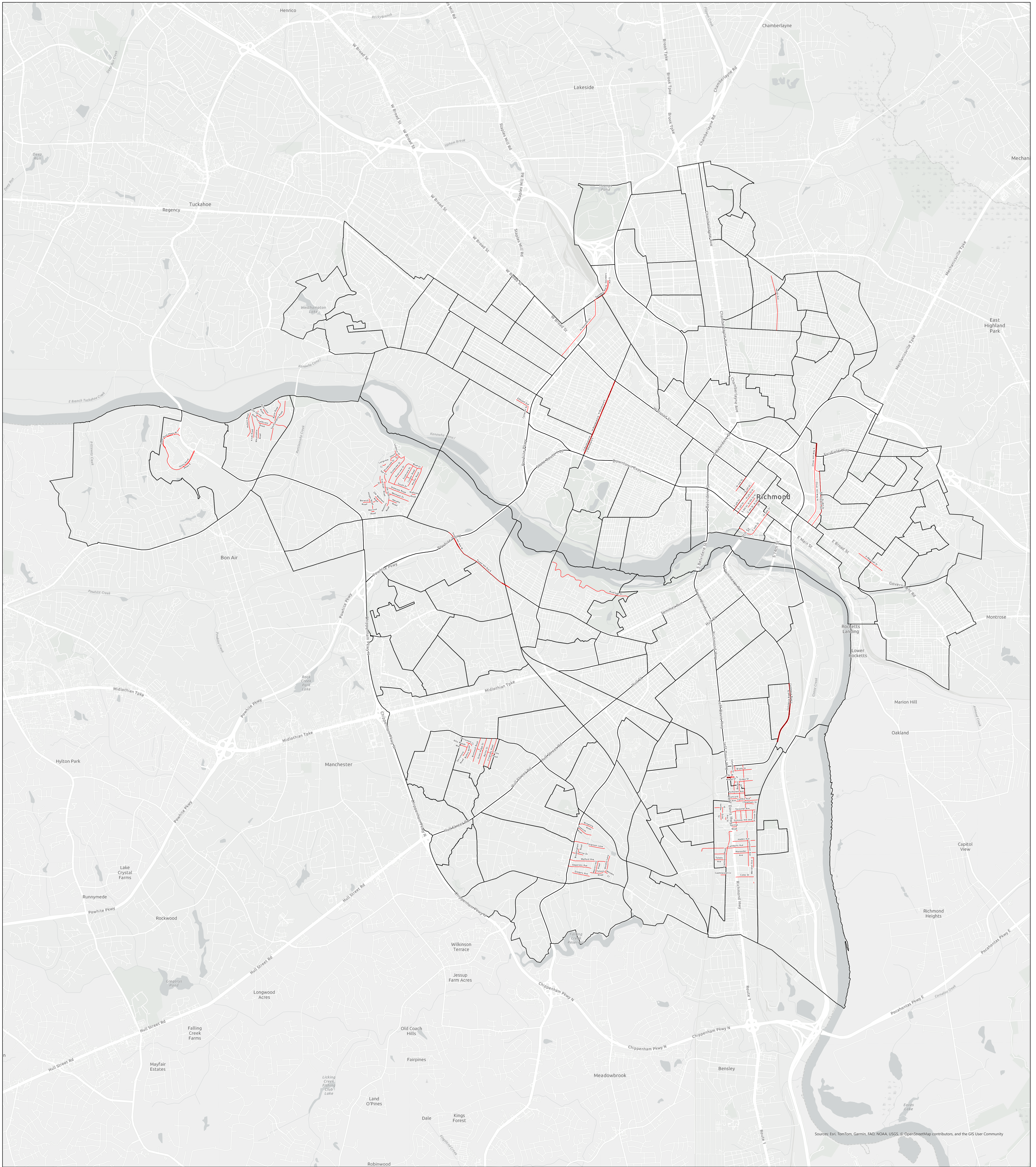
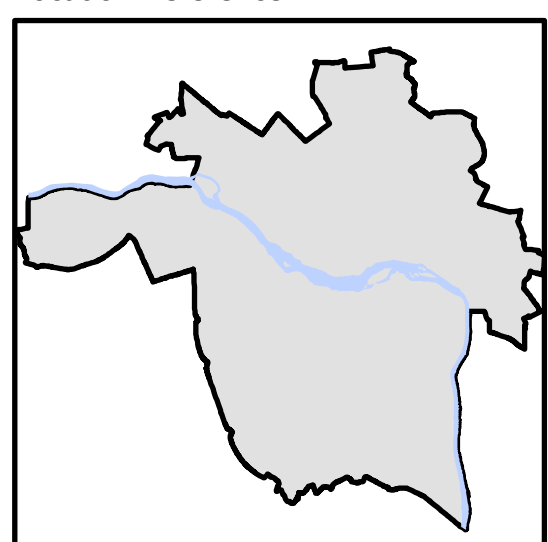


FY27 Paving Program (7/1/2027)



Source: Esri, TomTom, Garmin, FAO, NOAA, USGS, © OpenStreetMap contributors, and the GIS User Community

Location Reference



— Fiscal Year 2027 Paving
□ Neighborhoods



0 0.25 0.5 1 Miles
1 inch equals 2,296 feet

— Fiscal Year 2027 Paving
□ Neighborhoods



DEPARTMENT OF
PUBLIC WORKS



Disclaimer: The City of Richmond assumes no liability either for any errors, omissions, or inaccuracies in the information provided regardless of the cause of such or for any decision made, action taken, or action not taken by the user in reliance upon any maps or information provided herein.