



UTILITY TALK

May/June 2026

Natural Gas Wastewater Stormwater Water

Serving Richmond, Henrico and North Chesterfield

Celebrating Drinking Water Week (May 3 - 9)

For more than 40 years, National Drinking Water Week, led by the American Water Works Association, has recognized the essential role water plays in daily life. From the moment you turn on your tap, a complex system of infrastructure, treatment and testing is working to deliver safe, reliable drinking water to your home.

This week highlights the importance of clean water and the professionals who make it possible. It also serves as a reminder to appreciate and protect this vital resource.



INFRASTRUCTURE HIGHLIGHT: Byrd Park Reservoir Roof

The Byrd Park Reservoir, built in 1876, continues to play a critical role in delivering drinking water to Richmond. The reservoir was built with two adjacent identical tanks – known as the the west tank and the east tank. As part of ongoing improvements, DPU has completed replacement of the aging concrete roof on the west tank with a new aluminum roofing system designed for long-term durability and reliability. Replacement of the east tank's roof is planned to begin soon. Replacing a very large reservoir roof is a complex, multi-year process designed to maintain safe water service throughout construction. Here's a step by step of the process:

1. Taking the tank out of service

One side of the reservoir is temporarily removed from service so work can begin, while the other tank continues supplying water to customers.

2. Site preparation and dewatering

Crews install temporary systems to safely manage water levels and prepare the site for construction.

3. Demolition of the existing roof

The original concrete roof is carefully demolished and removed.

4. Structural construction

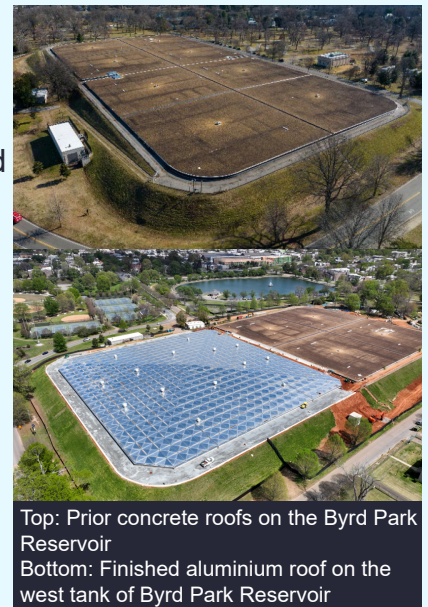
Crews build new concrete perimeter walls and column footer supports to carry the weight of the new roof system.

5. Installation of the aluminum roof

Pre-engineered columns and aluminum panels are installed, creating a lighter, more durable covering that helps protect water quality.

6. Testing and refilling

Once construction is complete, the tank is cleaned, disinfected and then slowly refilled. Water samples are collected and tested to ensure water quality standards are met before returning the tank to service.



Top: Prior concrete roofs on the Byrd Park Reservoir
Bottom: Finished aluminium roof on the west tank of Byrd Park Reservoir

Why Aluminum Roofs?

- ✓ Longer lifespan
- ✓ Improved protection
- ✓ Reduced maintenance
- ✓ Supports water quality

DID YOU KNOW?

Natural gas is odorless, but a substance called mercaptan is added to give it a strong sulfur-like odor. This helps detect leaks quickly. If you smell gas, leave the area immediately. Do not use electrical devices or phones. Call 911 from a safe location. Customers play an important role in safety. Awareness and quick action can help protect your home and community.

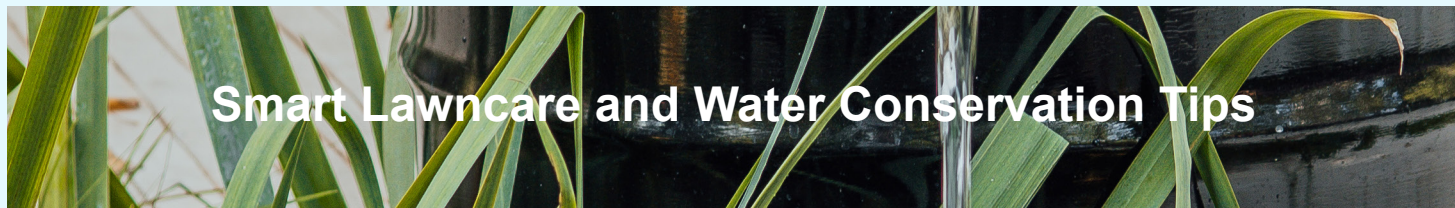
30901-I-0336



Consumer Confidence Report Available Now

Your annual Consumer Confidence Report is available. This report provides important information about your drinking water, including its source, detected contaminants and compliance with Environmental Protection Agency standards.

Required by the Safe Drinking Water Act, the report supports transparency and public health. Customers are encouraged to review the report by visiting www.rva.gov/public-utilities/news.



Smart Lawncare and Water Conservation Tips

As temperatures rise, outdoor water use can increase quickly, especially for lawn care. Small adjustments to your routine can make a big difference in conserving water while still maintaining a healthy yard. These following practices conserve water and can help lower your utility costs:



Raise your mower blade to promote deeper roots and retain moisture.



Install rain barrels to catch rainwater and reuse water for garden.



Regularly inspect hoses, connectors and irrigation systems for leaks.



Create a rain garden with native plants that use less water.



Use mulch around your yard to reduce water loss.



Water early in the morning to reduce evaporation.

Simple changes such as watering efficiently, raising your mower blade and using rain barrels can help save water and money. Choosing native or drought-tolerant plants can also improve soil absorption and reduce the amount of water that leaves your property. These simple practices support a more sustainable water supply, lower your utility costs and help ensure water is available when it is needed most.

Connect With Us

 @RichmondDPU

 (804) 646-4646

 @DPUStrreetNews

 richmondgasworks.com

 facebook.com/rvadpu/

 rva.gov/public-utilities