



Department of Public Utilities

Shockoe Trash Rake, Crest Gates and ASEG House Improvements

What has Happened so Far:

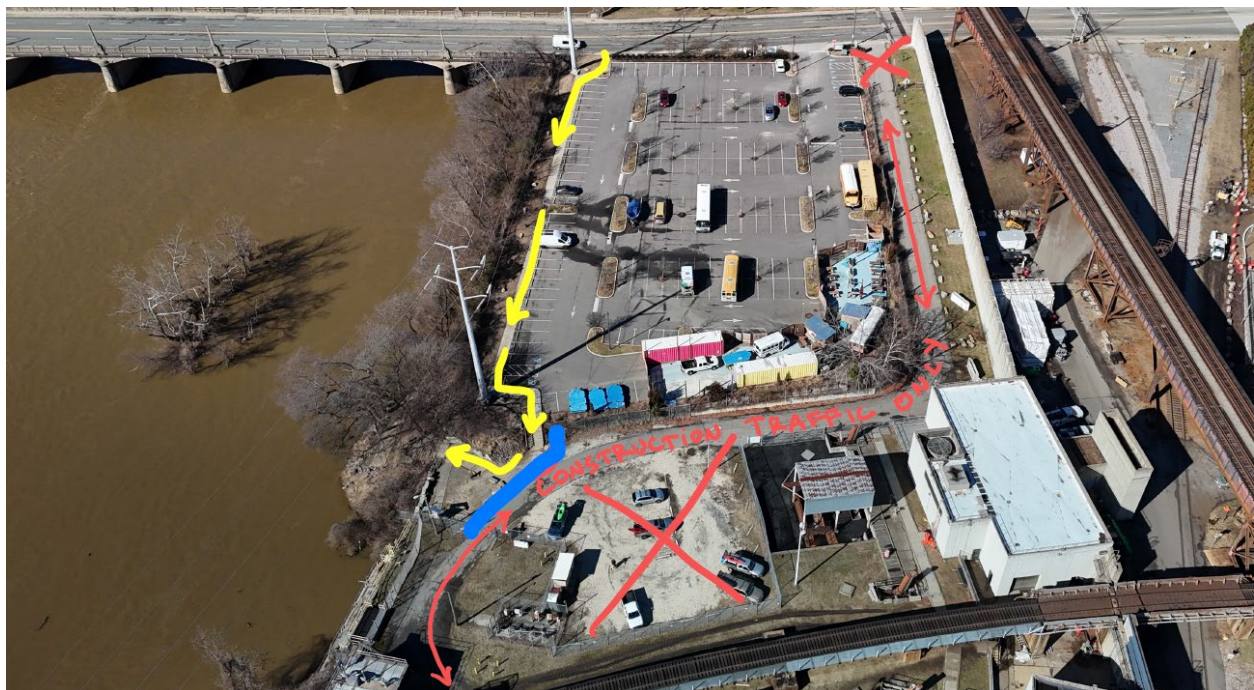
The Contractor has started rehabilitating the Arch Sewer Emergency Gate, installing new bar screens and trash rakes at the west diversion structure, and is preparing to replace the Box Sewer and Arch Sewer Crest Gate systems.

Upcoming Events:

The Contractor will be replacing the Arch Sewer Crest Gate at the Shockoe West Diversion Structure. **This will require the closure of the 14th Street Whitewater Takeout Parking Lot beginning May 27 for approximately six weeks** in order to set up a large crane to lift the old crest gate out and install the new gate. Due to the many trucks that will be required for equipment removal and staging, the access road to the 14th Street Whitewater Takeout Parking Lot will be open to construction traffic only. The 14th Street Whitewater Takeout will still be accessible from the southeast corner of the asphalt parking lot located at 325 S 14th Street. We do apologize in advance for the inconvenience.

At the completion of this phase of work, the Contractor will restore the parking lot to its original condition and the road and parking lot will be reopened to the public.

REMINDER: Please stay out of the construction area and off of the access road leading to/from the 14th Street Whitewater Takeout Parking Lot. There will be increased truck traffic in the area and heavy items being lifted and moved overhead.



Shockoe Trash Rake, Crest Gates and ASEG House Improvement

Frequently Asked Questions

What are the project details?

This project consists of replacing the existing bar screens and trash rake in the Shockoe West Diversion Structure, Arch Sewer Emergency Gate repairs, replacement of the Arch Sewer and Box Sewer Crest Gates and hydraulic systems, replacement of roller gate and drain gate actuators at the Shockoe Retention Basin, access modifications and concrete repair at various ancillary structures, and SCADA system improvements for the Shockoe Diversion Structures and Shockoe Retention Basin.

How will this project affect my sewer service, and how will I be notified?

Our goal is to minimize the impact on the public. If there are any impacts, we will notify neighbors and publish updates on our social media channels. No sewer service impacts are anticipated for the general public.

How long will the project take?

This project is scheduled to be completed by the end of 2025. The parking lot closure is for approximately six weeks and is scheduled to start no earlier than May 27 and it should be completed no later than July 8.

Will sidewalks be impacted?

No sidewalks will be impacted, but the access road to the 14th Street Whitewater Takeout will be closed to the public

How will traffic be affected?

There will be an increase in truck traffic in the area in order to deliver and haul off material and equipment.

How will parking be impacted?

Parking at the 14th Street Whitewater Takeout Parking Lot will be closed for the safety of citizens as well as construction personnel. Any areas of No Parking will be posted at least 48-hours in advance of the work being performed. Please observe and follow directions of "Road Closed" and "No Parking" signs around the work zones.

What will other impacts be?

There may be some noise as construction vehicles enter and exit the work zone. There will also be some noise during material and equipment loading and unloading.

If you have questions or comments about this project, please contact the Department of Public Utilities:

Kurt Weishaar, PE

Arcadis Senior Resident Engineer
(804) 646 -1400
kurt.weishaar@arcadis.com

Todd Loney, PE

DPU Capital Projects Manager
Department of Public Utilities
(804) 646-6964
Todd.Loney2@RVA.gov

Media Contact:

Rhonda Johnson

DPU Public Information Manager
(804) 646-5463
Rhonda.Johnson@RVA.gov