

# MONTHLY FINANCIAL SYNOPSES

FOR THE PERIOD ENDING ON JANUARY 31, 2025



**PREPARED BY THE DEPARTMENT OF FINANCE**

WITH ASSISTANCE FROM PARTNER AGENCIES

PRESENTED FEBRUARY 14, 2025

**LETTER OF TRANSMITTAL** ..... -i.-

**MAIN REPORT**

General Fund Revenues and Expenditures ..... -1.-  
    Procurement ..... -2.-  
Debt and Investment Management ..... -4.-  
    Accounts Payable ..... -6.-  
    Delinquent Taxes ..... -7.-  
    Economic Indicators ..... -8.-

**APPENDIX**

Appendix A: General Fund Revenues ..... -i.-  
Appendix B: General Fund Expenses ..... -iii.-  
Appendix C: General Fund Encumbrances ..... -iv.-

**IMAGE ATTRIBUTION:**

Cover Page: VisitRichmondVA.com (RVA Image Library)  
Encumbrance Page: Taber Andrew Bain (Wikimedia Commons)  
Debt & Investment Management Page: Richmond Region Tourism  
Accounts Payable Page: Morgan Riley (Wikimedia Commons)  
Delinquent Collections Page: Will Fisher (Flickr)

# LETTER OF TRANSMITTAL

**Friday, February 14, 2025**

The Administration is pleased to present the January Monthly Financial Synopses (MFS) pursuant to City Ordinances 2015-213-207 and 2018-100.

This MFS is intended to provide informative and relevant financial data to City Council. The report includes highlights of the City's financial condition as of January 31, 2025. This financial information includes comparative General Fund revenue and expenditures to date for the period ending on January 31, 2025 and 2024 as comparison to the full fiscal year budget.

It must be noted that the numbers contained in this MFS are unaudited. The MFS will be impacted by timing differences in receipts and payments from the prior fiscal year (PY). As a reminder, the City has a modified 45-day accrual period.

Figure 1 and Table 1 illustrates that as of January 31, 2025, General Fund revenues totaled \$457.4 million, or 42.0%, of the budgeted annual revenue.

Figure 1 and Table 2 indicate that as of January 31, 2025, General Fund expenditures totaled \$556.6 million, or 51.1%, of the budgeted annual expenditures.

Table 3 and Figure 2 provides a summary of encumbrances by area, totaling \$62.4 million.

Figure 3 shows a graphical depiction of the City-wide operating cash and investment balances on a month-to-month basis for fiscal years 2019 through the reporting period.

Figure 4 and Table 5 display the City's outstanding long term debt as of June 30 for the prior fiscal year (2024) as well as the debt related activity in fiscal year 2025 through the period ending January 31, 2025. Outstanding General Fund supported debt, including debt for school capital projects, remained the same during the period at an outstanding balance of approximately \$965.6 million. Similarly, City-wide debt remained the same during the period at an outstanding balance of approximately \$1.948 billion.

Figure 5 and Table 6 provide a snap-shot of accounts payable aging as of January 31, 2025.

Figure 6 and Table 7 provide the breakdown of delinquent tax figures.

Figures 7 through 9 and Table 8 highlight various economic indicators for the City of Richmond including unemployment statistics, new business licenses, and information on real estate development and transactions. Foreclosure data is no longer available.

We would like to thank all City agencies, departments, and staff for their assistance and cooperation in providing timely and accurate information in support of the preparation of these synopses.

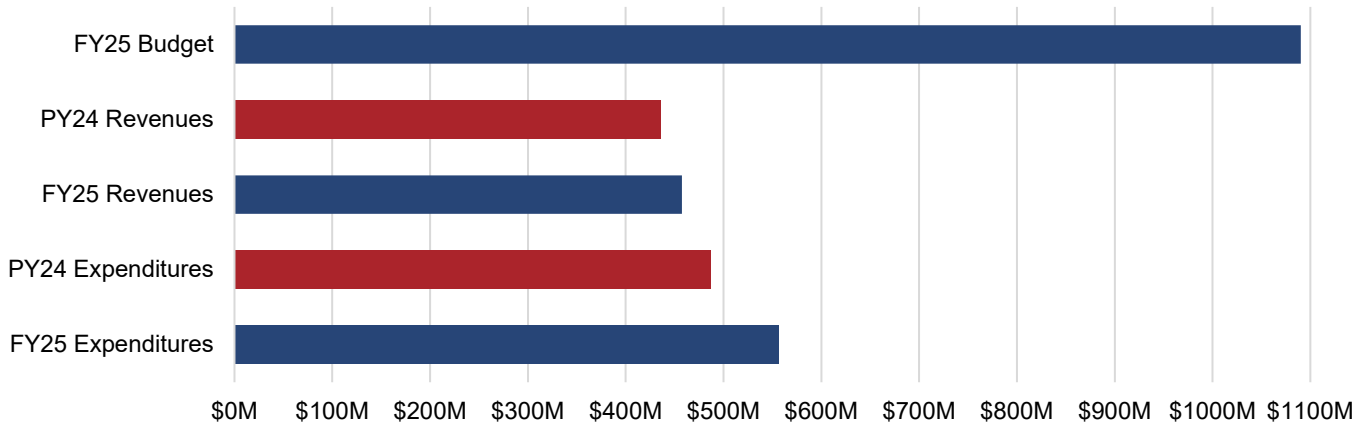
Sincerely,



**Sheila White, Director of Finance**

# GENERAL FUND REVENUES & EXPENDITURES

**FIGURE 1 - GENERAL FUND REVENUES VS. EXPENDITURES PY24-FY25 (YTD)**



**TABLE 1 - GENERAL FUND REVENUES**

Source	PY24 (YTD) Actual	FY25 (YTD) Actual	YTD FY25 - PY24 Variance	FY25 Modified Budget	% of FY25 Budget
Local Sources	\$ 367,585,686	\$ 385,884,022	\$ 18,298,335	\$ 878,438,621	43.9%
From the Commonwealth	\$ 54,847,482	\$ 58,278,402	\$ 3,430,920	\$ 100,900,994	57.8%
From the Federal Government	\$ 13,583,925	\$ 12,949,687	\$ (634,238)	\$ 23,581,291	54.9%
Utilities	\$ 110,420	\$ 297,165	\$ 186,745	\$ 5,500	5403.0%
<b>Subtotal General Fund Revenues</b>	<b>436,127,513</b>	<b>457,409,275</b>	<b>21,281,763</b>	<b>1,002,926,406</b>	<b>45.6%</b>
Encumbrance Reserve (Including ARPA)	\$ -	\$ -	\$ -	\$ 58,367,426	0.0%
Transfers In	\$ -	\$ -	\$ -	\$ 28,862,263	0.0%
<b>Grand Total General Fund Revenues</b>	<b>\$ 436,127,513</b>	<b>\$ 457,409,275</b>	<b>\$ 21,281,763</b>	<b>\$ 1,090,156,095</b>	<b>42.0%</b>

**TABLE 2 - GENERAL FUND EXPENDITURES**

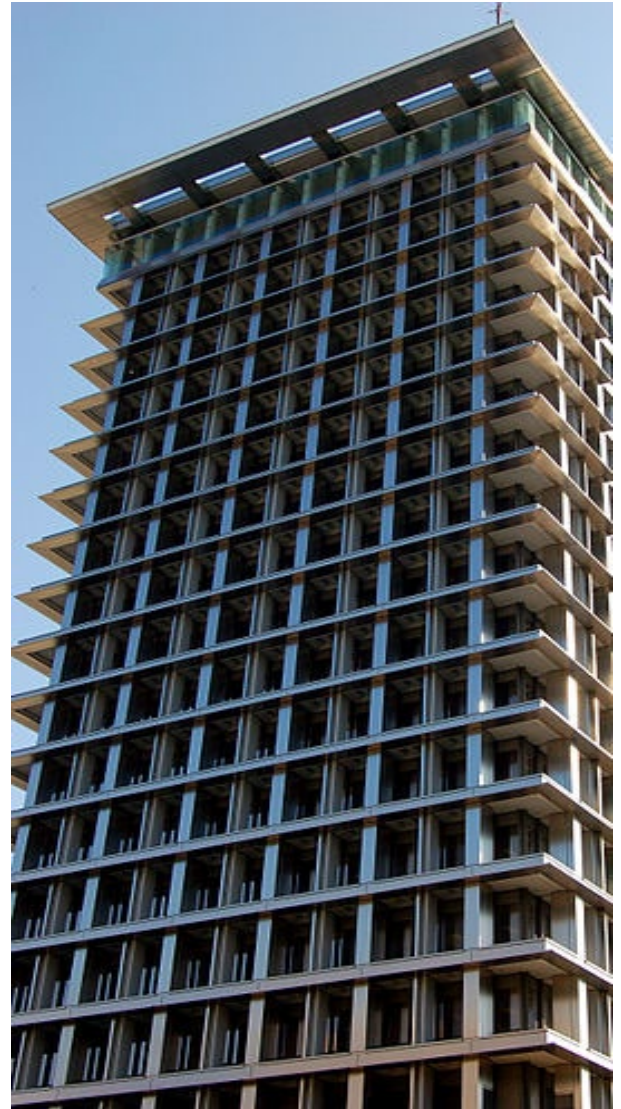
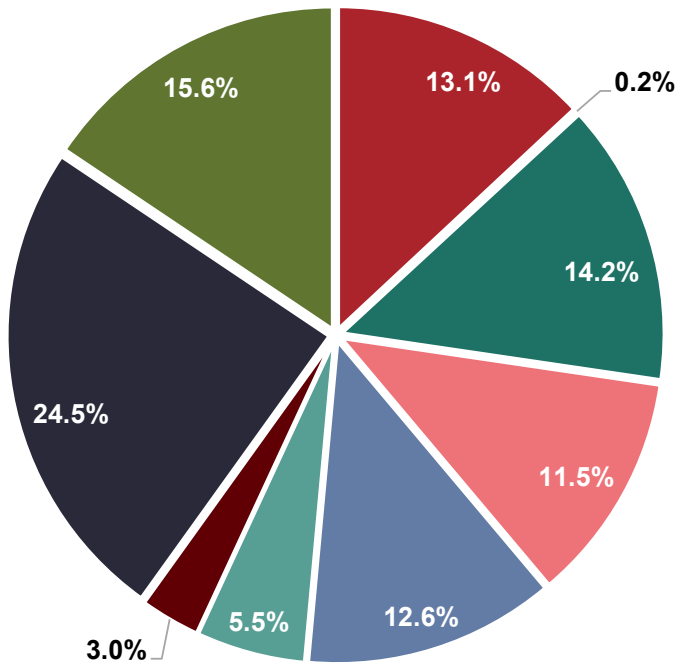
Source	PY24 (YTD) Actual	FY25 (YTD) Actual	YTD FY25 - PY24 Variance	FY25 Modified Budget	% of FY25 Budget
General Government	\$ 29,547,160	\$ 42,200,984	\$ 12,653,824	\$ 86,615,039	48.7%
Judicial	\$ 548,823	\$ 674,688	\$ 125,865	\$ 1,309,344	51.5%
Constitutionals	\$ 34,210,313	\$ 38,300,675	\$ 4,090,363	\$ 70,433,842	54.4%
Public Safety	\$ 111,891,807	\$ 121,814,173	\$ 9,922,366	\$ 204,537,112	59.6%
Operations	\$ 22,421,834	\$ 24,319,145	\$ 1,897,311	\$ 56,550,659	43.0%
Health & Welfare	\$ 37,152,595	\$ 45,742,133	\$ 8,589,539	\$ 95,797,224	47.7%
Education	\$ 110,730,056	\$ 119,640,396	\$ 8,910,340	\$ 239,280,792	50.0%
Recreation & Culture	\$ 18,519,927	\$ 23,786,663	\$ 5,266,736	\$ 39,200,592	60.7%
Community Development	\$ 12,812,317	\$ 16,314,257	\$ 3,501,940	\$ 45,082,857	36.2%
Other Public Services/Non-Departmental	\$ 109,512,380	\$ 123,802,535	\$ 14,290,155	\$ 251,348,635	49.3%
<b>Grand Total General Fund Expenditures</b>	<b>\$ 487,347,211</b>	<b>\$ 556,595,650</b>	<b>\$ 69,248,438</b>	<b>\$ 1,090,156,095</b>	<b>51.1%</b>



# PROCUREMENT ENCUMBRANCES

**TABLE 3, FIGURE 2 - FY25 GENERAL FUND ENCUMBRANCES**

General Fund Encumbrance Source	Encumbrance Commitment
General Government	\$ 8,146,563
Judicial	59,985
Constitutionals	8,844,265
Public Safety	7,202,519
Operations	7,857,777
Health & Welfare	3,410,521
Recreation & Cultural	1,872,378
Community Development	15,281,071
Non-Departmental/Other Public Services	9,734,346
<b>Grand Total General Fund Encumbrances</b>	<b>\$ 62,409,425</b>



In adherence to Ordinance No. 2015-102; the Director of Procurement Services shall prepare and submit to the City Council, the Mayor, and the Chief Executive Officer a monthly written report identifying all existing contracts procured under City Code §21-68, that, since the last such report, have been:

- (1) modified via change order or contract modification;
- (2) renewed or extended;
- (3) resolicited.

These contracts are identified on the following page.

In adherence to Ordinance No. 2015-102-202; there are no known efficiencies achieved in the procurement of architectural and professional engineering services as a result of the adoption of this ordinance over the year preceding the submission of the report.

# PROCUREMENT CONTRACTS

**TABLE 4 - CONTRACTS UPDATED IN JANUARY-FY25**

Existing Contract Number	Title	Total Contract Amount	Contractor Name	Agency	Agency Contract Administrator	Type	Comments
No changes/additions for the month of January.							

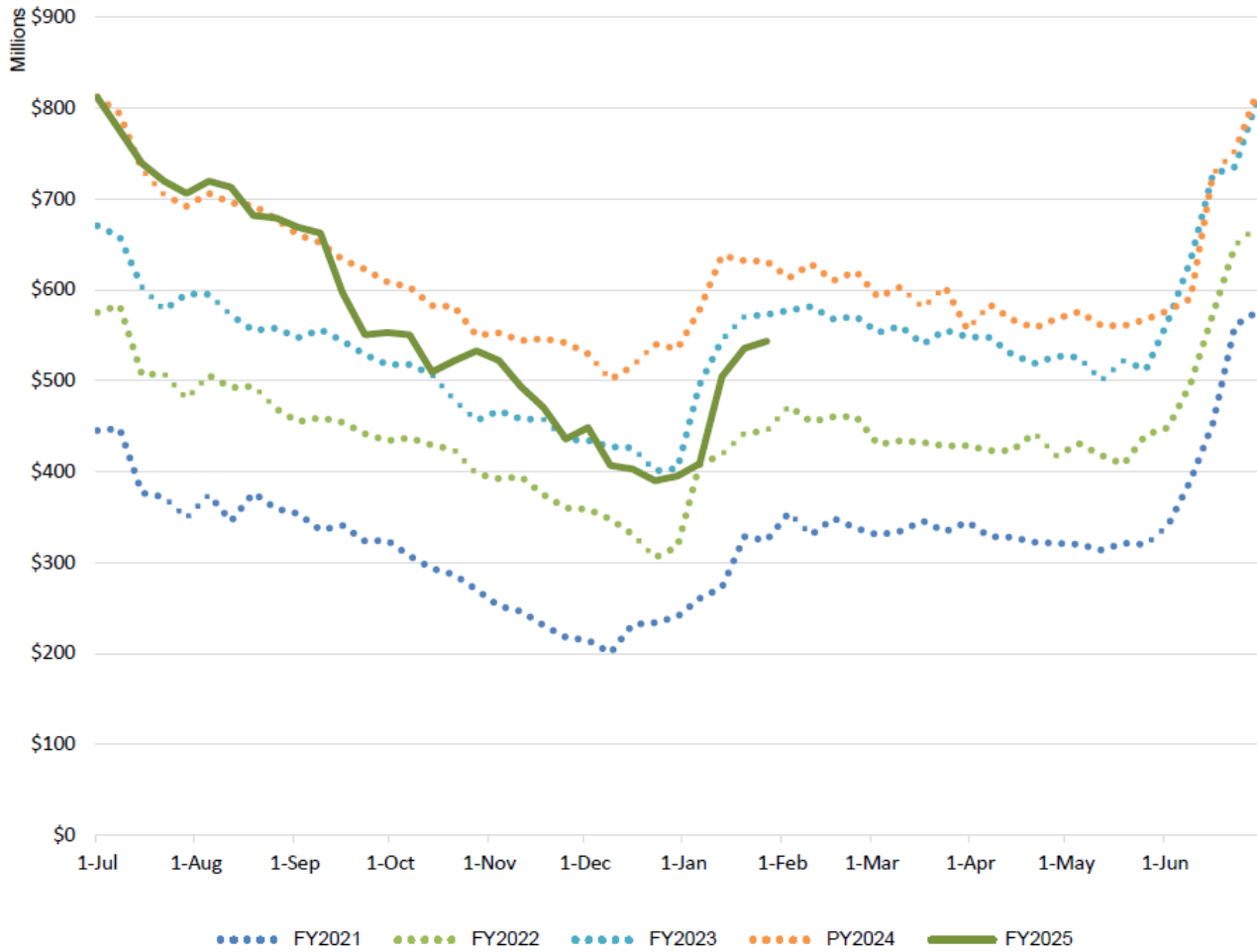
In adherence to Ordinance No. 2015-102; the Director of Procurement Services shall prepare and submit to the City Council, the Mayor, and the Chief Executive Officer a monthly written report identifying all existing contracts procured under City Code §21-68 (formerly §74-72), that, since the last such report, have been:

- (1) modified via change order or contract modification;
- (2) renewed or extended;
- (3) resolicited.

These contracts are identified on the following page. A list of reportable procurement actions for January 2025 are listed above.

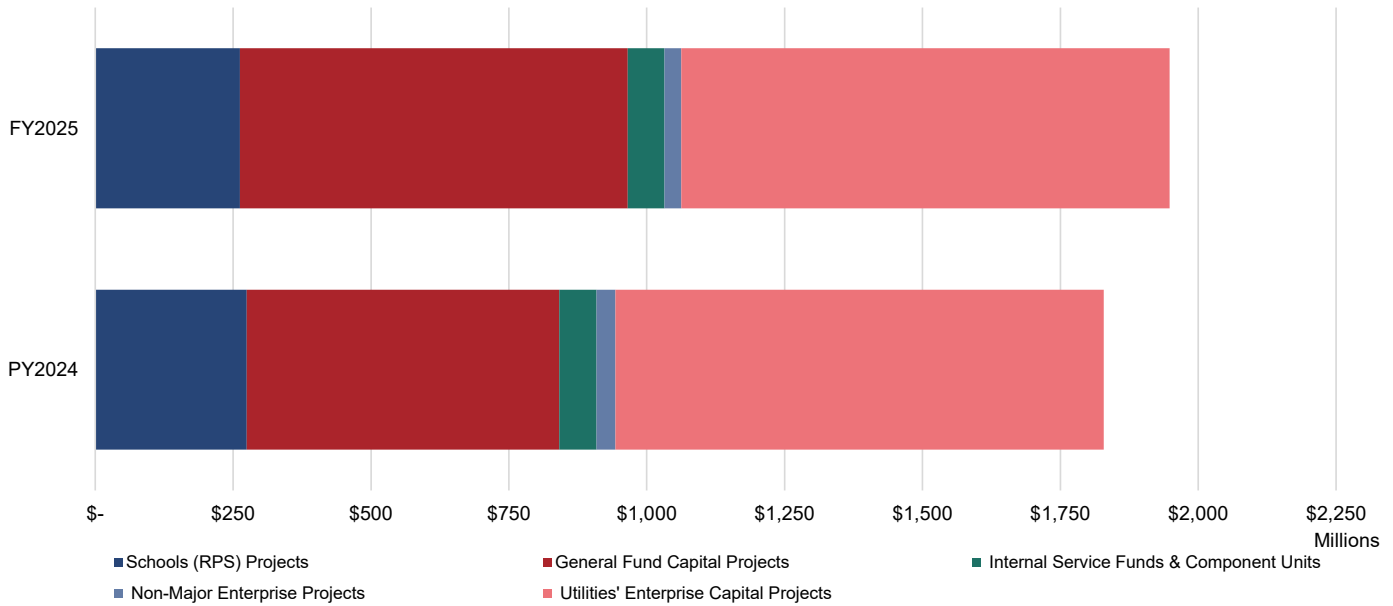
# INVESTMENT & DEBT MANAGEMENT

**FIGURE 3 - OPERATING CASH & INVESTMENT BALANCES**  
AS OF JANUARY 31, 2025



# INVESTMENT & DEBT MANAGEMENT

FIGURE 4, TABLE 5 - OUTSTANDING LONG TERM DEBT

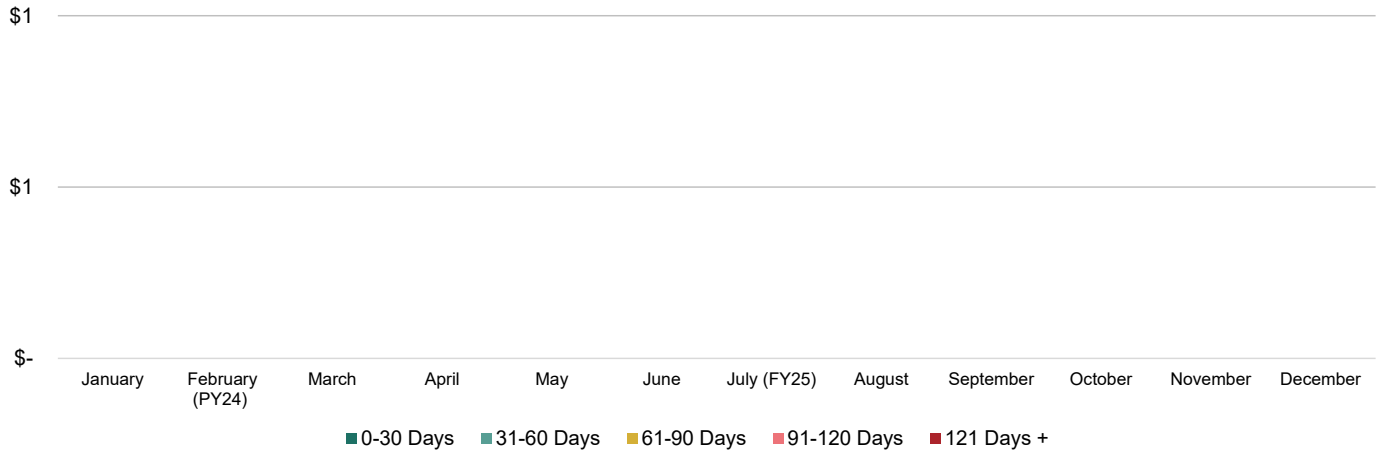


	PY2024		FY2025		Debt Outstanding January 31, 2024
	Debt Outstanding June 30, 2024	Payments of Principal	New Debt Issued	Refunded Debt	
<b>Paid from General Fund</b>					
Schools Capital Projects - GO Bonds	\$ 274,710,720	\$ 12,385,984	\$ -	\$ -	\$ 262,324,736
New Schools - Line of Credit BAN	-	-	-	-	-
General Government Projects-CIP	335,130,811	12,166,249	-	-	322,964,562
Justice Center Project	64,289,350	790,082	-	-	63,499,268
Carpenter Center Project	9,402,835	1,431,661	-	-	7,971,174
Transportation Infrastructure	118,440,071	4,919,445	-	-	113,520,626
Diamond District - Stadium Bonds (Phase I)	-	-	129,725,000	-	129,725,000
City CIP Projects-Line of Credit BAN	39,600,000	-	26,000,000	-	65,600,000
<i>Subtotal General Fund</i>	<i>841,573,786</i>	<i>31,693,421</i>	<i>155,725,000</i>	<i>-</i>	<i>965,605,365</i>
<b>Paid From Component Units &amp; ISF</b>					
Diamond District - EDA Infrastructure	33,745,000	-	-	-	33,745,000
Fleet Internal Service Fund	8,313,640	-	-	-	8,313,640
EDA - Stone Brewery Project	17,635,000	-	-	-	17,635,000
HUD Section 108 Notes	7,715,000	725,000	-	-	6,990,000
<i>Subtotal Component Units &amp; Internal Service Funds (ISF)</i>	<i>67,408,640</i>	<i>725,000</i>	<i>-</i>	<i>-</i>	<i>66,683,640</i>
<b>Paid From Non-Major Enterprise Funds</b>					
Non-Major Enterprise Fund - GO Bonds & Notes	34,151,640	3,700,000	-	-	30,451,640
<i>Subtotal Non-Major Enterprise Fund</i>	<i>34,151,640</i>	<i>3,700,000</i>	<i>-</i>	<i>-</i>	<i>30,451,640</i>
<b>Paid From Utility Enterprise Fund</b>					
Utilities - GO Bonds & Notes	70,473,722	282,766	-	-	70,190,956
Utilities - Revenue Bonds	814,998,328	5,113	-	-	814,993,215
<i>Subtotal Utilities' Enterprise Funds</i>	<i>885,472,051</i>	<i>287,880</i>	<i>-</i>	<i>-</i>	<i>885,184,171</i>
<b>Total Debt of the City</b>	<b>\$ 1,828,606,117</b>	<b>\$ 36,406,301</b>	<b>\$ 155,725,000</b>	<b>\$ -</b>	<b>\$ 1,947,924,816</b>

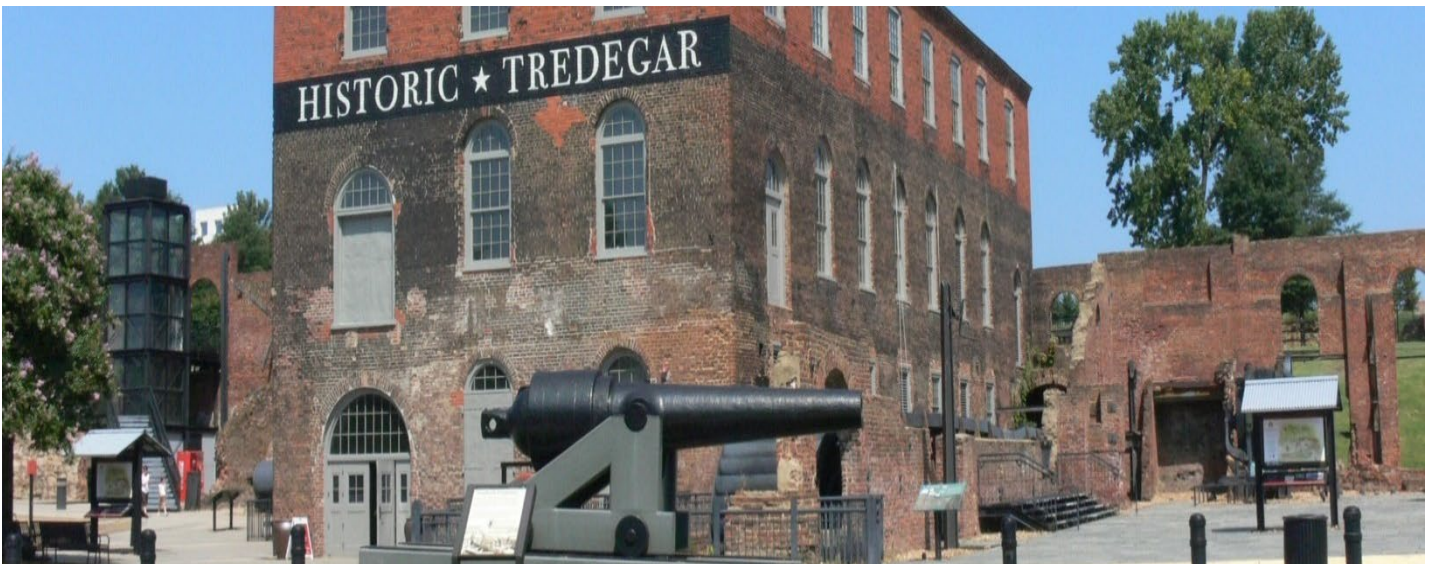


# ACCOUNTS PAYABLE

FIGURE 5, TABLE 6 - ACCOUNTS PAYABLE AGING REPORT



Month	0-30 Days	31-60 Days	61-90 Days	91-120 Days	121 Days +	Total
January	\$ -	\$ -	\$ -	\$ -	\$ -	\$ -
February (PY24)	\$ -	\$ -	\$ -	\$ -	\$ -	\$ -
March	\$ -	\$ -	\$ -	\$ -	\$ -	\$ -
April	\$ -	\$ -	\$ -	\$ -	\$ -	\$ -
May	\$ -	\$ -	\$ -	\$ -	\$ -	\$ -
June	\$ -	\$ -	\$ -	\$ -	\$ -	\$ -
July (FY25)	\$ -	\$ -	\$ -	\$ -	\$ -	\$ -
August	\$ -	\$ -	\$ -	\$ -	\$ -	\$ -
September	\$ -	\$ -	\$ -	\$ -	\$ -	\$ -
October	\$ -	\$ -	\$ -	\$ -	\$ -	\$ -
November	\$ -	\$ -	\$ -	\$ -	\$ -	\$ -
December	\$ -	\$ -	\$ -	\$ -	\$ -	\$ -



# DELINQUENT TAXES

**FIGURE 6, TABLE 7 - OUTSTANDING DELINQUENT TAXES**



	PY24 YTD Amount	FY25 YTD Amount
Delinquent Real Estate Taxes	\$ 12,828,814	\$ 29,520,824
Special Assessments Against Real Estate (1)	56,731	63,691
Delinquent Personal Property Taxes (2)	N/A	N/A
Delinquent Business License Taxes (3)	14,315,947	13,605,561
<b>Total</b>	<b>\$ 27,201,492</b>	<b>\$ 43,190,076</b>

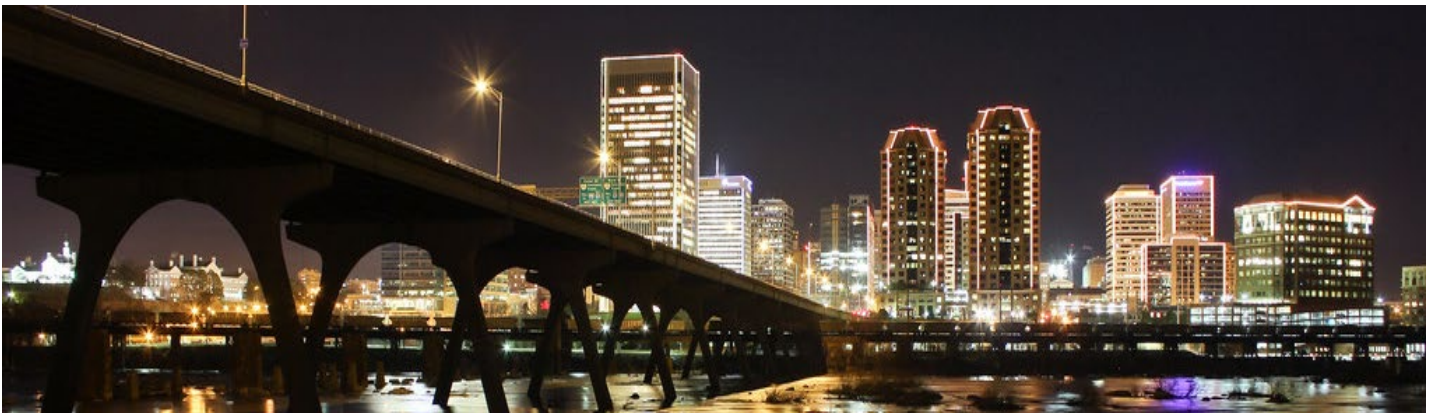
**Notes:**

(1) Special Assessments Against Real Estate are additional charges billed to property owners because the property has not been kept up to code. Liens can be for the following:

- Weed Clearance: Cutting grass/yard work;
- Refuse Clearance: Cleaning property of trash or other miscellaneous items;
- Boarding: Covering broken doors and windows to deter entry;
- Partial Demolition: Partial removal of structure on property;
- Full Demolition: Complete removal of structure on property;

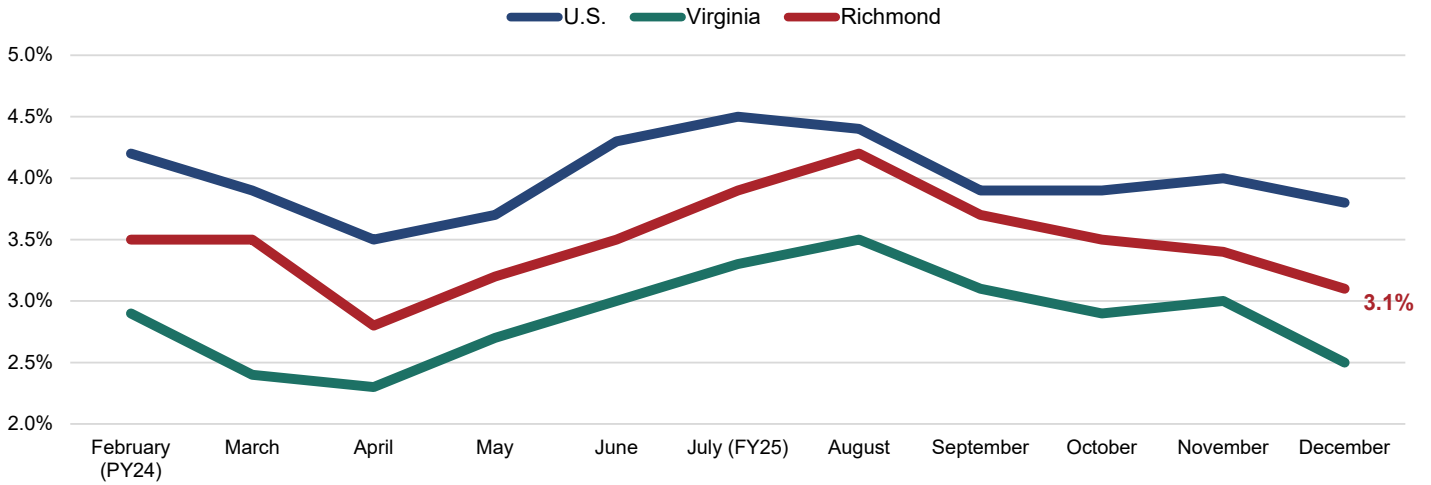
(2) Data for Delinquent Personal Property Taxes is currently under review. For the most recent FY25 data, please refer to the Monthly Financial Synopsis for the month of December;

(3) Includes Admissions, Lodging, and Meals (ALM) tax categories in addition to BPOL.



# ECONOMIC INDICATORS

**FIGURE 7 - UNEMPLOYMENT**



- The local unemployment rate decreased to 3.1% for the month of December.

**Note:** The unemployment rate only counts those who: 1) Do not have a job; 2) have looked for work in the prior 4 weeks and are currently available for work. Individuals who have not submitted resumes, contacted potential employers, placed job advertisements, etc. in the last 4 weeks are not included as unemployed. Those individuals are instead excluded from the labor force. Discrepancies between the unemployment statistics presented in this monthly synopsis versus historical reports can be attested to the recent standardization of reporting to the Virginia Unemployment Local Area Unemployment Statistics (LAUS) database.

**TABLE 8 - NEW BUSINESS LICENSES**

New Business Licenses	Total Value	Average Value per License
127	\$435,859	\$3,431.96

**FIGURES 8 & 9 - VALUE OF NEW CONSTRUCTION/RESIDENTIAL SALES**

Value of New Construction & Residential Sales (Figures 8 & 9) data is not available for the reported month. For the most recent data for FY25, please see the Monthly Financial Synopsis for the month of September.”

**CITY OF RICHMOND, VIRGINIA**  
**APPENDIX A - BUDGETARY COMPARISON SCHEDULE GENERAL FUND REVENUES**  
**FOR THE MONTH ENDING ON JANUARY 31, 2025 (UNAUDITED)**

	PY24 (YTD) Actual	FY25 (YTD) Actual	YTD FY25 - PY24 Variance	FY25 Budget (Operating)	% of FY25 Budget
<b>Revenue from Local Sources</b>					
<b>General Property Taxes</b>					
Machinery & Tools Taxes	434,305	47,365	(386,940)	15,608,065	0.3%
Penalties and Interest- Interest	1,374,525	1,126,315	(248,210)	3,771,800	29.9%
Penalties and Interest- Penalty	1,320,228	1,563,852	243,624	2,776,042	56.3%
Personal Property Taxes- Current	(200,475)	4,279,585	4,480,060	43,921,839	9.7%
Personal Property Taxes- Delinquent	4,458,802	154,247	(4,304,555)	9,890,886	1.6%
PSC - Personal Property Current	-	3,646,648	3,646,648	9,144,891	39.9%
PSC - Personal Property Delinquent	2,425,102	-	(2,425,102)	1,163,553	0.0%
PSC - Real Property Current	165,026	1,885,561	1,720,534	2,325,740	81.1%
Real Property Taxes- Current	211,689,077	232,077,983	20,388,906	472,948,803	49.1%
Real Property Taxes- Delinquent	8,855,411	1,746,722	(7,108,689)	13,573,175	12.9%
<b>Total General Property Taxes</b>	<b>\$ 230,522,002</b>	<b>\$ 246,528,278</b>	<b>\$ 16,006,276</b>	<b>\$ 575,124,794</b>	<b>42.9%</b>
<b>Other Local Taxes</b>					
Admission Taxes	1,725,939	1,248,306	(477,634)	3,540,500	35.3%
Bank Stock Taxes	31,397	135,107	103,710	11,000,000	1.2%
Business Licenses Taxes	1,146,162	1,629,205	483,043	43,271,932	3.8%
Cigarette Tax	1,104,637	939,760	(164,877)	1,670,000	56.3%
Consumer Utility Taxes	8,721,686	9,656,517	934,831	19,134,500	50.5%
Local Sales & Use Tax	30,382,056	30,554,722	172,666	54,290,500	56.3%
Motor Vehicle Licenses	1,025,912	808,798	(217,114)	8,403,000	9.6%
Other Local Taxes	149,066	148,195	(871)	2,300,000	6.4%
Prepared Food Taxes	21,315,176	23,184,454	1,869,278	45,514,445	50.9%
Prepared Food Taxes - School Facilities	5,429,085	5,905,200	476,115	11,592,763	50.9%
Short-Term Rental Tax	83,362	184,656	101,294	109,867	168.1%
Transient Lodging Taxes	7,802,599	5,329,892	(2,472,707)	8,450,000	63.1%
<b>Total Other Local Taxes</b>	<b>\$ 78,917,078</b>	<b>\$ 79,724,812</b>	<b>\$ 807,735</b>	<b>\$ 209,277,507</b>	<b>38.1%</b>
<b>Permits, Privilege Fees, and Regulatory Licenses</b>					
Animal Licenses	94,119	90,737	(3,382)	-	N/A
Permits and Other Licenses	9,412,576	12,070,374	2,657,797	17,824,827	67.7%
<b>Total Permits, Privilege Fees, and Regulatory Licenses</b>	<b>\$ 9,506,696</b>	<b>\$ 12,161,111</b>	<b>\$ 2,654,415</b>	<b>\$ 17,824,827</b>	<b>68.2%</b>
<b>Fines &amp; Forfeitures</b>					
Fines & Forfeitures	2,999	4,416	1,417	8,000	55.2%
<b>Total Fines &amp; Forfeitures</b>	<b>\$ 2,999</b>	<b>\$ 4,416</b>	<b>\$ 1,417</b>	<b>\$ 8,000</b>	<b>55.2%</b>
<b>Revenue from Use of Money and Property</b>					
Revenue from Use of Money	9,704,060	5,357,663	(4,346,397)	15,000,000	35.7%
Revenue from Use of Property	654,140	76,707	(577,432)	2,758,790	2.8%
<b>Total Revenue from Use of Money and Property</b>	<b>\$ 10,358,199</b>	<b>\$ 5,434,370</b>	<b>\$ (4,923,829)</b>	<b>\$ 17,758,790</b>	<b>30.6%</b>
<b>Charges for Services</b>					
Finance	139,345	46,843	(92,503)	834,985	5.6%
Fire and Rescue Services	42,667	67,086	24,419	165,000	40.7%
Planning and Community Development	-	-	-	4,000	0.0%
Law Enforcement and Traffic Control	185,131	81,901	(103,230)	936,000	8.8%
Library	10,035	10,445	410	8,092	129.1%
Maintenance of Transportation	975	500	(475)	-	N/A
Other Protection	93,199	90,737	(2,461)	125,000	72.6%
Parks and Recreation	192,013	303,363	111,349	414,500	73.2%
Information Technology	64,435	14,285	(50,150)	9,331	153.1%
Sanitation and Waste Removal	11,460,111	11,303,161	(156,950)	19,647,033	57.5%
Court Costs	3,544,308	4,272,365	728,056	6,061,972	70.5%
Other	6,285	449	(5,837)	32,704	1.4%
<b>Total Charges for Services</b>	<b>\$ 15,738,505</b>	<b>\$ 16,191,134</b>	<b>\$ 452,629</b>	<b>\$ 28,238,617</b>	<b>57.3%</b>
<b>Miscellaneous Revenue</b>					
Miscellaneous	2,282,578	5,160,021	2,877,443	4,406,079	117.1%
PILOT from Enterprise Activities	18,569,590	18,917,496	347,906	21,954,066	86.2%
<b>Total Miscellaneous Revenue</b>	<b>\$ 20,852,168</b>	<b>\$ 24,077,517</b>	<b>\$ 3,225,349</b>	<b>\$ 26,360,145</b>	<b>91.3%</b>
<b>Recovered Costs</b>					
Recovered Costs	1,688,039	1,762,383	74,344	3,845,941	45.8%
<b>Total Recovered Costs</b>	<b>\$ 1,688,039</b>	<b>\$ 1,762,383</b>	<b>\$ 74,344</b>	<b>\$ 3,845,941</b>	<b>45.8%</b>
<b>Revenue from Local Sources Total</b>	<b>\$ 367,585,686</b>	<b>\$ 385,884,022</b>	<b>\$ 18,298,335</b>	<b>\$ 878,438,621</b>	<b>43.9%</b>

**CITY OF RICHMOND, VIRGINIA**  
**APPENDIX A - BUDGETARY COMPARISON SCHEDULE GENERAL FUND REVENUES**  
**FOR THE MONTH ENDING ON JANUARY 31, 2025 (UNAUDITED)**

	PY24 (YTD) Actual	FY25 (YTD) Actual	YTD FY25 - PY24 Variance	FY25 Budget (Operating)	% of FY25 Budget
<b>Revenue from the Commonwealth</b>					
<b>Non-Categorical Aid</b>					
Auto Rental Tax	728,002	752,420	24,419	1,190,000	63.2%
Communications Sales and Use Tax	6,447,974	5,402,122	(1,045,852)	10,411,000	51.9%
Miscellaneous Non-Categorical Aid	1,302,488	1,485,904	183,415	440,000	337.7%
Mobile Home Titling Taxes	-	-	-	7,850	0.0%
Personal Property Tax Reimbursement	16,708,749	16,708,749	-	16,708,749	100.0%
Rolling Stock Tax	145,242	158,102	12,860	135,000	117.1%
Tax on Deeds	-	-	-	-	N/A
<b>Total Non-Categorical Aid</b>	<b>\$ 25,332,455</b>	<b>\$ 24,507,297</b>	<b>\$ (825,157)</b>	<b>\$ 28,892,599</b>	<b>84.8%</b>
<b>Shared Expenditures (Categorical Aid)</b>					
City Treasurer	89,615	113,343	23,728	195,700	57.9%
Commonwealth Attorney	1,931,868	2,724,753	792,885	4,758,098	57.3%
Finance	492,374	608,057	115,684	937,300	64.9%
General Registrar	-	-	-	158,005	0.0%
Sheriff	6,663,886	9,532,569	2,868,683	20,729,000	46.0%
Welfare and Social Services	-	-	-	-	N/A
<b>Total Shared Expenditures (Categorical Aid)</b>	<b>\$ 9,177,743</b>	<b>\$ 12,978,723</b>	<b>\$ 3,800,979</b>	<b>\$ 26,778,103</b>	<b>48.5%</b>
<b>Categorical Aid</b>					
Education	-	-	-	-	N/A
Library	205,672	224,597	18,925	278,809	80.6%
Public Safety	11,317,642	11,491,473	173,831	21,050,056	54.6%
Public Works	-	-	-	-	N/A
Welfare and Social Services	8,201,284	8,616,628	415,344	19,931,556	43.2%
<b>Total Categorical Aid</b>	<b>\$ 19,724,598</b>	<b>\$ 20,332,698</b>	<b>\$ 608,100</b>	<b>\$ 41,260,421</b>	<b>49.3%</b>
<b>PILOT (Payments in Lieu of Taxes)</b>					
Service Charges	612,686	459,684	(153,002)	3,969,871	11.6%
<b>Total PILOT (Payments in Lieu of Taxes)</b>	<b>\$ 612,686</b>	<b>\$ 459,684</b>	<b>\$ (153,002)</b>	<b>\$ 3,969,871</b>	<b>11.6%</b>
<b>Revenue from the Commonwealth Total</b>	<b>\$ 54,847,482</b>	<b>\$ 58,278,402</b>	<b>\$ 3,430,920</b>	<b>\$ 100,900,994</b>	<b>57.8%</b>
<b>Revenue from the Federal Government</b>					
<b>Non-Categorical Aid</b>					
Other Federal Revenue	-	-	-	-	N/A
<b>Total Non-Categorical Aid</b>	<b>\$ -</b>	<b>\$ -</b>	<b>\$ -</b>	<b>\$ -</b>	<b>N/A</b>
<b>Categorical Aid</b>					
Social Services	13,583,925	12,949,687	(634,238)	23,581,291	54.9%
<b>Total Categorical Aid</b>	<b>\$ 13,583,925</b>	<b>\$ 12,949,687</b>	<b>\$ (634,238)</b>	<b>\$ 23,581,291</b>	<b>54.9%</b>
<b>Revenue from the Federal Government Total</b>	<b>\$ 13,583,925</b>	<b>\$ 12,949,687</b>	<b>\$ (634,238)</b>	<b>\$ 23,581,291</b>	<b>54.9%</b>
<b>Utilities</b>					
Utilities	110,420	297,165	186,745	5,500	5403.0%
<b>Total Utilities</b>	<b>\$ 110,420</b>	<b>\$ 297,165</b>	<b>\$ 186,745</b>	<b>\$ 5,500</b>	<b>5403.0%</b>
<b>Revenue from Utilities Total</b>	<b>\$ 110,420</b>	<b>\$ 297,165</b>	<b>\$ 186,745</b>	<b>\$ 5,500</b>	<b>5403.0%</b>
<b>Transfers-In</b>					
<b>Transfers-In</b>					
Transfers-In	-	-	-	28,862,263	0.0%
<b>Total Transfers-In</b>	<b>\$ -</b>	<b>\$ -</b>	<b>\$ -</b>	<b>\$ 28,862,263</b>	<b>0.0%</b>
<b>Total Transfers-In</b>	<b>\$ -</b>	<b>\$ -</b>	<b>\$ -</b>	<b>\$ 28,862,263</b>	<b>0.0%</b>
<b>General Fund Revenue Grand Total:</b>	<b>\$ 436,127,513</b>	<b>\$ 457,409,275</b>	<b>\$ 21,281,763</b>	<b>\$ 1,090,156,095</b>	<b>42.0%</b>



**CITY OF RICHMOND, VIRGINIA**  
**APPENDIX B - BUDGETARY COMPARISON SCHEDULE GENERAL FUND EXPENDITURES**  
**FOR THE MONTH ENDING ON JANUARY 31, 2025 (UNAUDITED)**

	PY24 YTD Actual	FY25 YTD Actual	FY25 YTD - PY24 Variance	FY25 Budget (Operating)	FY25 % of Budget
<b>General Government</b>					
Budget and Strategic Planning	1,164,949	1,252,028	87,079	2,623,120	47.7%
Chief Administrative Office	1,566,950	2,177,685	610,735	3,393,696	64.2%
Citizen Service & Response	1,288,380	1,694,393	406,013	3,515,803	48.2%
City Assessor	2,736,048	3,495,177	759,128	5,801,514	60.2%
City Attorney	3,135,868	3,752,250	616,382	7,154,252	52.4%
City Auditor	1,327,708	1,329,031	1,323	2,594,140	51.2%
City Clerk	649,941	682,230	32,290	1,463,094	46.6%
City Council	930,816	1,132,042	201,227	2,429,295	46.6%
Council Chief of Staff	910,547	1,209,279	298,732	2,884,324	41.9%
Finance	7,855,644	14,621,732	6,766,088	27,465,940	53.2%
Human Resources	3,342,801	4,700,712	1,357,910	15,332,812	30.7%
Inspector General	432,052	642,127	210,074	1,339,145	48.0%
Mayor's Office	868,105	956,565	88,459	1,719,646	55.6%
Minority Business Development	547,641	598,632	50,991	1,194,268	50.1%
Office of Intergovernmental Affairs	112,049	316,689	204,640	668,069	47.4%
Office of Strategic Communications & Civic Engagemen	1,345,659	1,500,888	155,229	3,202,161	46.9%
Procurement Services	1,332,000	2,139,525	807,525	3,833,759	55.8%
<b>General Government Subtotal</b>	<b>\$ 29,547,160</b>	<b>\$ 42,200,984</b>	<b>\$ 12,653,824</b>	<b>\$ 86,615,039</b>	<b>48.7%</b>
<b>Judicial</b>					
13th District Court Services Unit	95,387	95,517	130	210,971	45.3%
Adult Drug Court	345,801	451,004	105,203	815,210	55.3%
Juvenile & Domestic Relations Court	107,634	128,166	20,532	283,163	45.3%
<b>Judicial Subtotal</b>	<b>\$ 548,823</b>	<b>\$ 674,688</b>	<b>\$ 125,865</b>	<b>\$ 1,309,344</b>	<b>51.5%</b>
<b>Constitutionals</b>					
Circuit Court	2,421,357	2,781,102	359,745	5,118,227	54.3%
City Treasurer	128,288	150,648	22,360	370,172	40.7%
Judiciary - Commonwealth Attorney	4,452,620	5,523,921	1,071,301	10,012,867	55.2%
General Registrar	3,816,180	2,662,713	(1,153,467)	5,218,059	51.0%
Richmond Sheriff	23,391,868	27,182,291	3,790,423	49,714,517	54.7%
<b>Constitutionals Subtotal</b>	<b>\$ 34,210,313</b>	<b>\$ 38,300,675</b>	<b>\$ 4,090,363</b>	<b>\$ 70,433,842</b>	<b>54.4%</b>
<b>Public Safety</b>					
Animal Care & Control	1,620,837	1,961,789	340,952	3,311,391	59.2%
Dept. of Emergency Com., Preparedness & Response	4,601,046	5,521,193	920,147	11,035,220	50.0%
Fire & Emergency Services	38,846,599	44,078,589	5,231,990	68,538,612	64.3%
Richmond Police Department	66,823,325	70,252,602	3,429,277	121,651,889	57.7%
<b>Public Safety Subtotal</b>	<b>\$ 111,891,807</b>	<b>\$ 121,814,173</b>	<b>\$ 9,922,366</b>	<b>\$ 204,537,112</b>	<b>59.6%</b>
<b>Operations</b>					
Public Works	22,421,834	23,876,911	1,455,077	54,826,260	43.6%
Department of General Services	-	442,235	442,235	1,724,399	25.6%
<b>Operations Subtotal</b>	<b>\$ 22,421,834</b>	<b>\$ 24,319,145</b>	<b>\$ 1,897,311</b>	<b>\$ 56,550,659</b>	<b>43.0%</b>
<b>Health &amp; Welfare</b>					
Neighborhood & Community Services	1,599,307	3,923,664	2,324,356	9,293,923	42.2%
Justice Services	5,597,046	6,883,000	1,285,954	11,789,959	58.4%
Office of Community Wealth Building	2,616,585	3,422,381	805,796	6,176,868	55.4%
Richmond City Health District	2,316,745	2,316,745	-	4,633,490	50.0%
Social Services	25,022,911	29,196,344	4,173,433	63,902,984	45.7%
<b>Health &amp; Welfare Subtotal</b>	<b>\$ 37,152,595</b>	<b>\$ 45,742,133</b>	<b>\$ 8,589,539</b>	<b>\$ 95,797,224</b>	<b>47.7%</b>
<b>Education</b>					
Richmond Public Schools	110,730,056	119,640,396	8,910,340	239,280,792	50.0%
<b>Education Subtotal</b>	<b>\$ 110,730,056</b>	<b>\$ 119,640,396</b>	<b>\$ 8,910,340</b>	<b>\$ 239,280,792</b>	<b>50.0%</b>
<b>Recreation &amp; Cultural</b>					
Parks, Recreation & Community Facilities	14,357,752	18,314,107	3,956,355	30,276,391	60.5%
Richmond Public Libraries	4,162,174	5,472,556	1,310,381	8,924,201	61.3%
<b>Recreation &amp; Cultural Subtotal</b>	<b>\$ 18,519,927</b>	<b>\$ 23,786,663</b>	<b>\$ 5,266,736</b>	<b>\$ 39,200,592</b>	<b>60.7%</b>
<b>Community Development</b>					
Economic Development	3,761,888	2,813,284	(948,604)	6,425,467	43.8%
Housing & Community Development	1,376,429	3,581,761	2,205,332	17,795,870	20.1%
Office of Sustainability	429,042	776,392	347,350	1,964,028	39.5%
Planning & Development Review	7,244,959	9,142,820	1,897,861	18,897,492	48.4%
<b>Community Development Subtotal</b>	<b>\$ 12,812,317</b>	<b>\$ 16,314,257</b>	<b>\$ 3,501,940</b>	<b>\$ 45,082,857</b>	<b>36.2%</b>
<b>Other Public Services</b>					
Non-Departmental	53,655,585	47,355,158	(6,300,426)	145,552,434	32.5%
General Fund Transfer to Debt Service & Capital	51,892,487	46,030,885	(5,861,601)	105,796,201	43.5%
Capital Projects	3,996,198	29,850,489	25,854,290	-	N/A
Traffic Control Capital Projects	-	-	-	-	N/A
VDOT Urban Projects	-	-	-	-	N/A
Default	(31,890)	566,003	597,892	-	N/A
<b>Other Public Services Subtotal</b>	<b>\$ 109,512,380</b>	<b>\$ 123,802,535</b>	<b>\$ 14,290,155</b>	<b>\$ 251,348,635</b>	<b>49.3%</b>
<b>General Fund Expenditure Grand Total</b>	<b>\$ 487,347,211</b>	<b>\$ 556,595,650</b>	<b>\$ 69,248,438</b>	<b>\$ 1,090,156,095</b>	<b>51.1%</b>

**CITY OF RICHMOND, VIRGINIA**  
**APPENDIX C - BUDGETARY COMPARISON SCHEDULE GENERAL FUND ENCUMBRANCES**  
**FOR THE MONTH ENDING ON JANUARY 31, 2025 (UNAUDITED)**

	FY25 (YTD) Encumbrances
<b>General Government</b>	
Budget and Strategic Planning	97,889
Chief Administrative Office	55,713
Citizen Service & Response	110,381
City Assessor	(551,556)
City Attorney	70,050
City Auditor	(4,531)
City Clerk	(17,763)
City Council	40,649
Council Chief of Staff	74,359
Finance	6,397,439
Human Resources	1,234,711
Inspector General	-
Mayor's Office	2,219
Minority Business Development	169,019
Office of Intergovernmental Affairs	64,000
Office of Strategic Communications & Civic Engagement	358,670
Procurement Services	45,314
<b>General Government Subtotal</b>	<b>\$ 8,146,563</b>
<b>Judicial</b>	
13th District Court Services Unit	12,068
Adult Drug Court	32,181
Juvenile & Domestic Relations Court	15,736
<b>Judicial Subtotal</b>	<b>\$ 59,985</b>
<b>Constitutionals</b>	
Circuit Court	(7,537)
City Treasurer	-
Judiciary - Commonwealth Attorney	53,059
General Registrar	2,185,885
Richmond Sheriff	6,612,859
<b>Constitutionals Subtotal</b>	<b>\$ 8,844,265</b>
<b>Public Safety</b>	
Animal Care & Control	52,252
Dept. of Emergency Communications, Preparedness & Response	1,629,453
Fire & Emergency Services	752,130
Richmond Police Department	4,768,684
<b>Public Safety Subtotal</b>	<b>\$ 7,202,519</b>
<b>Operations</b>	
Public Works	7,840,429
Department of General Services	17,348
<b>Operations Subtotal</b>	<b>\$ 7,857,777</b>
<b>Health &amp; Welfare</b>	
Neighborhood & Community Services	1,169,426
Justice Services	844,859
Office of Community Wealth Building	329,735
Richmond City Health District	-
Social Services	1,066,501
<b>Health &amp; Welfare Subtotal</b>	<b>\$ 3,410,521</b>
<b>Education</b>	
Richmond Public Schools	-
<b>Education Subtotal</b>	<b>\$ -</b>
<b>Recreation &amp; Cultural</b>	
Parks, Recreation & Community Facilities	1,664,967
Richmond Public Libraries	207,411
<b>Recreation &amp; Cultural Subtotal</b>	<b>\$ 1,872,378</b>
<b>Community Development</b>	
Economic Development	301,742
Housing & Community Development	12,998,130
Office of Sustainability	407,192
Planning & Development Review	1,574,008
<b>Community Development Subtotal</b>	<b>\$ 15,281,071</b>
<b>Other Public Services</b>	
Non-Departmental	9,734,346
General Fund Transfer to Debt Service & Capital	-
Capital Projects	-
Traffic Control Capital Projects	-
VDOT Urban Projects	-
Default	-
<b>Other Public Services Subtotal</b>	<b>\$ 9,734,346</b>
<b>General Fund Encumbrance Total</b>	<b>\$ 62,409,425</b>