

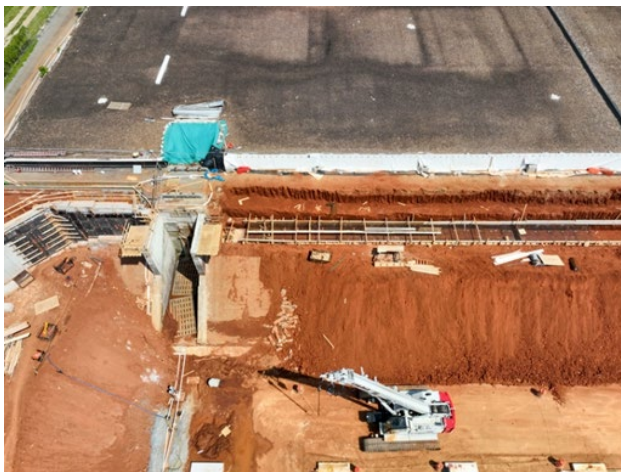


Department of Public Utilities

Byrd Park Reservoir Rehabilitation Newsletter

Project Information

The Byrd Park Reservoir was built in 1876 and has been serving the City of Richmond residents and surrounding counties continuously since then. The Reservoir operates as two finished water tanks. Upgrades and maintenance have occurred over the years to ensure peak operating capacity. DPU is in the process of additional upgrades to improve the distribution system reliability and increase the operational flexibility of facilities associated with the Reservoir. The Byrd Park Tank concrete roofs are reaching the end of their useful life and are being replaced by new aluminum roofs.



Byrd Park Reservoir Rehabilitation Newsletter

Frequently Asked Questions

What is happening now?

Construction of Phase II began in early 2023 with the fencing in of the construction area and delivery and set up of work trailers. The area between the Columbus Pump Station and Fountain Lake has been prepped for the installation of the temporary dewatering equipment. Demolition of the west reservoir roof is complete. The contractor is now pouring concrete walls and footings to support the new roof. The roof on the west reservoir is scheduled to be complete late 2024.

How long will this project last and will work impact my water service?

Project work has been planned to allow the water system to remain in service throughout the anticipated four year construction effort. This project has been designed and construction efforts phased so as not to impact water service.

Will this project impact access to Byrd Park or Park events?

The park will remain open. Construction will be sequenced to maintain use of the park. Construction will take place within a fenced area whose boundaries will shift as the work progresses. Access to the rest of the park and its trails will be open to the public. DPU has and will continue to work closely with the Department of Parks, Recreation and Community Facilities (PRCF) to ensure park events can continue as planned.

Will this project impact traffic in the area?

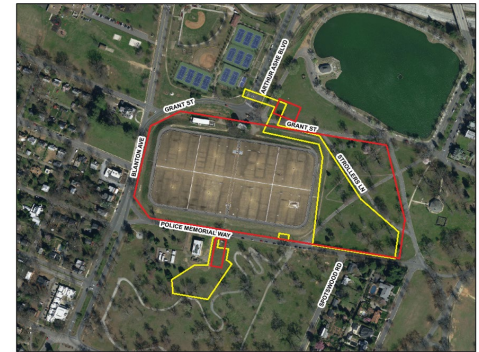
Some short-term road and lane closures will be needed on roads around the Reservoir. Public notification will take place prior to the road closures. Be sure to follow @DPUStreetNews on Twitter / X for this and all road closures.

Will this project impact on-street parking?

During construction, on-street parking may be temporarily restricted during lane or road closures. Signs will be posted in advance.

When will this work be performed?

Work may be performed between the hours of 8:00 a.m. to 5:00 p.m., Monday through Friday. Some isolated construction tasks may need to be performed after hours or on weekends.



If you have questions or comments about this project, please contact the Department of Public Utilities:

Ricky Hatfield

Capital Projects Manager Sr.

(804) 646 -1933

Ricky.Hatfield@rva.gov

Media Contact:

Rhonda Johnson

Public Information Manager, Sr.

(804) 646 - 5463

Rhonda.Johnson@rva.gov