

CITY OF RICHMOND, VIRGINIA

DEPARTMENT OF PUBLIC WORKS

TRANSPORTATION ENGINEERING DIVISION



2020 REPAVING BIKE LANE PROJECTS (6 CORRIDORS)

**MAGNOLIA STREET CLIMBING BIKE LANE
(FROM 1ST AVENUE TO RADY STREET)
PROJECT # _____, AWARD # _____**

REVISIONS

NO.	DATE	COMMENTS

CITY OF RICHMOND

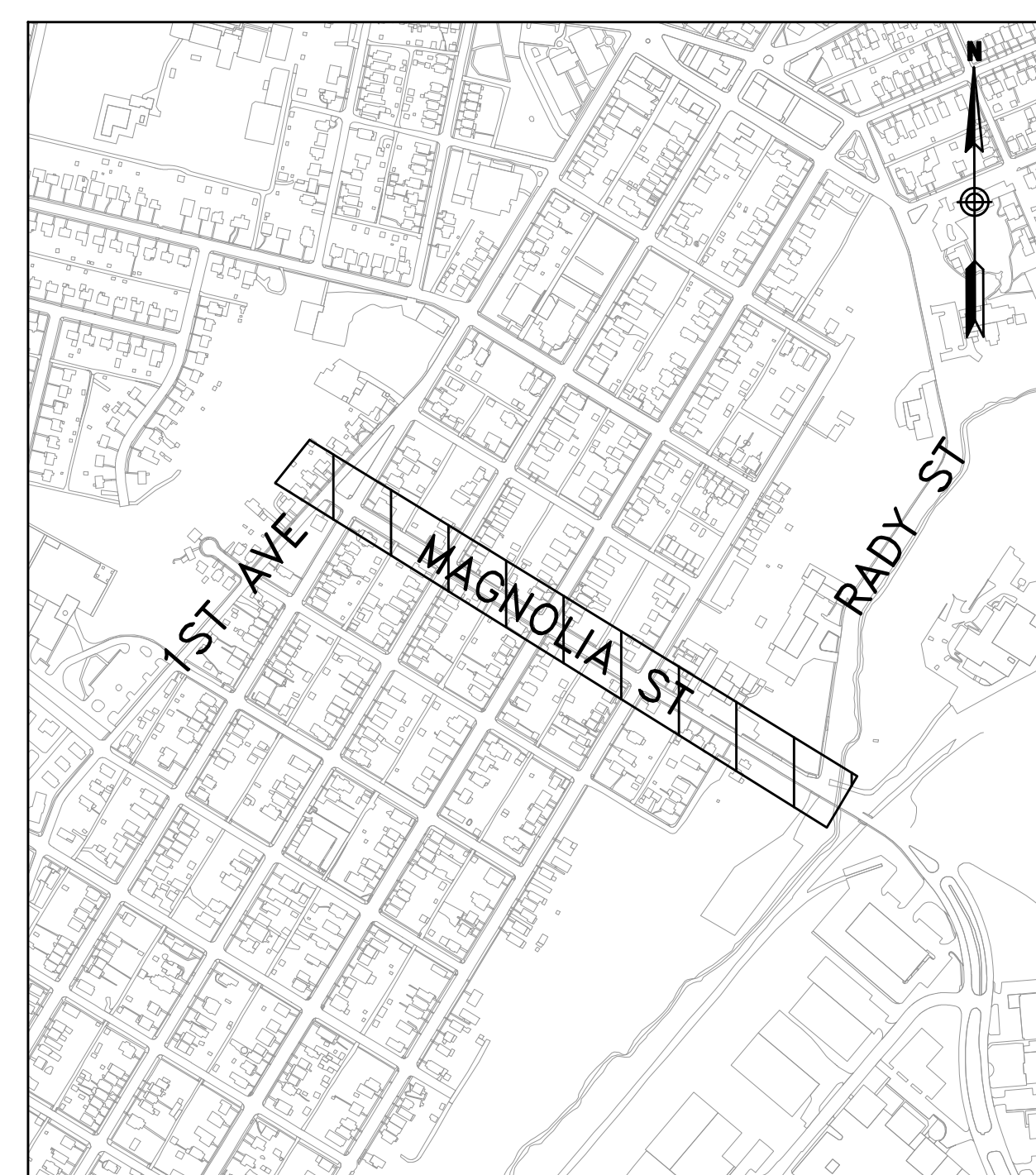
APPROVED FOR CONSTRUCTION

DATE	SURVEYS SUPERINTENDENT
DATE	PROJECT MANAGER
DATE	MAINTENANCE ENGINEER
DATE	CITY TRANSPORTATION ENGINEER
DATE	CAPITAL PROJECTS ADMINISTRATOR
DATE	CITY ENGINEER
DATE	DIRECTOR OF PUBLIC WORKS

INDEX OF SHEETS

SHEET TITLE	SHEET NO.
TITLE SHEET	1
QUANTITIES / DETAILS	2
EXISTING CONDITIONS PLAN	3-4
PROPOSED PAVEMENT MARKING AND SIGNAGE PLAN PLAN	5-6

LOCATION MAP



 PROJECT AREA

Not To Scale

**60% COMPLETE -
NOT FOR
CONSTRUCTION**

CITY OF RICHMOND

DEPARTMENT OF PUBLIC WORKS

RICHMOND, VIRGINIA

DRAWING NO.: X-XXXX

DESIGN FEATURES RELATING TO CONSTRUCTION OR TO REGULATION AND CONTROL OF TRAFFIC MAY BE SUBJECT TO CHANGE AS DEEMED NECESSARY BY THE CITY OF RICHMOND. THIS PROJECT IS TO BE CONSTRUCTED IN ACCORDANCE WITH THE 2016 VDOT ROAD AND BRIDGE SPECIFICATIONS, 2016 VDOT ROAD AND BRIDGE STANDARDS, 2009 FHWA MANUAL ON UNIFORM TRAFFIC CONTROL DEVICES (MUTCD) WITH REVISIONS 1 AND 2 DATED MAY 2012, 2011 VIRGINIA SUPPLEMENT TO THE MUTCD, 2011 VIRGINIA WORK AREA PROTECTION MANUAL (REVISION 2, DATED SEPTEMBER 1, 2019), APPLICABLE CITY OF RICHMOND STANDARDS AND SPECIFICATIONS, AND AS AMENDED BY CONTRACT PROVISIONS AND THE COMPLETE ELECTRONIC VERSION OF THE PLAN ASSEMBLY.

NO ADDITIONAL RIGHT OF WAY REQUIRED FOR THIS PROJECT.

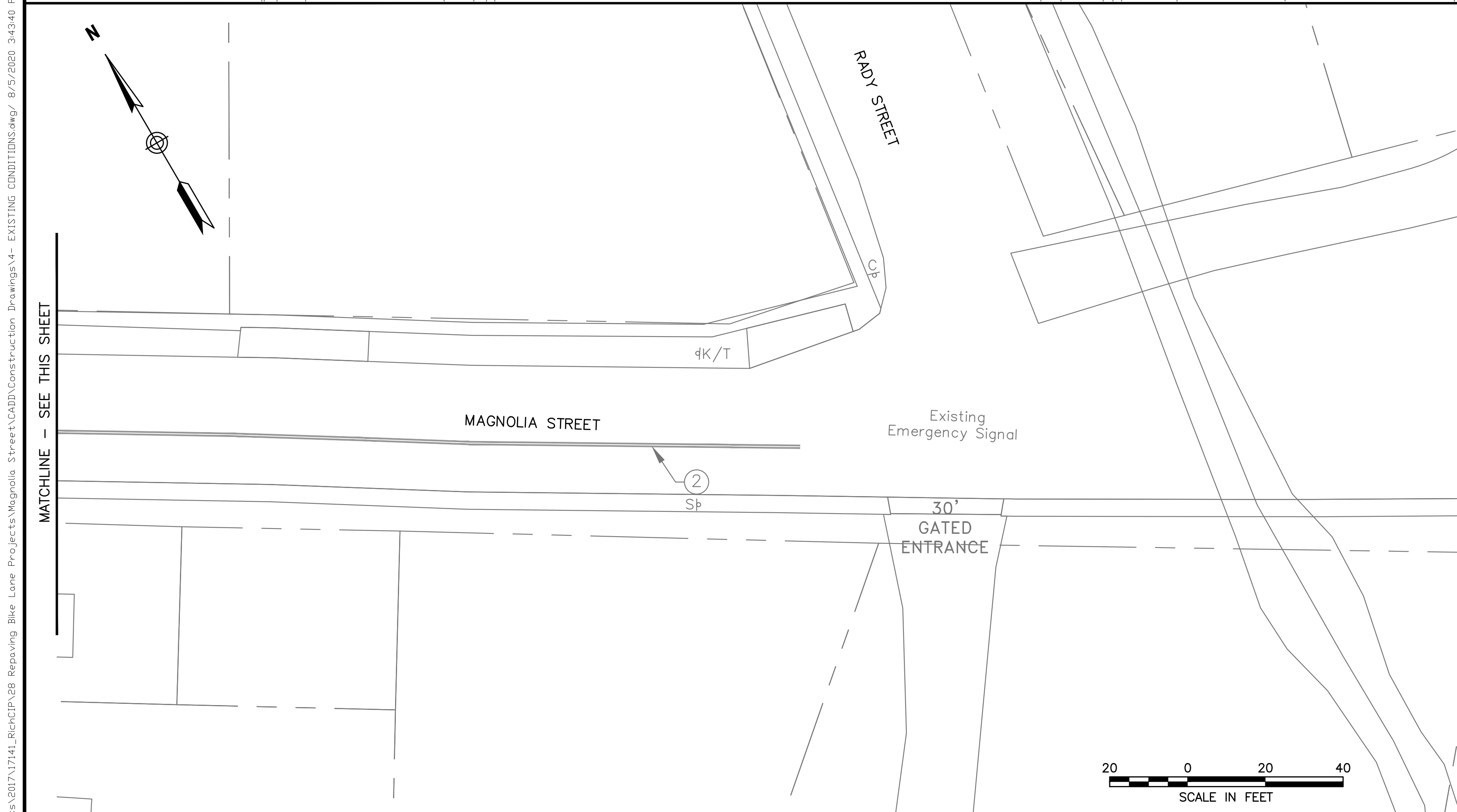
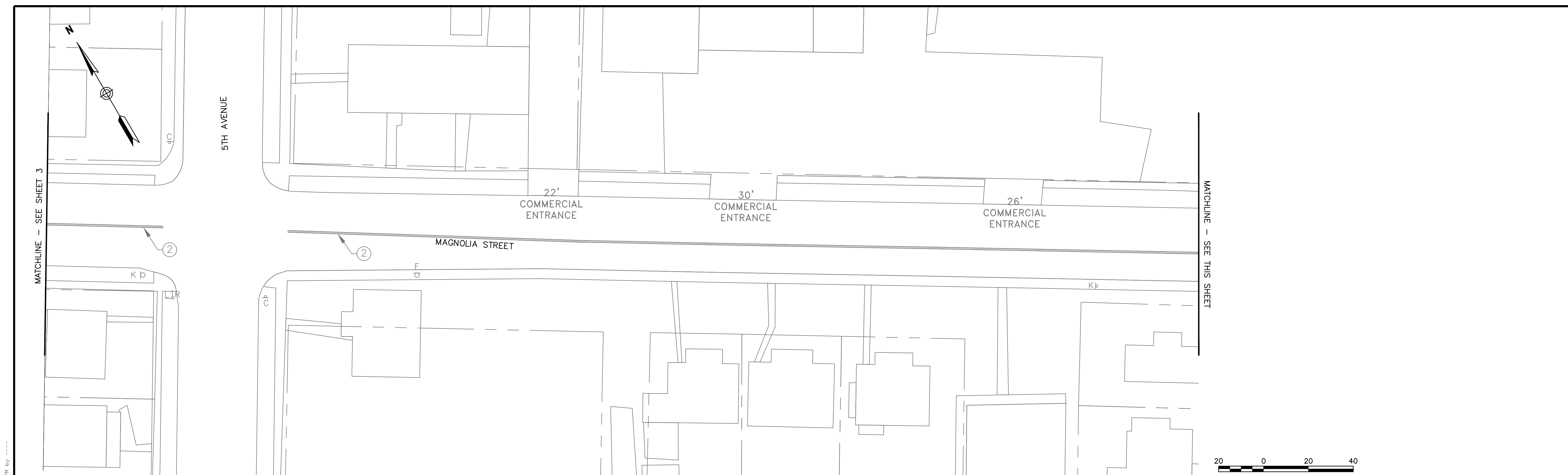
AUGUST 2020



P: 804.782.1903
2100 E. Cary St. Suite 309 | Richmond, VA 23223

Engineers | Construction Managers | Planners | Scientists
www.rkk.com

Responsive People | Creative Solutions



EXISTING SIGN LEGEND		
A: 1ST AV 2600 STREET NAME SIGN	H: ALL WAY SIGN	N: ADOPT-A-STREET SIGN
B: MAGNOLIA ST 1200 STREET NAME SIGN	I: MAGNOLIA ST STREET NAME SIGN	O: GRTC BUS STOP SIGN STOP # 145 ROUTES 3A, 3B, 3C
C: STOP SIGN	J: 3RD AV STREET NAME SIGN	P: NO PARKING TOW AWAY RIGHT ARROW SIGN
D: 2ND AV 2600 STREET NAME SIGN	K: SPEED LIMIT 25 SIGN	Q: GRTC BUS STOP SIGN STOP # 146 ROUTES 3A, 3B, 3C
E: MAGNOLIA ST 1300 STREET NAME SIGN	L: MAGNOLIA ST 1500 STREET NAME SIGN	R: 5TH AV STREET NAME SIGN
F: NEIGHBORHOOD WATCH SIGN	M: 4TH AV 2500 STREET NAME SIGN	S: CAUTION UNDERPASS SUBJECT TO FLOODING SIGN
G: NO PARKING LEFT ARROW SIGN		T: PARKED VEHICLES AHEAD SIGN

EXISTING PAVEMENT MARKINGS LEGEND
①: 24" SOLID WHITE STOP BAR
②: 4" SOLID YELLOW LINE (DOUBLE) WITH 4" SPACE
③: 24" SOLID WHITE CROSSWALK LADDER BARS

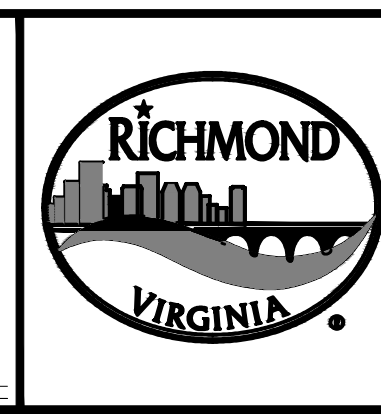
60% COMPLETE:
NOT FOR
CONSTRUCTION

NOTES

- Lot dimensions in parentheses are from deed.
- Property owners correct as of 20__.
- Ordinance Number _____
- Adopted _____
- Accepted _____

REFERENCES

Existing	Proposed
Curb & Gutter	Curb & Gutter
Sidewalk	Sidewalk
Basin	Basin
Storm Sewer	Storm Sewer
Sewer Manhole	Sewer Manhole
Sanitary Sewer (round)	Sanitary Sewer (round)
Sanitary Sewer (rect. man)	Sanitary Sewer (rect. man)
Gas Line	Gas Line
Electric Line	Electric Line
Telephone/Telegraph	Telephone/Telegraph
TV Cable	TV Cable
Water Line	Water Line
Tree / Exst. Tree To Be Removed / Stamp	Tree / Exst. Tree To Be Removed / Stamp
Property Line	Property Line



Technical	Administrative
Surveys Superintendent	Capital Project Administrator
Project Manager	City Engineer
Maintenance Engineer	Director of Public Works
City Transportation Engineer	

DEPARTMENT OF PUBLIC WORKS
RICHMOND, VIRGINIA

RK&K 2020 REPAVING BIKE LANE PROJECTS (6 CORRIDORS)
MAGNOLIA STREET CLIMBING BIKE LANE
EXISTING CONDITIONS

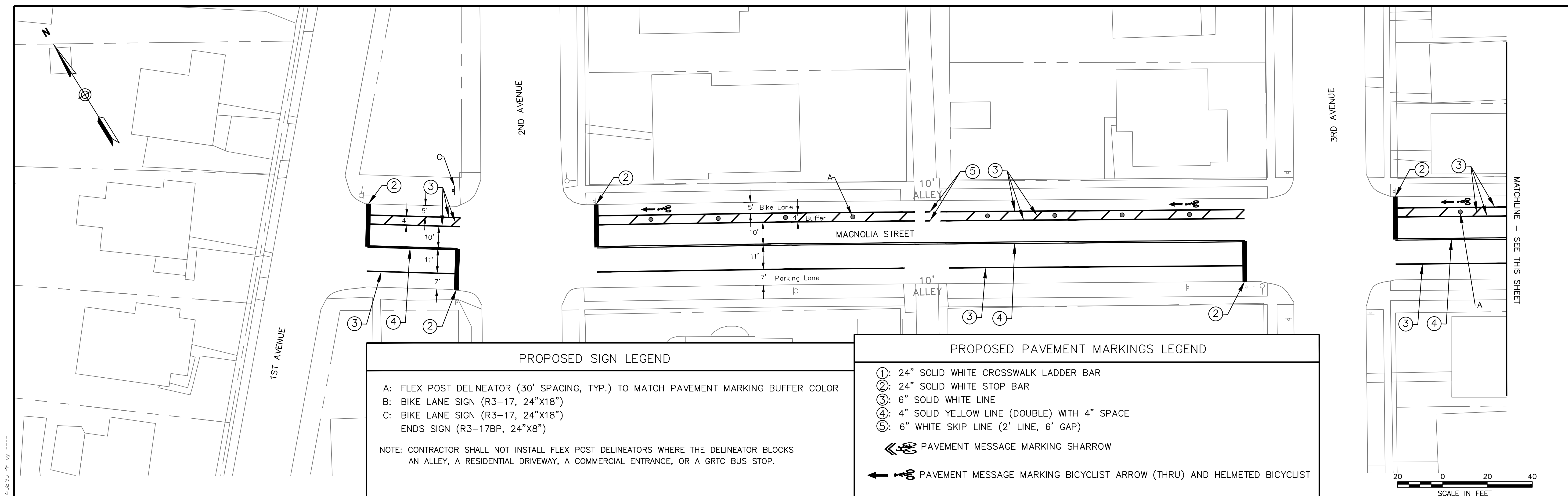
RESPONSIVE PEOPLE • CREATIVE SOLUTIONS

AUTHORITY: CITY OF RICHMOND

DESIGN BY: BMR	REVIEWED BY:	FIELD NOTES:	SCALE: 1"=20'	DATE: AUGUST 2020	PROJECT: SHEET 4	DRAWING NO: X-XXXX
DRAWN BY: KJF						
CHECKED BY: OLP						

VDOT PROJECT NO.: N/A

\oadr\hkg\com\Fis\Ciouda\Projects\2017\17141_Rich\CP\28_Repaving Bike Lane Projects\Magnolia Street\CADD\Construction Drawings\4- EXISTING CONDITIONS.dwg / 8/5/2020 9:43:40 PM by ----



PROPOSED SIGN LEGEND

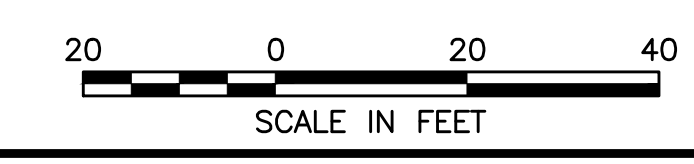
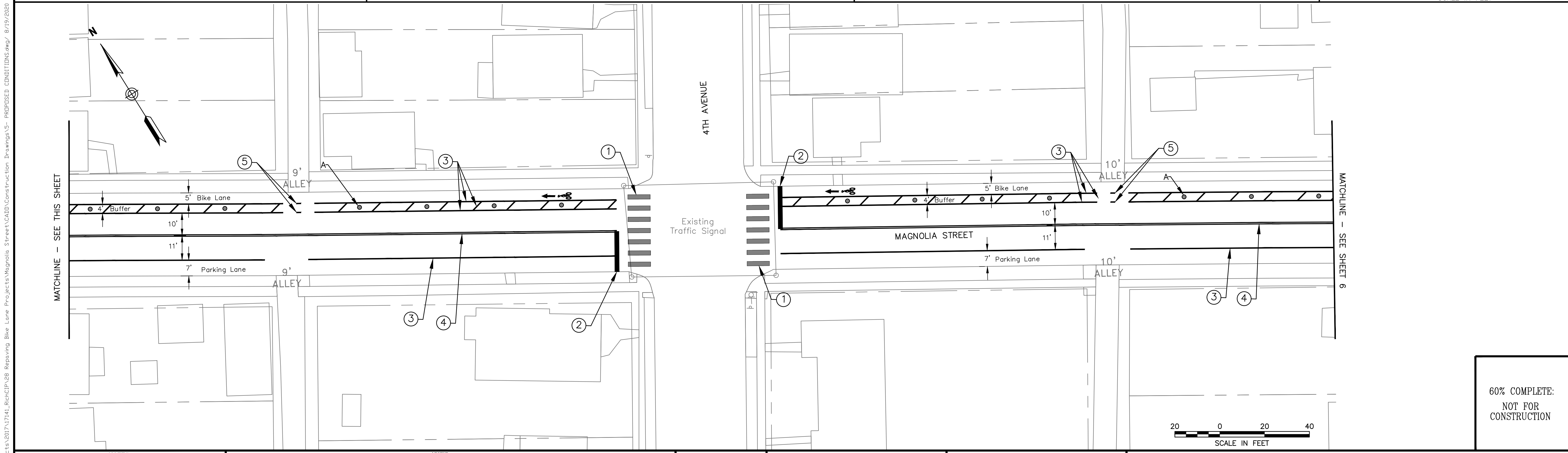
A: FLEX POST DELINEATOR (30' SPACING, TYP.) TO MATCH PAVEMENT MARKING BUFFER COLOR
 B: BIKE LANE SIGN (R3-17, 24"x18")
 C: BIKE LANE SIGN (R3-17, 24"x18")
 ENDS SIGN (R3-17BP, 24"x8")

NOTE: CONTRACTOR SHALL NOT INSTALL FLEX POST DELINEATORS WHERE THE DELINEATOR BLOCKS AN ALLEY, A RESIDENTIAL DRIVEWAY, A COMMERCIAL ENTRANCE, OR A GRTC BUS STOP.

PROPOSED PAVEMENT MARKINGS LEGEND

①: 24" SOLID WHITE CROSSWALK LADDER BAR
 ②: 24" SOLID WHITE STOP BAR
 ③: 6" SOLID WHITE LINE
 ④: 4" SOLID YELLOW LINE (DOUBLE) WITH 4" SPACE
 ⑤: 6" WHITE SKIP LINE (2' LINE, 6' GAP)

← PAVEMENT MESSAGE MARKING SHARROW
 ← PAVEMENT MESSAGE MARKING BICYCLIST ARROW (THRU) AND HELMETED BICYCLIST



60% COMPLETE:
NOT FOR
CONSTRUCTION

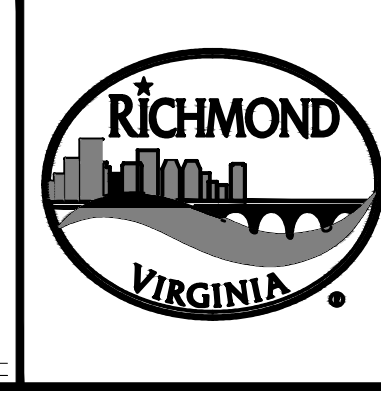
NOTES

- Lot dimensions in parentheses are from deed.
- Property owners correct as of _____ 20__
- Ordinance Number _____
- Adopted _____
- Accepted _____

REFERENCES

LEGEND

Existing Curb & Gutter	Existing Curb Cut Ramp	Proposed Conc. Sidewalk	Brick Sidewalk
Sidewalk	Coping	Decorative Light	Conduit
Basin	Alley Crossing/Driveway	Conduit (Conc. Encased)	Retaining Wall
Storm Sewer	Fire Hydrant		
Sewer Manhole	Edge of Pavement		
Sanitary Sewer (round)	Fence		
Sanitary Sewer (rect. man)	Cornerstone		
Gas Line	Property Pin		
Electric Line	Utility Pole		
Telephone/Telegraph	Manhole		
TV Cable	Basin		
Water Line	Curb & Gutter		
Tree / Exst. Tree To Be Removed / Stamp	Asphalt		
Property Line			



Technical	Administrative
Surveys Superintendent	Capital Project Administrator
Project Manager	City Engineer
Maintenance Engineer	Director of Public Works
City Transportation Engineer	

DEPARTMENT OF PUBLIC WORKS
RICHMOND, VIRGINIA

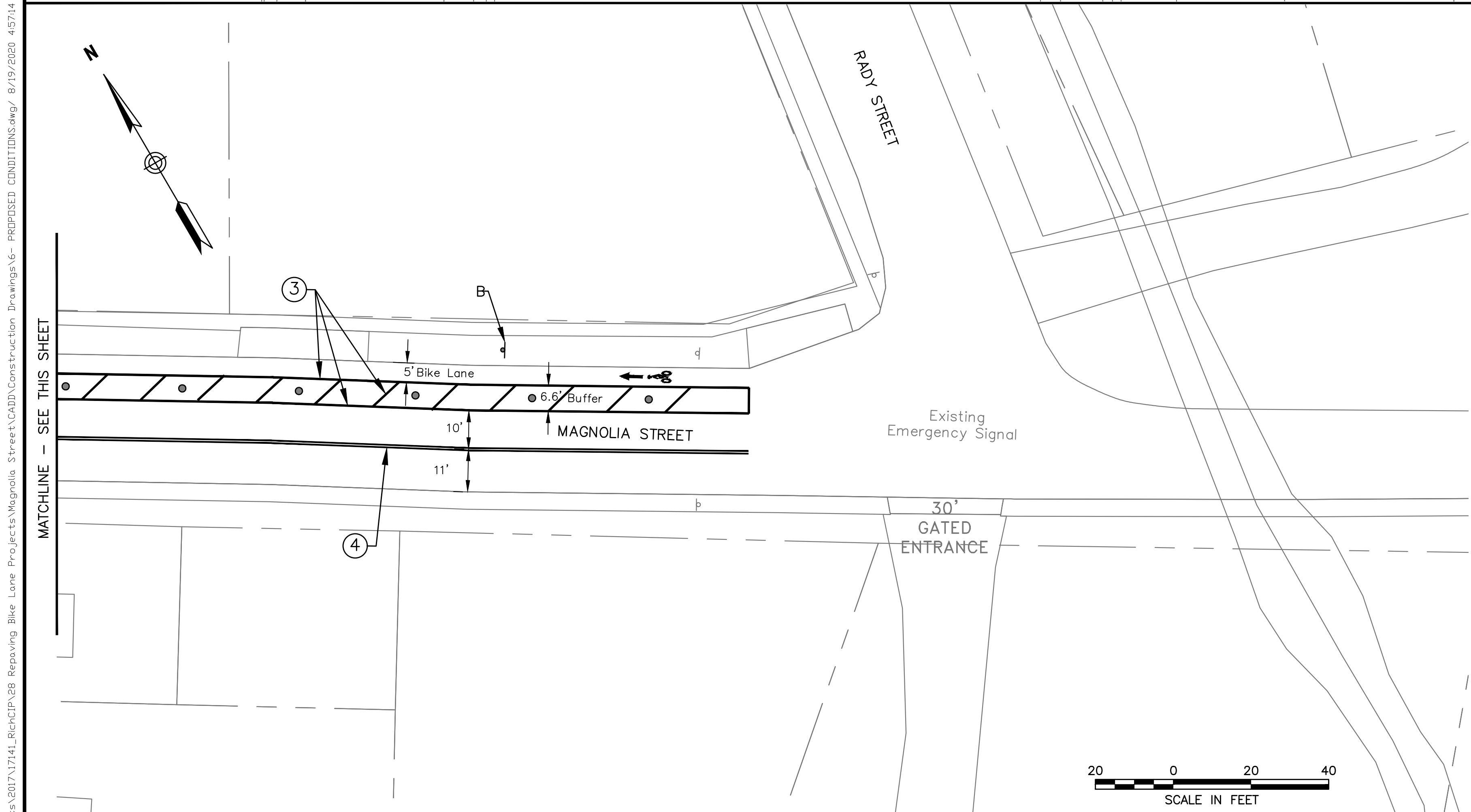
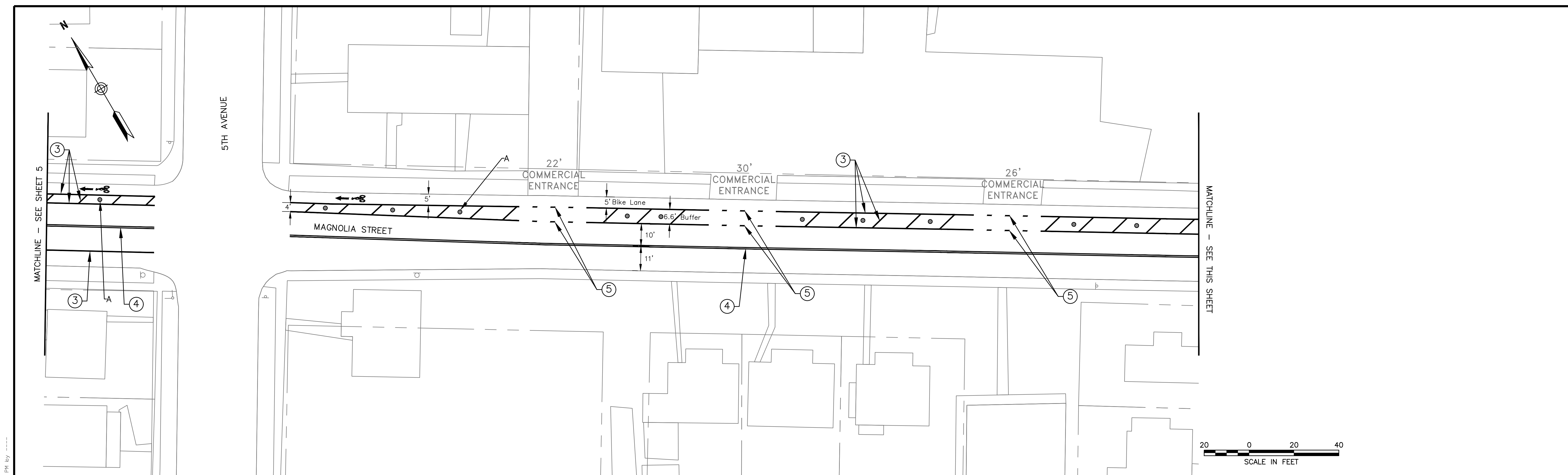
RK&K 2020 REPAVING BIKE LANE PROJECTS (6 CORRIDORS)
MAGNOLIA STREET CLIMBING BIKE LANE
PROPOSED CONDITIONS

RESPONSIVE PEOPLE • CREATIVE SOLUTIONS

AUTHORITY: CITY OF RICHMOND VDOT PROJECT NO.: N/A

DESIGN BY: BMR	REVIEWED BY:	FIELD NOTES:	SCALE: 1"=20'	DATE: AUGUST 2020	PROJECT: SHEET 5	DRAWING NO: X-XXXXX
CHECKED BY: KLF						
OLP						

\\nashrk.com\Fis\c\p\Projects\2017\17141_Richmond\Projects\Magnolia Street\CADD\Construction Drawings\5- PROPOSED CONDITIONS.dwg / 8/19/2020 4:52:35 PM by ----



PROPOSED SIGN LEGEND	
A:	FLEX POST DELINEATOR (30' SPACING, TYP.) TO MATCH PAVEMENT MARKING BUFFER COLOR
B:	BIKE LANE SIGN (R3-17, 24"X18")
C:	BIKE LANE SIGN (R3-17, 24"X18")
	ENDS SIGN (R3-17BP, 24"X8")
NOTE: CONTRACTOR SHALL NOT INSTALL FLEX POST DELINEATORS WHERE THE DELINEATOR BLOCKS AN ALLEY, A RESIDENTIAL DRIVEWAY, A COMMERCIAL ENTRANCE, OR A GRTC BUS STOP.	

PROPOSED PAVEMENT MARKINGS LEGEND	
①	24" SOLID WHITE CROSSWALK LADDER BAR
②	24" SOLID WHITE STOP BAR
③	6" SOLID WHITE LINE
④	4" SOLID YELLOW LINE (DOUBLE) WITH 4" SPACE
⑤	6" WHITE SKIP LINE (2' LINE, 6' GAP)
	PAVEMENT MESSAGE MARKING SHARROW
	PAVEMENT MESSAGE MARKING BICYCLIST ARROW (THRU) AND HELMETED BICYCLIST

60% COMPLETE:
NOT FOR
CONSTRUCTION

NOTES

- Lot dimensions in parentheses are from deed.
- Property owners correct as of _____ 20__
- Ordinance Number _____
- Adopted _____
- Accepted _____

REFERENCES

LEGEND	
Existing Curb	Existing Curb Cut Ramp
Curb & Gutter	Coping
Sidewalk	Alley Crossing/Driveway
Basin	Fire Hydrant
Storm Sewer	Edge of Pavement
Sewer Manhole	Fence
Sanitary Sewer (round)	Cornerstone
Sanitary Sewer (rect. man)	Property Pin
Gas Line	Utility Pole
Electric Line	Proposed Sewer
Telephone/Telegraph	Manhole
TV Cable	Basin
Water Line	Curb & Gutter
Tree / Exst. Tree To Be Removed / Stamp	Asphalt
Property Line	



Technical	Administrative
Surveys Superintendent	Capital Project Administrator
Project Manager	City Engineer
Maintenance Engineer	Director of Public Works
City Transportation Engineer	

DEPARTMENT OF PUBLIC WORKS
RICHMOND, VIRGINIA

RK&K 2020 REPAVING BIKE LANE PROJECTS (6 CORRIDORS)
MAGNOLIA STREET CLIMBING BIKE LANE
PROPOSED CONDITIONS

RESPONSIVE PEOPLE • CREATIVE SOLUTIONS

AUTHORITY: CITY OF RICHMOND VDOT PROJECT NO.: N/A

DESIGN BY: BMR	REVIEWED BY:	FIELD NOTES:	SCALE: 1"=20'	DATE: AUGUST 2020	PROJECT: SHEET 6	DRAWING NO. X-XXXX
CHECKED BY: KLF						
OJP						

\oadr\hkh\com\Fis\Cloud\Projects\2017\17141_Rich\Proj\Bike Lane Projects\Magnolia Street\CADD\Construction Drawings\6- PROPOSED CONDITIONS.dwg / 8/19/2020 4:57:14 PM by ----