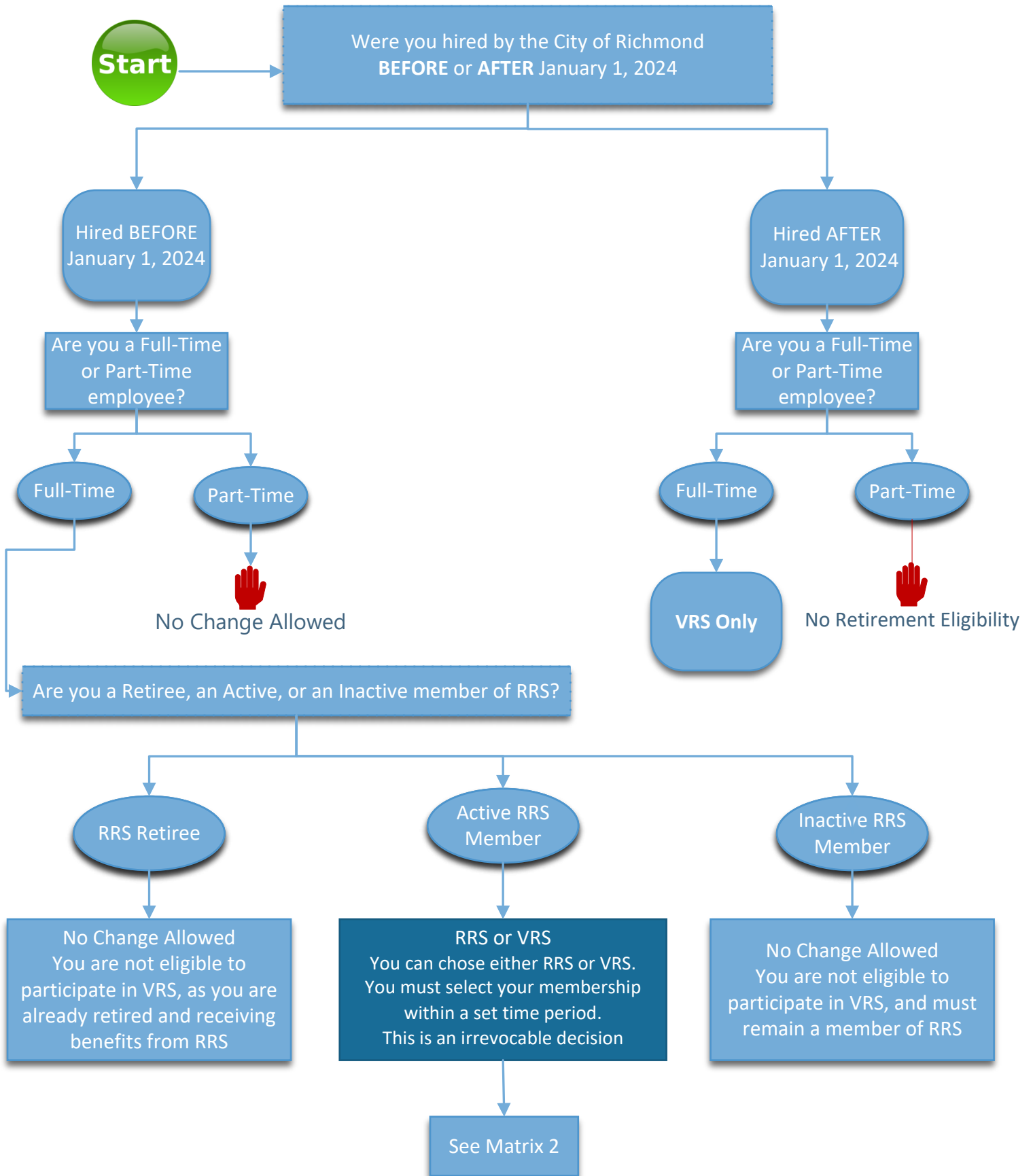


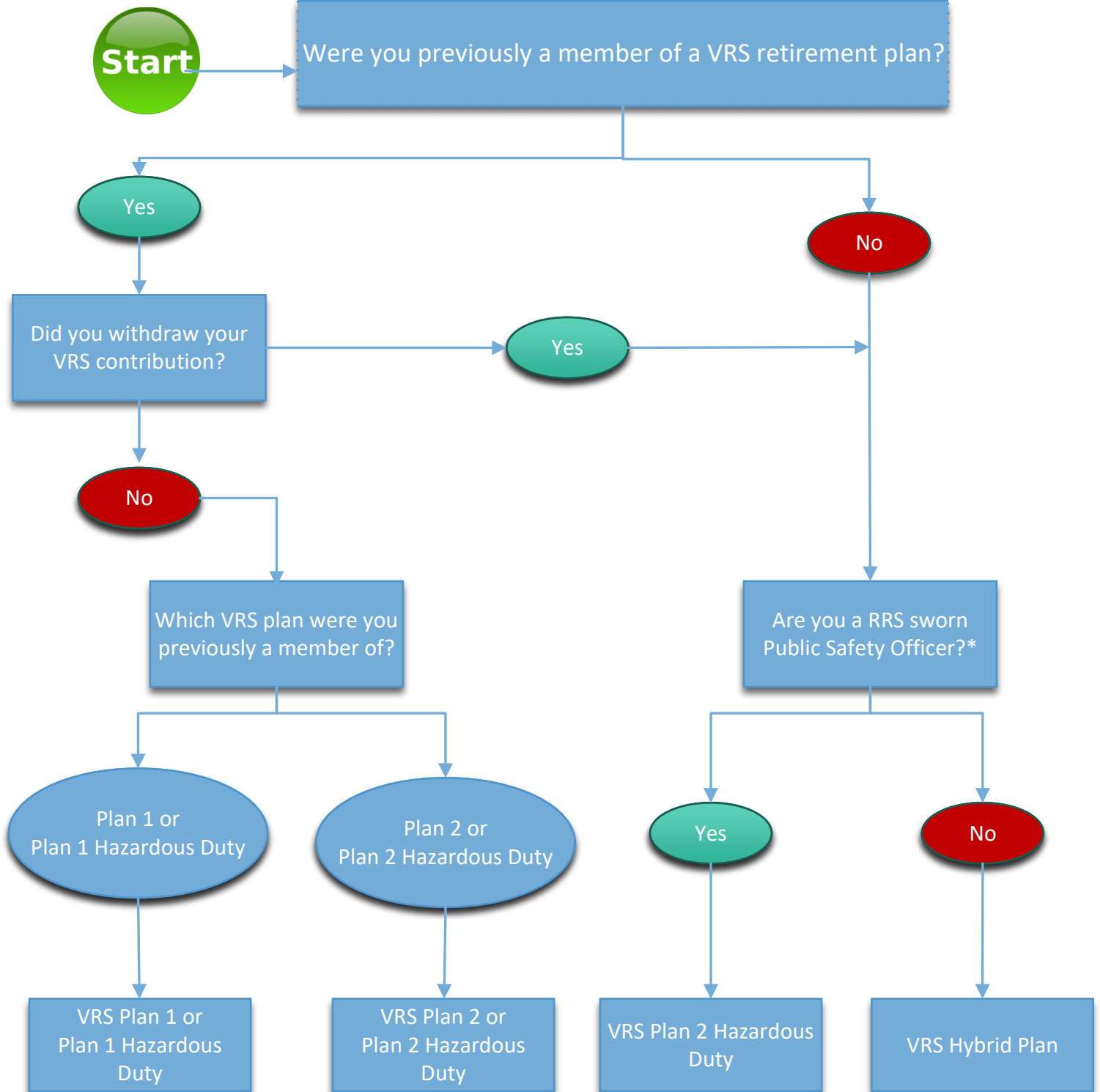


I am (or was previously) an employee of the City of Richmond. WHICH RETIREMENT SYSTEM IS AVAILABLE TO ME?





I am an active RRS member who may participate in VRS. WHICH VRS PLAN AM I ELIGIBLE FOR?



*A Sworn Public Safety Officer is a full-time salaried local law enforcement officer or firefighter.