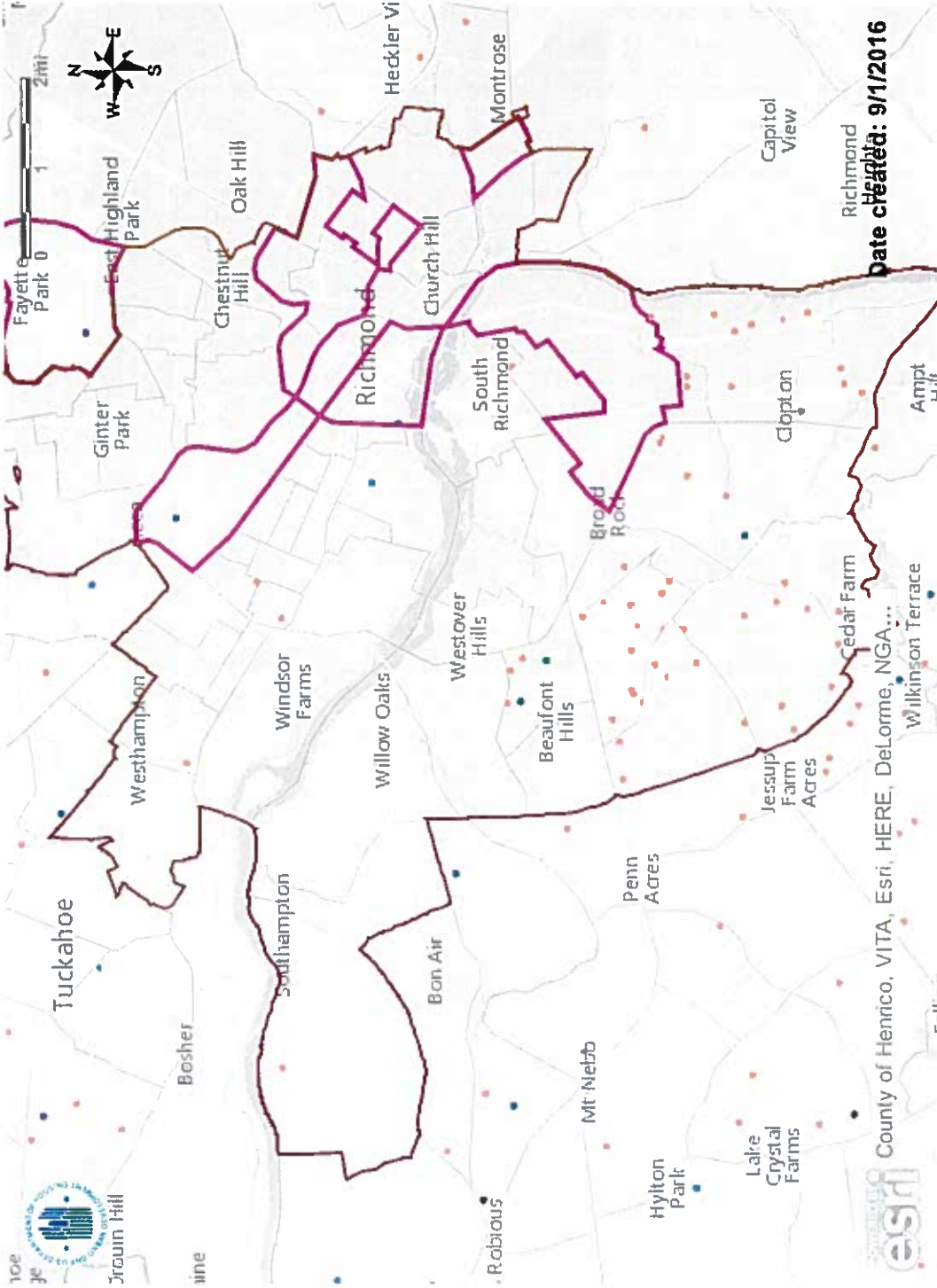


HUD Affirmatively Furthering Fair Housing Data and Mapping Tool



Name: Map 4 - LEP

Description: LEP persons (5 most commonly used languages) for Jurisdiction and Region with R/ECAPs

Jurisdiction: Richmond (CDBG, HOME, ESG)

Region: Richmond, VA

Table 1 - Demographics

Race/Ethnicity		#		%	
White, Non-Hispanic	79,813	39.08%	717,866	59.42%	
Black, Non-Hispanic	102,264	50.08%	359,720	29.78%	
Hispanic	12,803	6.27%	62,162	5.15%	
Asian or Pacific Islander, Non-Hispanic	4,772	2.34%	39,300	3.25%	
Native American, Non-Hispanic	514	0.25%	4,296	0.36%	
Other, Non-Hispanic	367	0.18%	2,222	0.18%	
National Origin		Country		Country	
#1 country of origin	2,309	1.13%	9,675	0.80%	Mexico
#2 country of origin	1,564	0.77%	9,652	0.80%	El Salvador
#3 country of origin	1,413	0.69%	6,512	0.54%	Guatemala
#4 country of origin	856	0.42%	4,103	0.34%	Honduras
#5 country of origin	664	0.33%	3,978	0.33%	Korea
#6 country of origin	472	0.23%	3,898	0.32%	Vietnam
#7 country of origin	401	0.20%	3,021	0.25%	China excl. Hong Kong & Taiwan
#8 country of origin	386	0.19%	2,393	0.20%	Germany
#9 country of origin	331	0.16%	2,307	0.19%	Honduras
#10 country of origin	280	0.14%	2,148	0.18%	Philippines
Limited English Proficiency (LEP) Language		Language		Language	
#1 LEP Language	6,537	3.36%	23,608	1.95%	Spanish
#2 LEP Language	353	0.18%	2,558	0.21%	Vietnamese
#3 LEP Language	308	0.16%	1,988	0.18%	Chinese
#4 LEP Language	289	0.15%	1,954	0.16%	Korean
#5 LEP Language	228	0.12%	1,536	0.13%	Other Asian Language
#6 LEP Language	197	0.10%	1,393	0.12%	Arabic
#7 LEP Language	168	0.09%	1,116	0.09%	African
#8 LEP Language	115	0.06%	862	0.07%	French
#9 LEP Language	100	0.05%	771	0.06%	Cambodian
#10 LEP Language	92	0.05%	741	0.06%	Russian
Disability Type					
Hearing difficulty	5,129	2.67%	32,668	2.92%	
Vision difficulty	6,305	3.28%	22,766	2.03%	
Cognitive difficulty	13,817	7.20%	58,984	5.27%	
Ambulatory difficulty	17,639	9.19%	74,056	6.62%	
Self-care difficulty	6,126	3.19%	28,468	2.54%	
Independent living difficulty	11,209	5.84%	49,624	4.43%	
Sex					
Male	97,331	47.66%	583,827	48.33%	
Female	106,883	52.34%	624,274	51.67%	
Age					
Under 18	38,009	18.61%	282,501	23.38%	
18-64	143,586	70.31%	780,357	64.59%	
65+	22,619	11.08%	145,243	12.02%	
Family Type					
Families with children	17,466	42.29%	139,216	44.91%	
<p>Note 1: All % represent a share of the total population within the jurisdiction or region, except family type, which is out of total families.</p> <p>Note 2: 10 most populous places of birth and languages at the jurisdiction level may not be the same as the 10 most populous at the Region level, and are thus labeled separately.</p> <p>Note 3: Data Sources: Decennial Census, ACS</p> <p>Note 4: Refer to the Data Documentation for details (www.hudexchange.info).</p>					