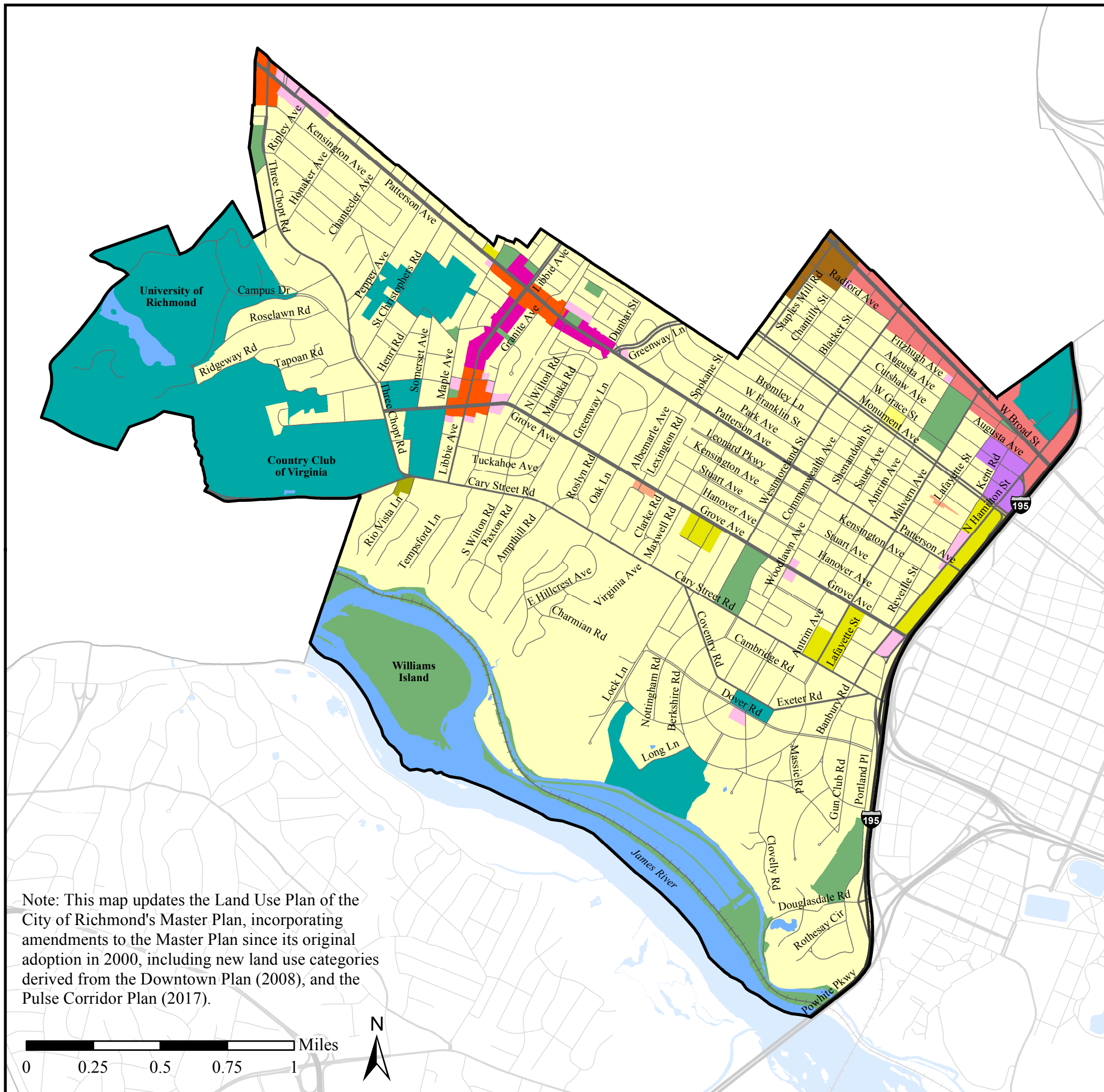


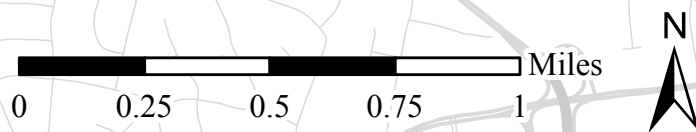
Far West Planning District

Land Use Plan

-  Single-Family (Low Density)
-  Single-Family (Medium Density)
-  Multi-Family (Medium Density)
-  Multi-Family (High Density)
-  Community Commercial
-  Neighborhood Commercial
-  General Commercial
-  Mixed Use
-  Transitional Office
-  Institutional
-  Public & Open Space
-  Corridor Mixed-Use
-  Nodal Mixed-Use
-  Transitional



Note: This map updates the Land Use Plan of the City of Richmond's Master Plan, incorporating amendments to the Master Plan since its original adoption in 2000, including new land use categories derived from the Downtown Plan (2008), and the Pulse Corridor Plan (2017).



Department of Planning & Development Review



Created November 2000
Updated September 2017