



RICHMOND RIVERFRONT *DOWNRIVER*  
HARGREAVES ASSOCIATES / CITY OF RICHMOND / 28 JUNE 2017

*PUBLIC MEETING*

*Riverfront updates  
Downriver recap  
Schematic progress  
Feedback*

RICHMOND RIVERFRONT **DOWNRIVER**

**PUBLIC MEETING**

*Riverfront updates  
Downriver recap  
Schematic progress  
Feedback*

*w/ VHB + Moffatt & Nichol*

RICHMOND RIVERFRONT *DOWNRIVER*

*PUBLIC MEETING*

*Riverfront updates*  
*Downriver recap*  
*Schematic progress*  
*Feedback*

RICHMOND RIVERFRONT *DOWNRIVER*

An aerial photograph of a dam on a river. The dam is a long, narrow structure with a blue metal walkway on top, supported by concrete piers. Water is flowing over the dam, creating white rapids. The river is surrounded by dense green trees. In the upper left, a highway bridge is visible. On the left bank, there are some stone structures and construction equipment. The text is overlaid on the image in white and blue.

**OPENED 2 DEC 2016**

**SUBSTANTIAL COMPLETION GRANTED  
SPRING 2017**

**RICHMOND RIVERFRONT *DOWNRIVER***

***T TYLER POTTERFIELD MEMORIAL BR UPDATE***

An aerial photograph of a landscaped riverfront area. A large concrete bridge with multiple piers spans across the top right of the image. Below the bridge, a paved path winds through a landscape of tall, golden-brown grasses and young green trees. To the left, a dense forest of mature green trees borders a paved walkway. In the background, a city skyline with various high-rise buildings is visible under a clear sky. The overall scene is bright and sunny, with shadows cast by the trees and bridge.

***FINAL PUNCLIST ITEMS***

**RICHMOND RIVERFRONT *DOWNRIVER***

***T TYLER POTTERFIELD MEMORIAL BR UPDATE***

A man with long dreadlocks, wearing a red jacket and dark pants, stands in a wooded area. He is looking towards a dirt embankment on the left. The background is filled with lush green trees and foliage. The scene appears to be a natural, somewhat overgrown area.

*SPRING 2017  
SITE RECON  
SURVEY UNDERWAY*

RICHMOND RIVERFRONT *DOWNRIVER*

*MISSING LINK UPDATE*

***AMPLE POTENTIAL***

**RICHMOND RIVERFRONT *DOWNRIVER***

***MISSING LINK UPDATE***



**CONSIDERABLE CHALLENGES**  
**TOPOGRAPHY**  
**RAILROAD**  
**RIVER**  
**FUNDING**



*ROTARY IN PROGRESS  
ASH ST CLOSED*



**KICKSTAND  
MAIN ST CONSTRUCTION LOGISTICS  
FISHERMAN UNIMPACTED**

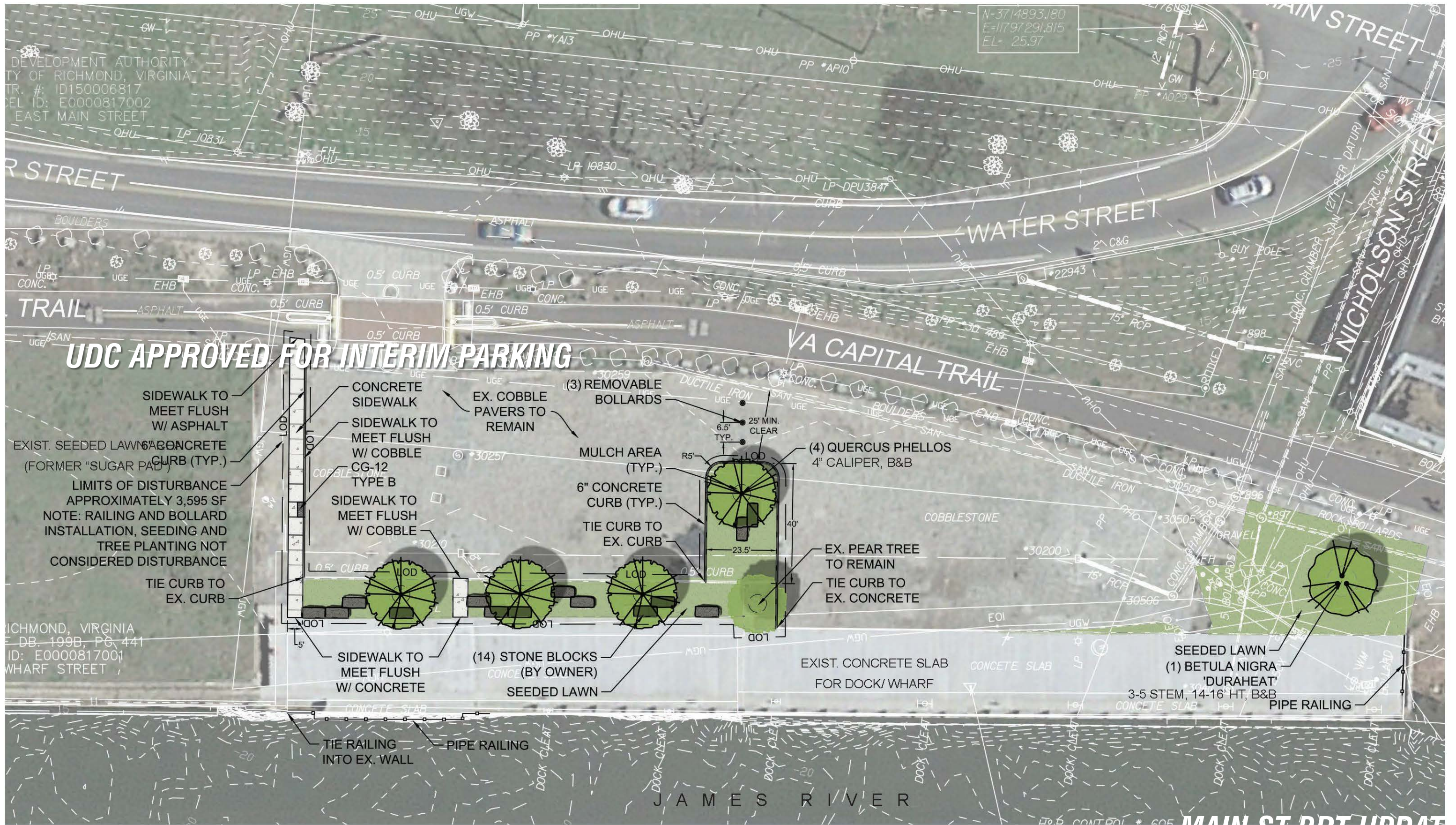
*WAREHOUSE CONCRETE REMOVED*



**RICHMOND RIVERFRONT** *DOWNRIVER*

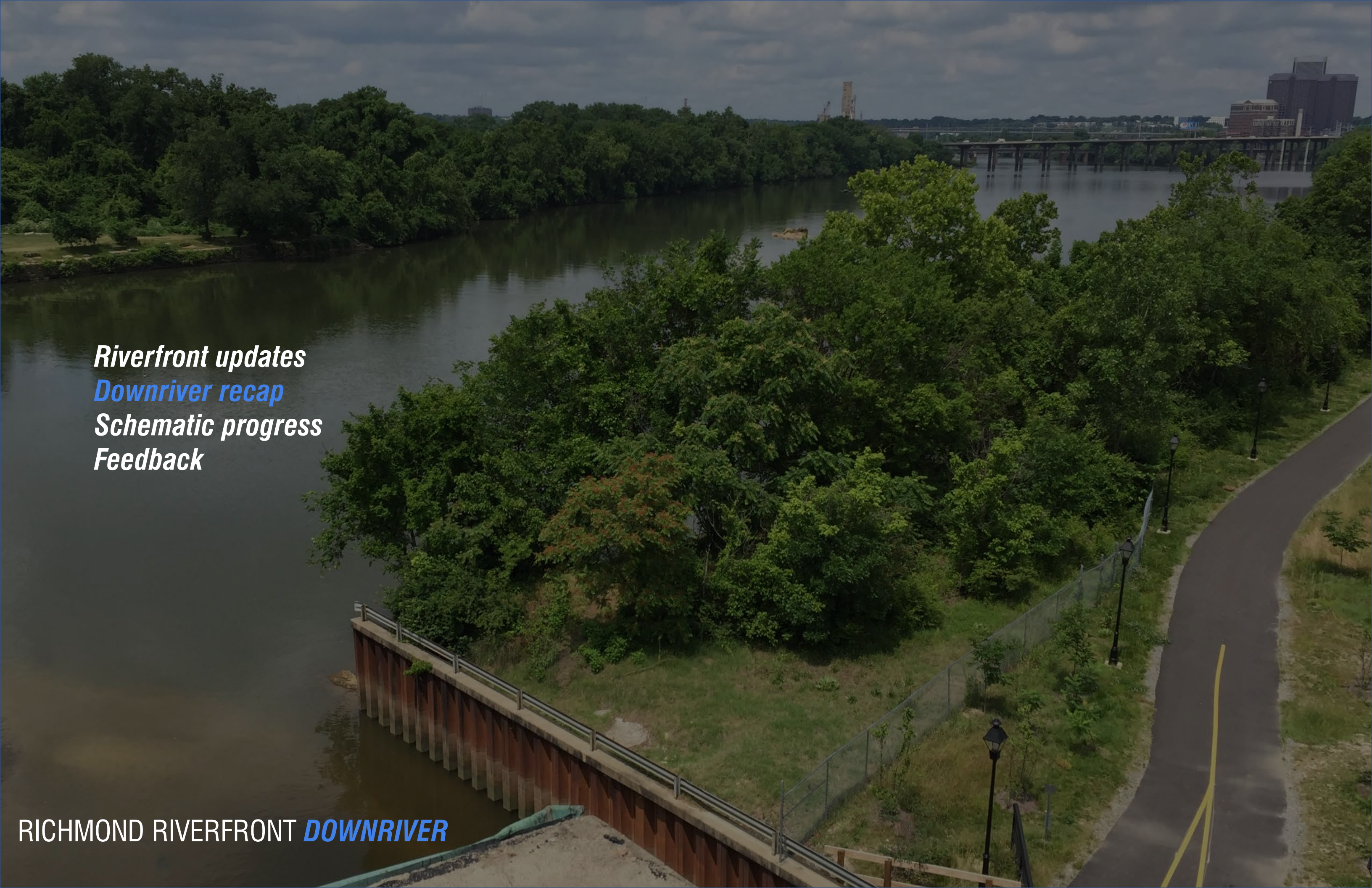
**INTERMEDIATE UPDATE**

**INTERIM WORK CONTINUES  
WHARF EDGE**



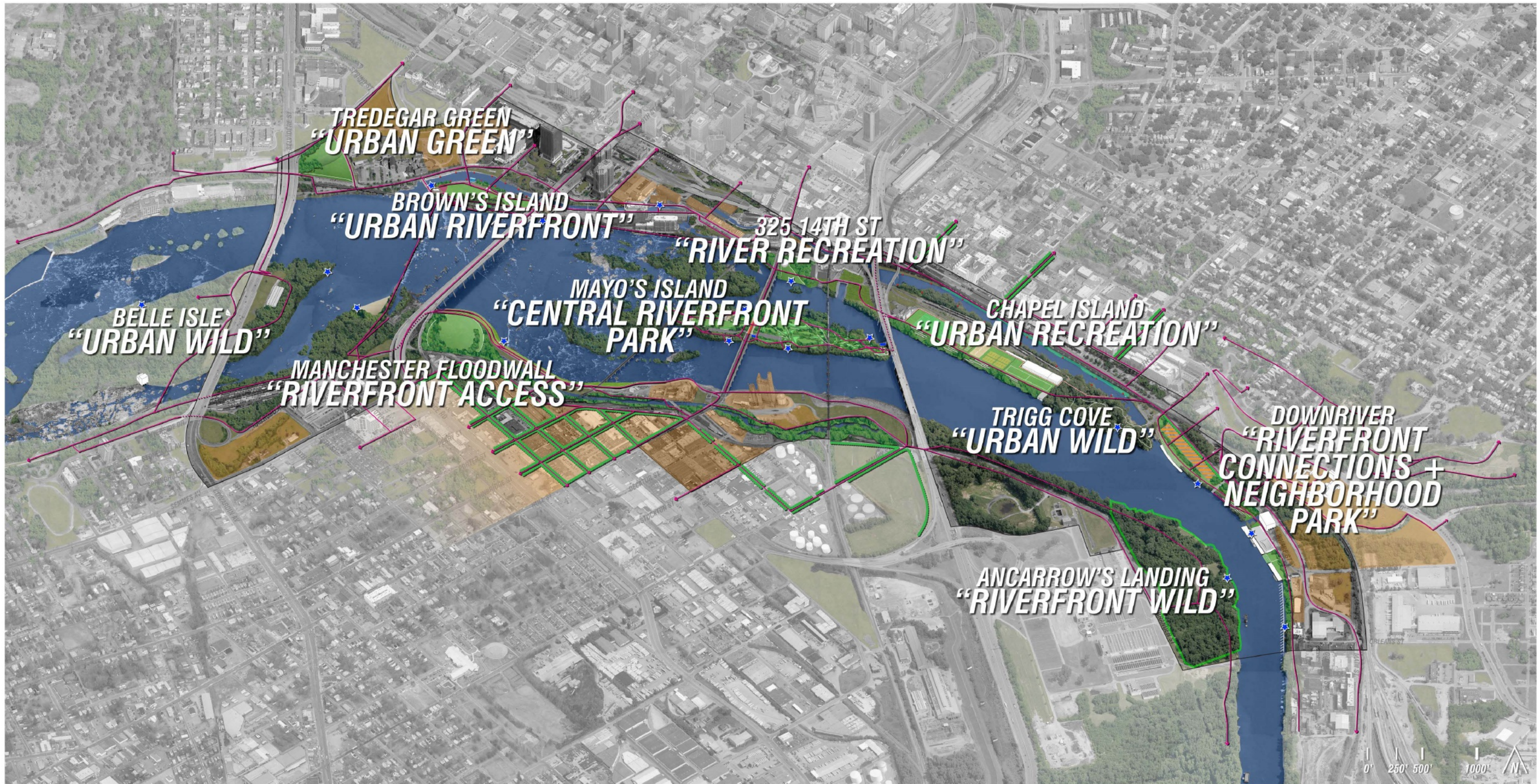
## INTERMEDIATE TERMINAL - PARKING LOT IMPROVEMENTS

SITE PLAN RENDERING

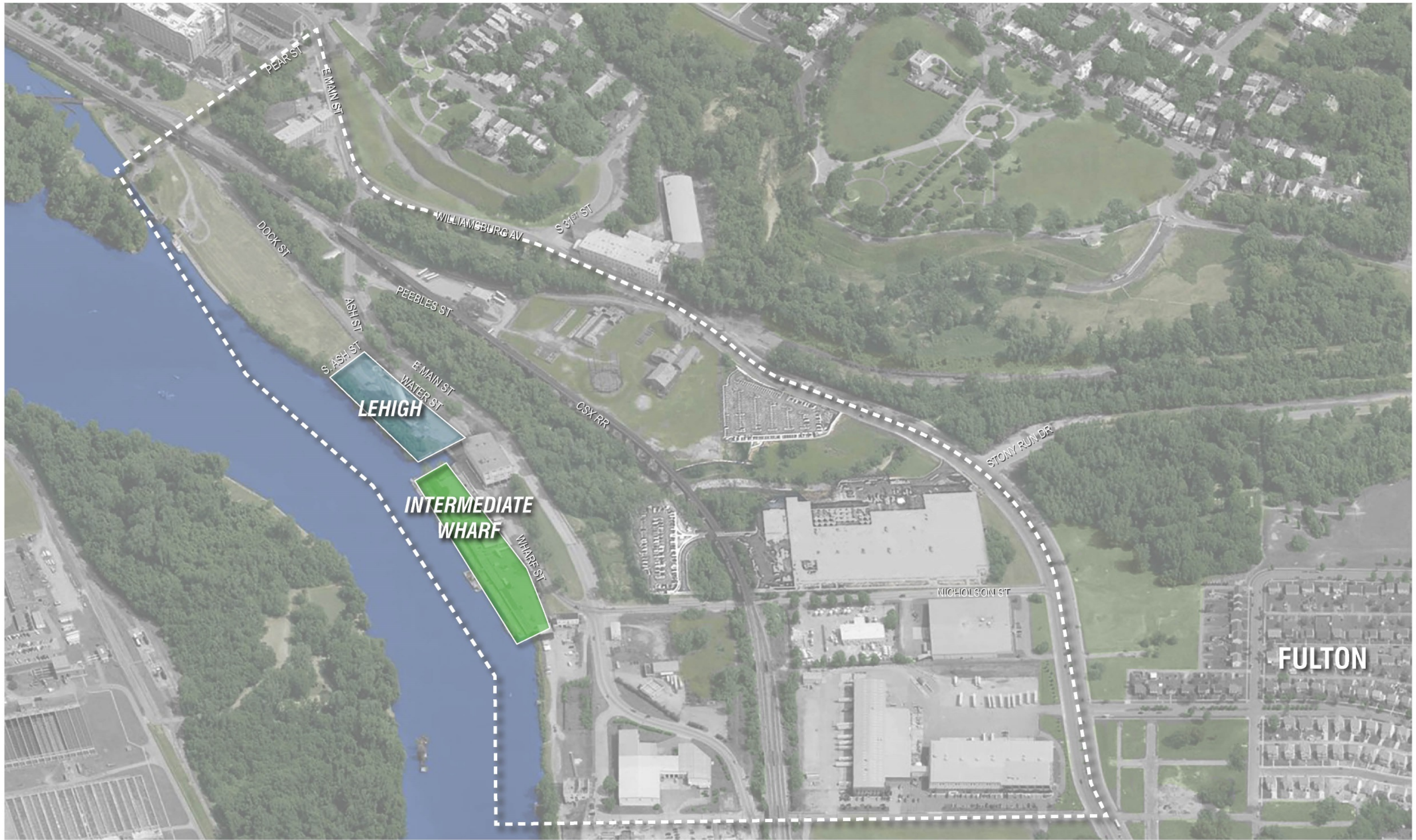


*Riverfront updates*  
*Downriver recap*  
*Schematic progress*  
*Feedback*

RICHMOND RIVERFRONT *DOWNRIVER*







RICHMOND RIVERFRONT *DOWNRIVER*

**CURRENT STUDY AREA**





# GREEN

## HARDSCAPE / SOFTSCAPE

CONCRETE VS. GREEN AT INTERMEDIATE (FLEXIBLE VS. REDUCED HARDSCAPE)

## STORMWATER MANAGEMENT

MORE VEGETATED, LESS PAVING, INCREASING THE CAPTURE OF RIVERFRONT STORMWATER

## PLANT SPECIES

NATIVE PLANT SPECIES AND LARGE SHADE TREES

# ***DEVELOPMENT***

## **VIEWSHED**

VIEW FROM LIBBY HILL, ACROSS LEHIGH TO ROCKETTS  
TOUCHING THE RIVER VISUALLY



# USES

## **PASSIVE VS. ACTIVE**

ACTIVE USES ARE CHALLENGING DUE TO SPACE CONSTRAINTS AND CLOSE PROXIMITY TO THE WATER'S EDGE

## **FURNISHINGS**

RESTROOMS, FISH CLEANING STATIONS, ADEQUATE LIGHTING

## **SUPPORT FISHERMAN**

SEASONALLY AND DAILY, AS AN INCLUSIVE USER BASE

## **PICNICKING**

## **WATER TAXI**

ANTICIPATE FUTURE WATER TAXI TAKING PEOPLE ACROSS THE RIVER

## **BOATHOUSE**

ROCKETTS AND ANCARROW'S ARE MORE LIKELY LOCATIONS

An aerial photograph of a road with a bridge crossing a river. The road has double yellow lines and a white line. A white car is on the road, and a red car is on the bridge. The background is filled with dense green trees. The text is overlaid on the image.

# ***CIRCULATION & CONNECTIONS***

## **COMMUTING**

CHANGED TRAVEL PATTERNS WITH ROAD RECONFIGURATION

## **WILLIAMSBURG AVE**

NEED TO RECONFIGURE / ATTENUATE SPEED / FLOW  
IMPROVE CONNECTIONS TO CHIMBORAZO AND HISTORIC FULTON

## **PARKING**

MINIMIZE PARKING SO IT IS NOT THE DRIVER OF THE DESIGN;  
FOCUS ON SHARED-USE PARKING

## **GILLIES CREEK GREENWAY**

CONNECTIVE COMPONENT NEEDED TO REACH MORE NEIGHBORHOODS  
BEYOND THE RIVER BY FOOT AND BIKE



# ***EDUCATIONAL & INTERPRETIVE***

## **EDUCATIONAL**

INCLUDE EDUCATIONAL COMPONENTS, AS OPPOSED TO JUST RECREATIONAL; INTERPRET WHY THIS IS IMPORTANT TO SHAPE OUR ENVIRONMENT AS PART OF THE CONTINUUM OF RICHMOND'S ADAPTATION OF THE RIVERFRONT

## **PHYSICAL CONNECTIONS**

CONNECTION TO THE RIVER IS NECESSARY SO THAT PEOPLE ARE COMPELLED TO CARE ABOUT THE JAMES (HISTORY AND FUTURE) AND WORK TO PROTECT AND SUPPORT IT

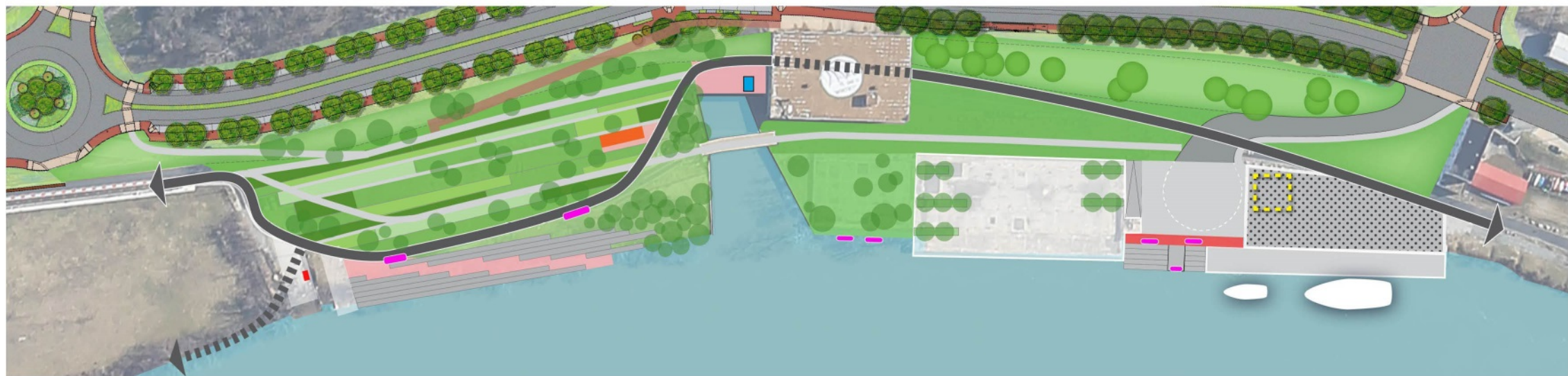
**A. ACTIVE**



**B. NATIVE**

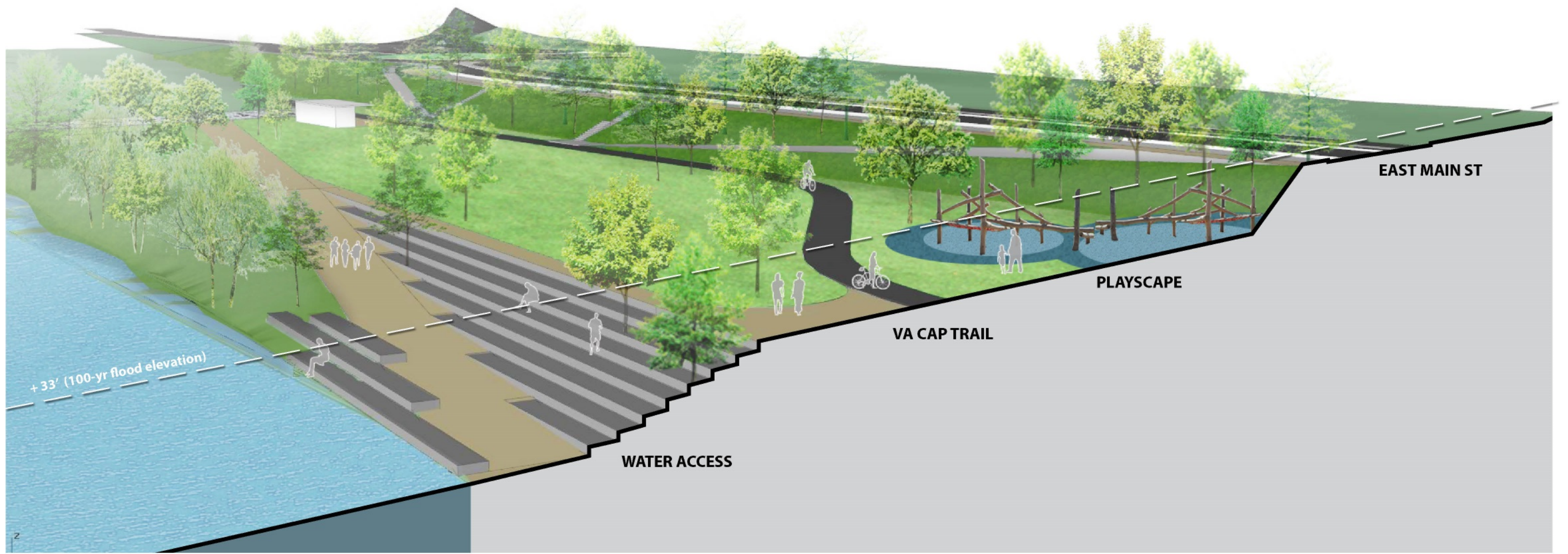


**C. CULTURE**

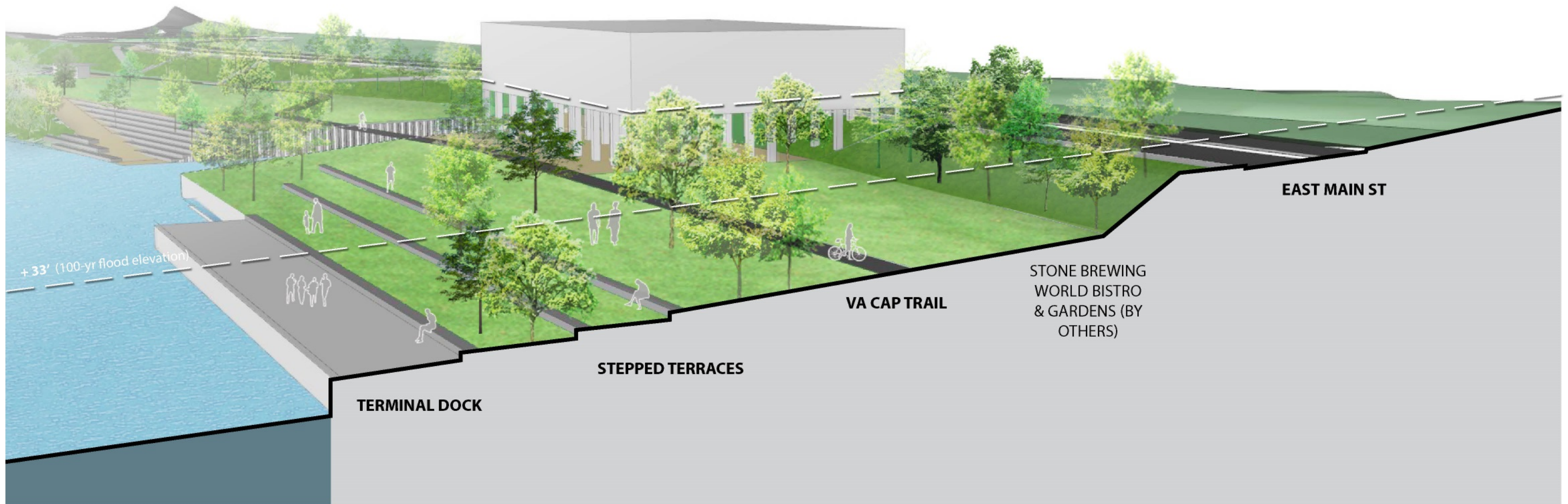




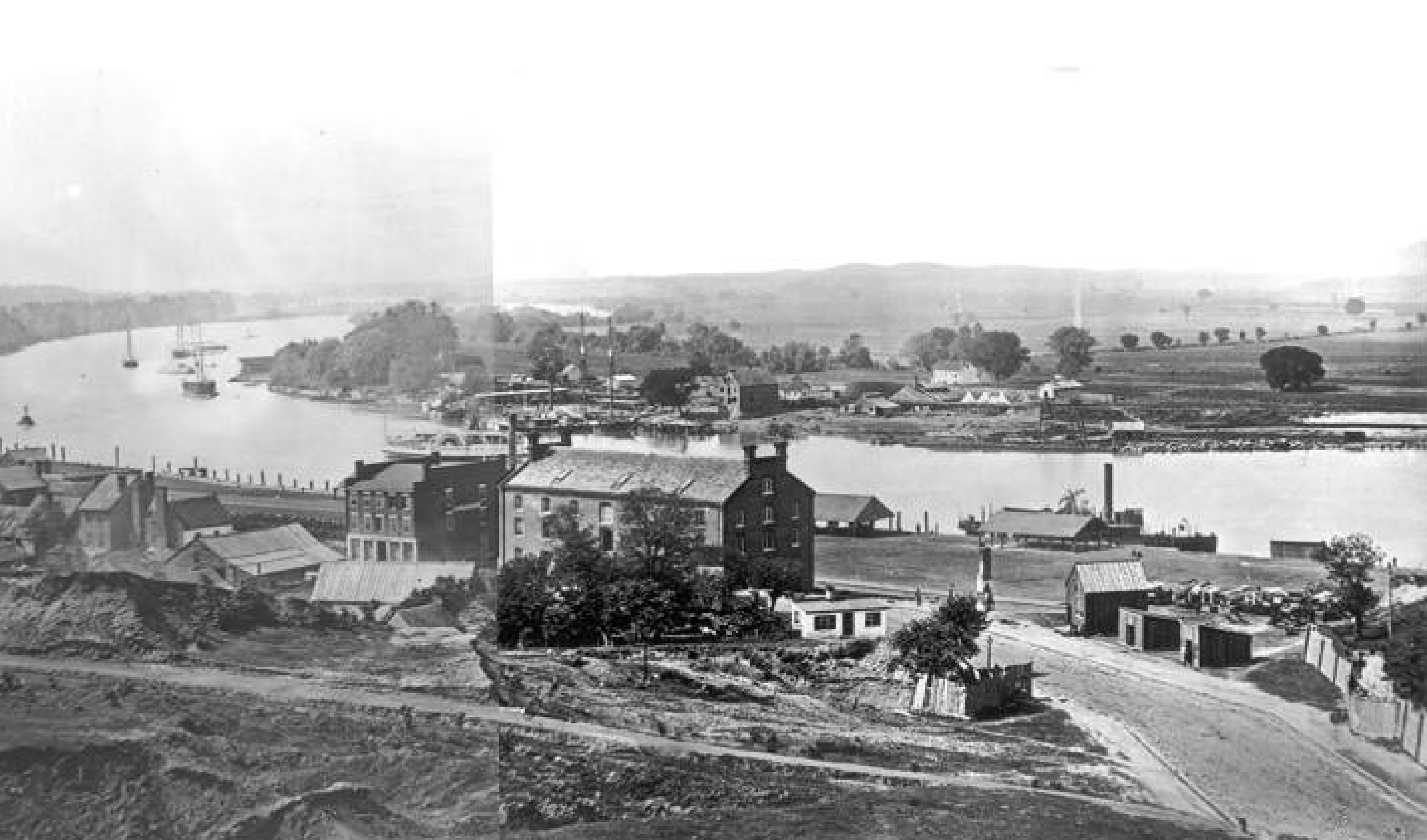




**DOWNRIVER** SECTION 1 - LEHIGH



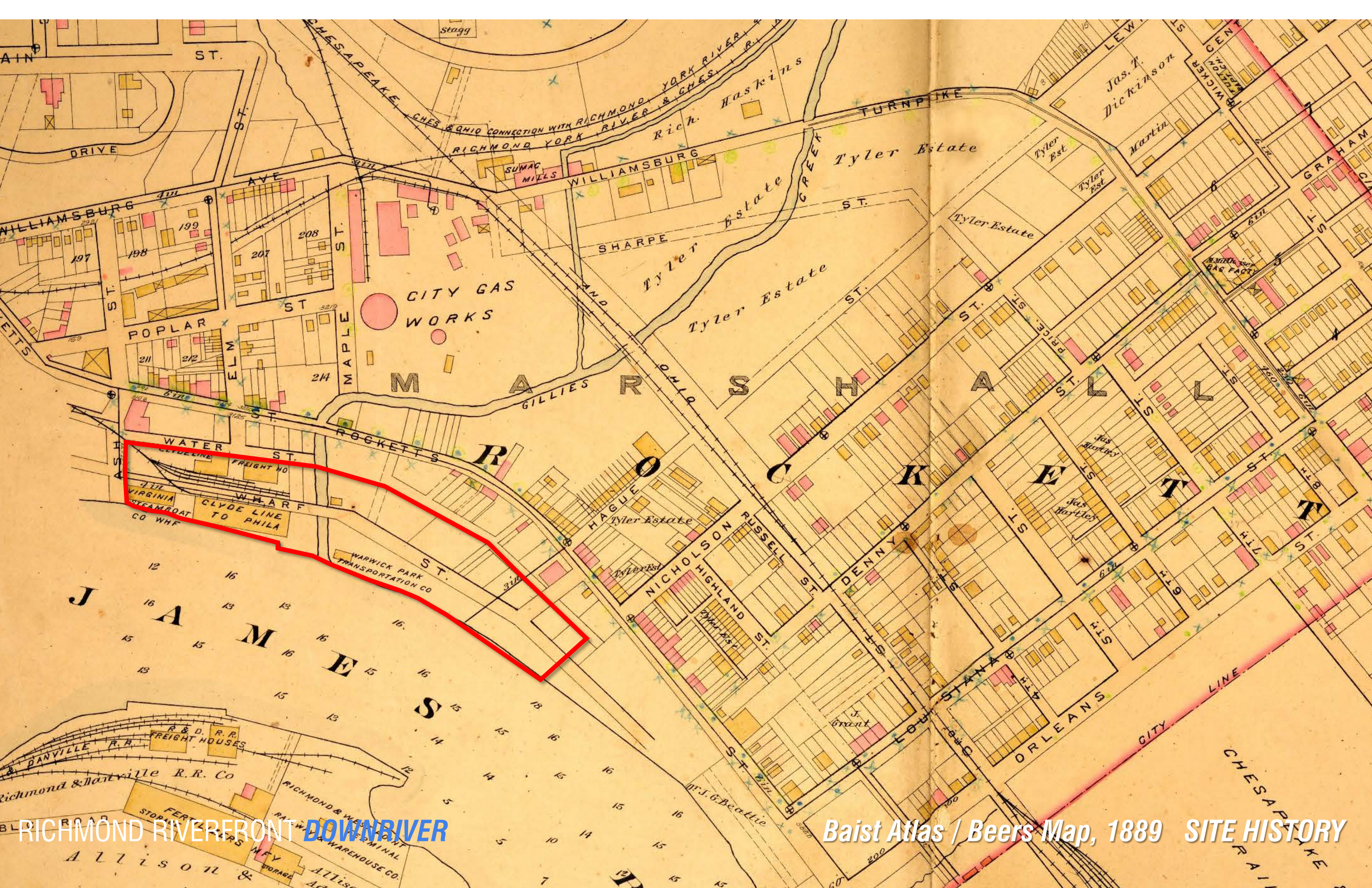
**DOWNRIVER** SECTION 2 - INTERMEDIATE



RICHMOND RIVERFRONT *DOWNRIVER*

*Rocketts, circa 1864* SITE HISTORY





CITY GAS WORKS

Tyler Estate

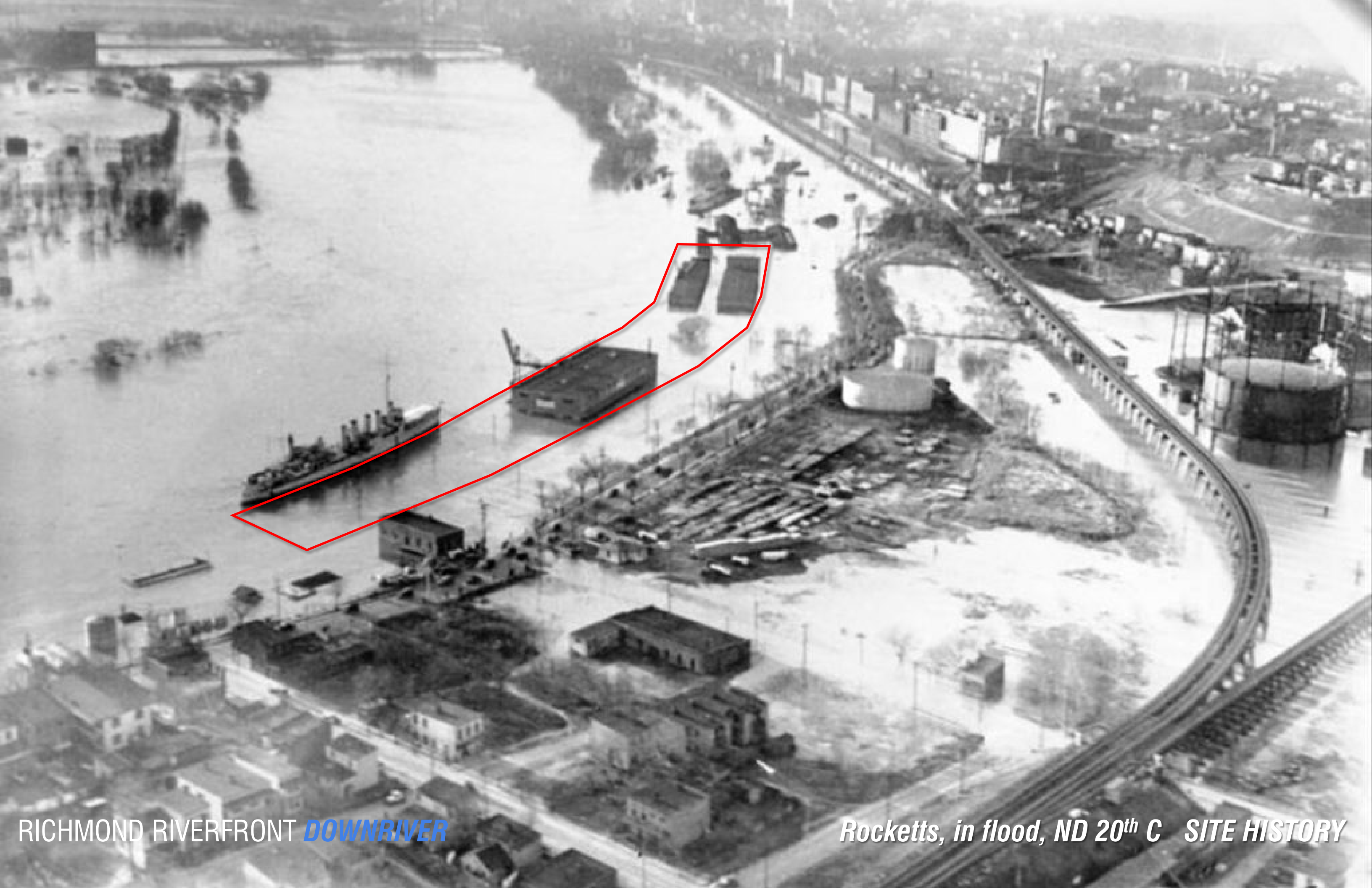
R O C K E T T S

J A M E S

ORLEANS

RICHMOND RIVERFRONT DOWNRIVER

Baist Atlas / Beers Map, 1889 SITE HISTORY



RICHMOND RIVERFRONT *DOWNRIVER*

*Rocketts, in flood, ND 20<sup>th</sup> C* SITE HISTORY

307



POWHATAN



MONACANS



Powhatan Place Names, c1606 John Smith Map SITE HISTORY

RICHMOND RIVERFRONT DOWNRIVER





*Oppidum Pomeiooc, NC c1590*

RICHMOND RIVERFRONT **DOWNRIVER**



*Village of Secoton on Roanoke Island, c1609*

*Representative native settlements* **SITE HISTORY**



*CHATTANOOGA*

RICHMOND RIVERFRONT *DOWNRIVER*

*SITE HISTORY*



*CHATTANOOGA*

JO OJO SV SME  
GUWI-S-GU-WI GA-DO GA-LU-GV  
ROSS'S LANDING



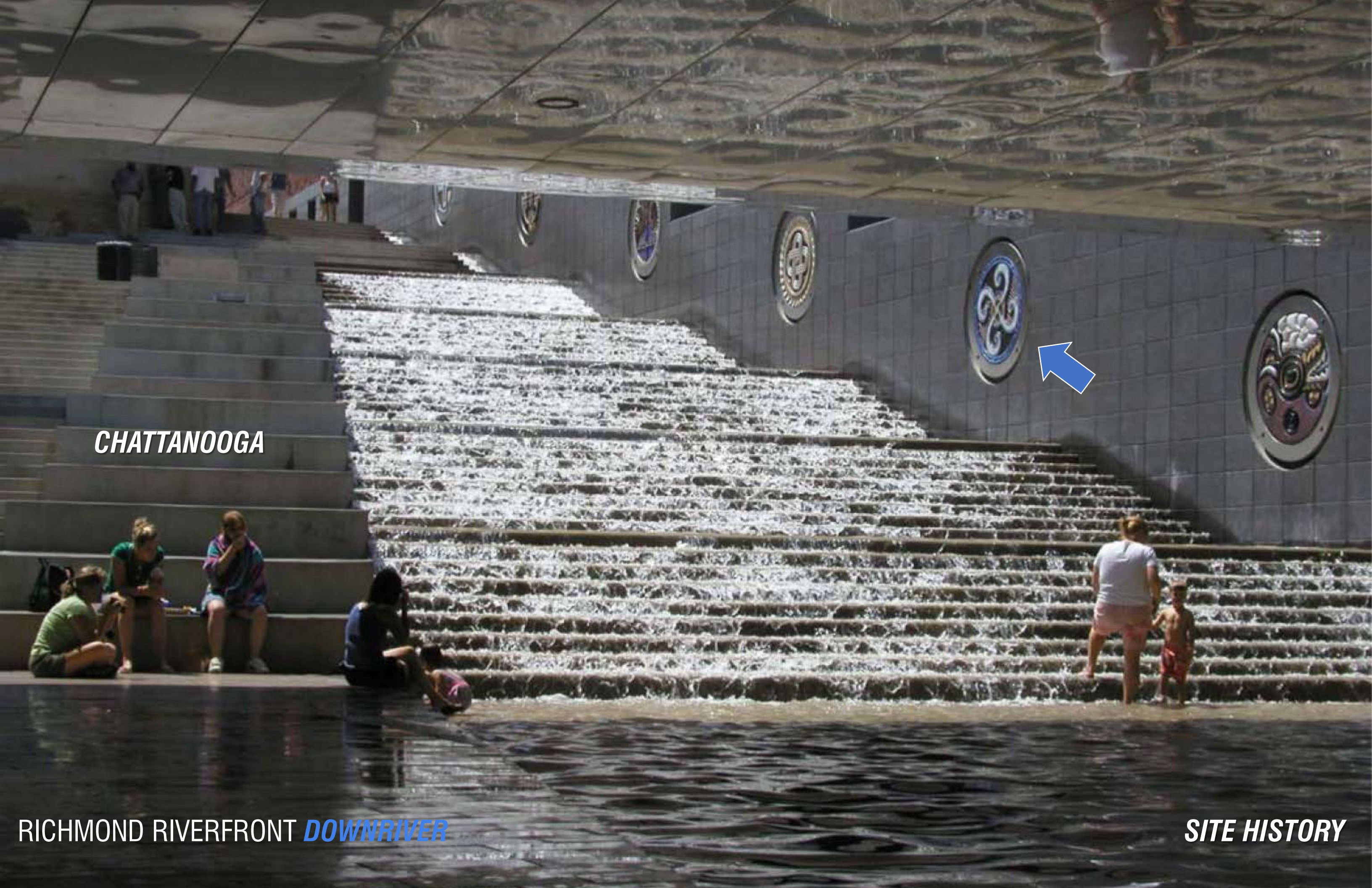
RICHMOND RIVERFRONT *DOWNRIVER*

*SITE HISTORY*



**CHATTANOOGA**





**CHATTANOOGA**



**RICHMOND RIVERFRONT *DOWNRIVER***

***SITE HISTORY***

*Riverfront updates*  
*Downriver recap*  
*Schematic progress*  
*Feedback*

RICHMOND RIVERFRONT *DOWNRIVER*



POTENTIAL REDEVELOPMENT AREA

STONE BREWING WORLD  
BISTRO & GARDENS

VA CAP TRAIL

VA CAP TRAIL

LEHIGH

INTERMEDIATE

JAMES RIVER



E MAIN STREET

ADA CONNECTION TO E MAIN ST AND GILLIES CREEK GREENWAY

VA CAPITAL TRAIL

GILLIES PLAZA

PLAYSCAPE

GILLIES CREEK

KICKSTAND

MOWN LAWN

PICNIC TABLES

WATER ACCESS

ASH STREET

SEASONALLY MOWN LAWN

EXISTING AND RESTORED RIPARIAN VEGETATION

REFURNISHED FISHING PIERS & FISH CLEANING STATION

JAMES RIVER

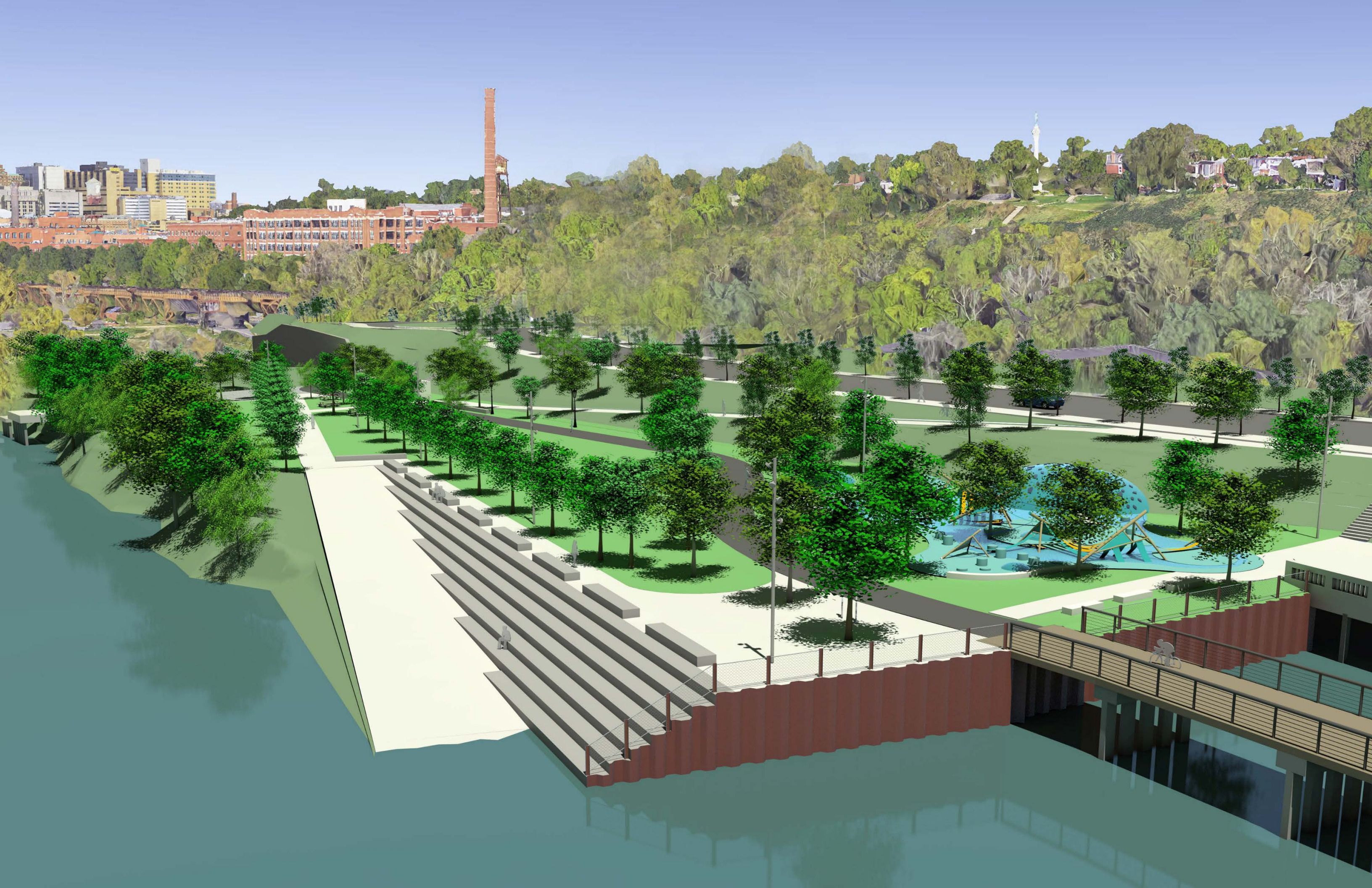
1" = 50'

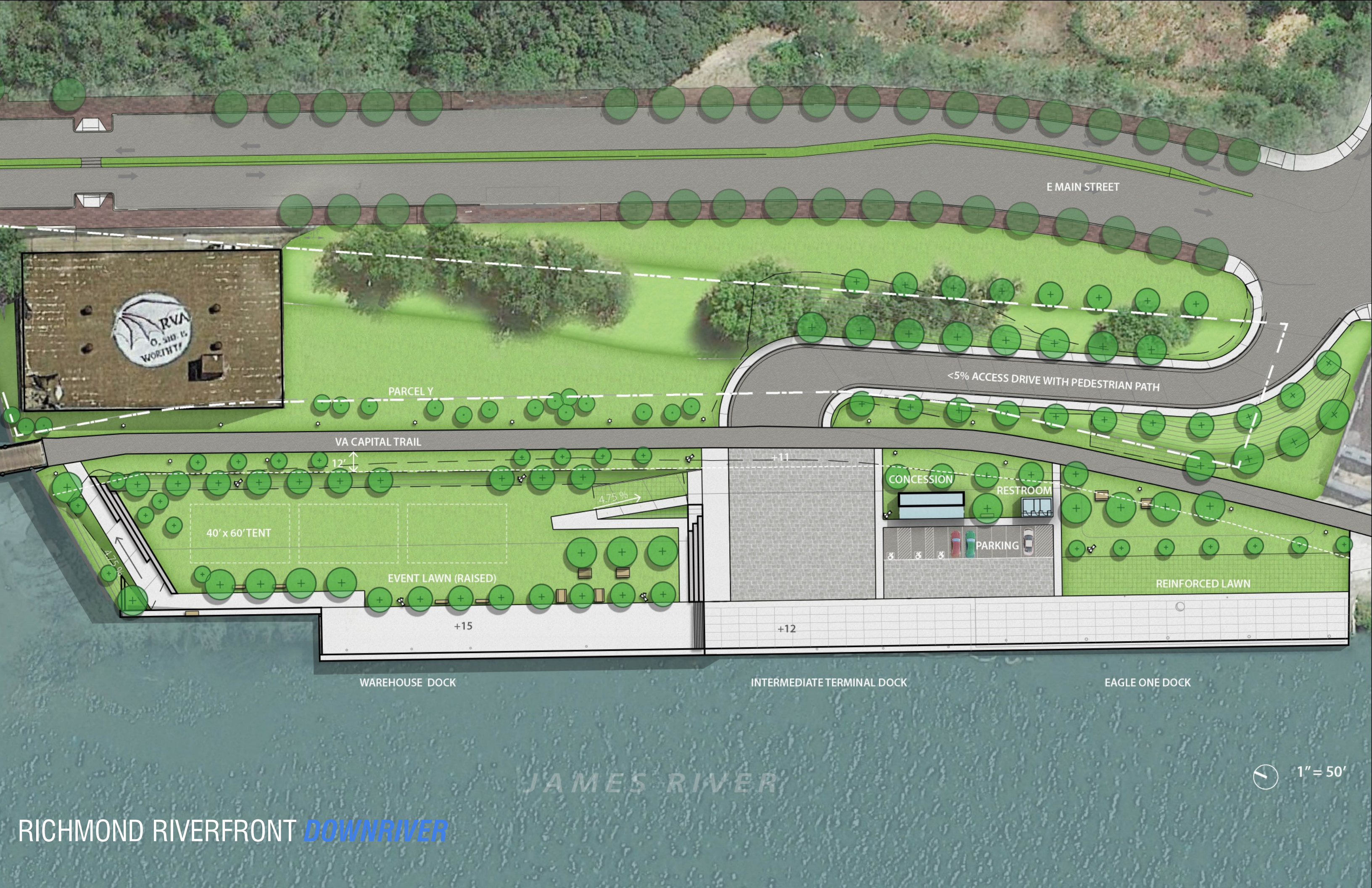












E MAIN STREET

PARCEL Y

VA CAPITAL TRAIL

<5% ACCESS DRIVE WITH PEDESTRIAN PATH

40' x 60' TENT

EVENT LAWN (RAISED)

CONCESSION

RESTROOM

PARKING

REINFORCED LAWN

WAREHOUSE DOCK

INTERMEDIATE TERMINAL DOCK

EAGLE ONE DOCK

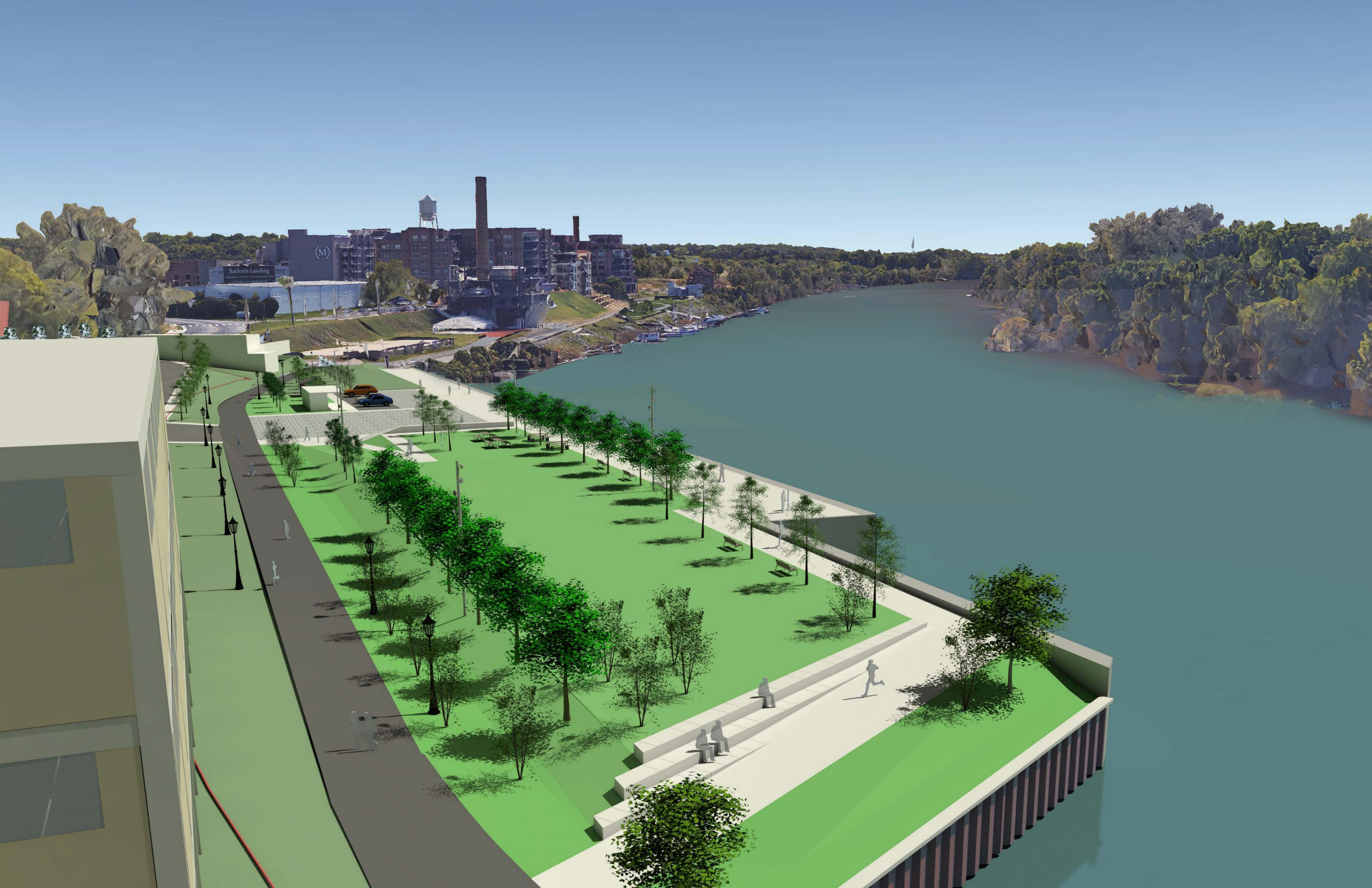
JAMES RIVER

1" = 50'

RICHMOND RIVERFRONT **DOWNRIVER**











*Riverfront updates*

*Downriver recap*

*Schematic progress*

*Feedback*

*Planning Commission in July*

*Schematic resolution in August*

*MP Amendment @ Council introduction in September*

*Adoption*

**RICHMOND RIVERFRONT *DOWNRIVER***

*Riverfront updates*  
*Downriver recap*  
*Schematic progress*  
*Feedback*

**END**

**RICHMOND RIVERFRONT *DOWNRIVER***