



Stantec Consulting Services Inc.
801 Jones Franklin Road
Suite 300
Raleigh, NC 27606
Tel. (919) 851-6866
Fax. (919) 851-7024
www.stantec.com

Stantec Consulting Services Inc.
10800 Midlothian Turnpike
Suite 310
Richmond, VA 23235
Tel. (804) 897-6309
Fax. (704) 897-6314
www.stantec.com

Stantec Consulting Services Inc.
4500 Daly Drive
Suite 100
Chantilly, VA 20151
Tel. (703) 263-1220
Fax. (703) 263-1221
www.stantec.com

CITY OF RICHMOND, VIRGINIA

DEPARTMENT OF PUBLIC WORKS

ENGINEERING & TECHNICAL SERVICES



FOREST HILL AVENUE IMPROVEMENT PROJECT

PROJECT NO. U-000-127-155, PE-101, R-201, C-501

FROM: HATHAWAY ROAD TO: POWHITE PARKWAY

SEE SHEET 1A FOR INDEX OF SHEETS

CITY OF RICHMOND
DEPARTMENT OF PUBLIC WORKS
RICHMOND, VIRGINIA
DRAWING #: 0-28520
CIP#: 040-291-8950
UPC#: 19036

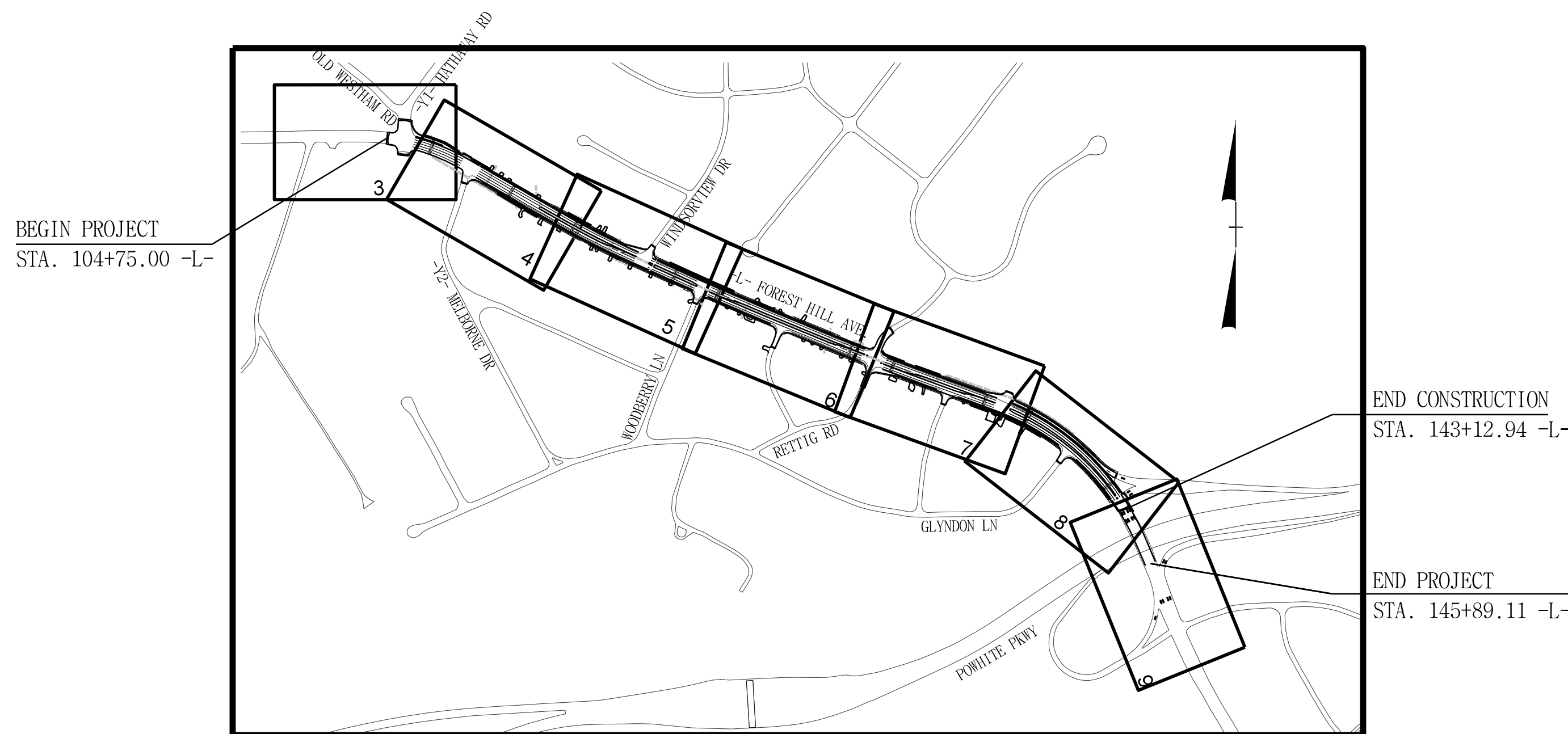
THE CONTRACTOR SHALL WORK ONLY IN THE AREA DEFINED IN SCOPE OF WORK ON EVERY PLAN SHEET. THE WORK MAY EXTEND OR BE REDUCED DEPENDING UPON FIELD CONDITIONS AND WITH THE PRIOR APPROVAL OF ENGINEER.

DESIGN FEATURES RELATING TO CONSTRUCTION OR TO REGULATION AND CONTROL OF TRAFFIC MAY BE SUBJECT TO CHANGE AS DEEMED NECESSARY BY THE DEPARTMENT.

THIS PROJECT IS TO BE CONSTRUCTED IN ACCORDANCE WITH THE VDOT'S 2007 ROAD AND BRIDGE SPECIFICATIONS, 2008 ROAD AND BRIDGE STANDARDS, 2005 WORK AREA PROTECTION MANUAL, 2003 MUTCD AND AS AMENDED BY THE CONTRACT PROVISIONS AND THE COMPLETE ELECTRONIC .PDF VERSION OF THE PLAN ASSEMBLY.

NO ADDITIONAL RIGHT OF WAY REQUIRED

THE ORIGINAL APPROVED TITLE SHEET, INCLUDING ORIGINAL SIGNATURES, ARE FILED IN THE CITY OF RICHMOND, DEPARTMENT OF PUBLIC WORKS OFFICE.



LOCATION MAP & PLAN SHEET LAYOUT



MAY 2015
IN-PROGRESS FINAL PLANS

THESE PLANS ARE UNFINISHED AND ARE NOT TO BE USED FOR ANY TYPE OF CONSTRUCTION

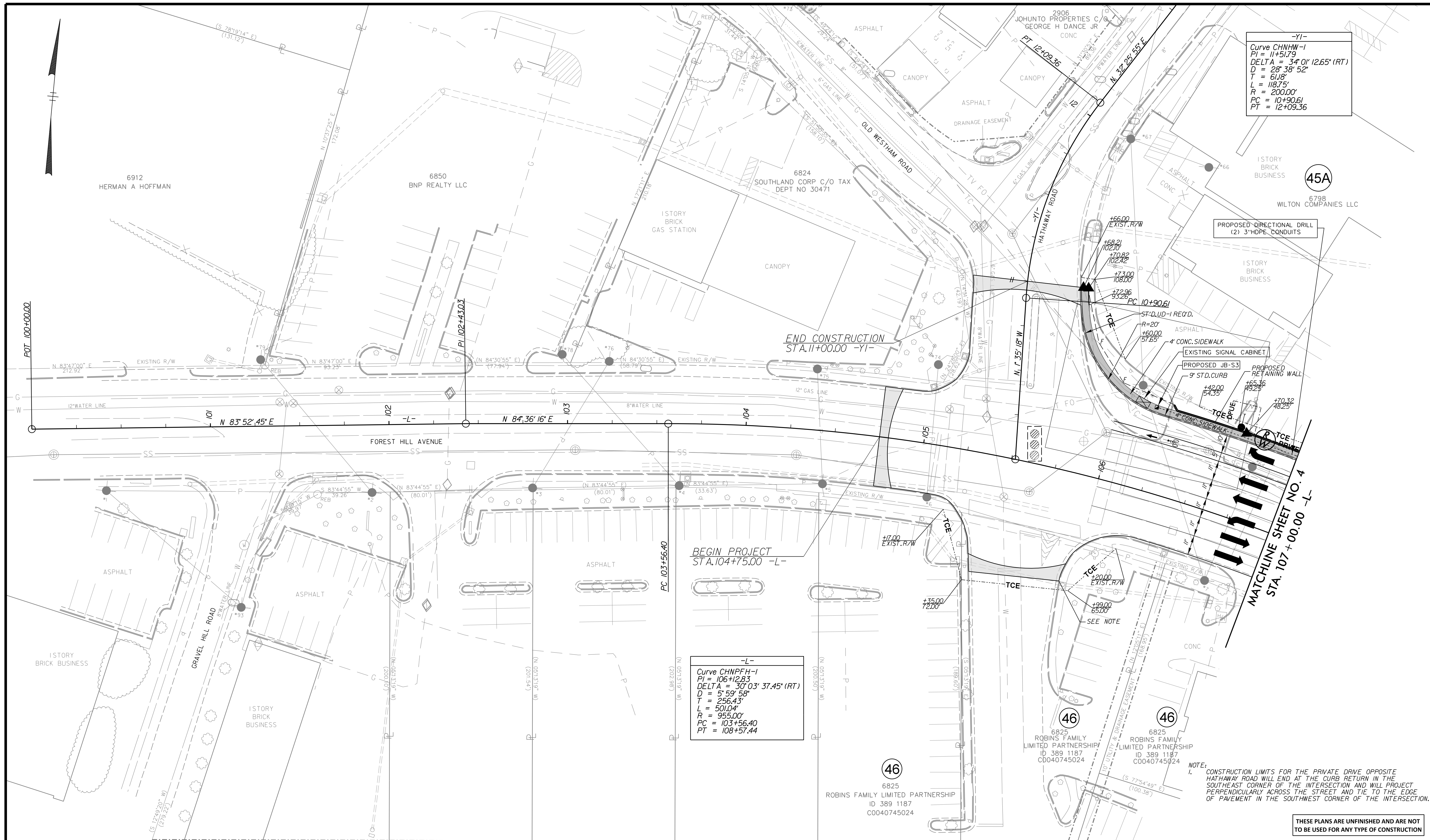
FHWA REGION	STATE	FEDERAL PROJECT NUMBER	STATE PROJECT NUMBER
	VA	STP-5127(543), PE-101 STP-5A27(254), R-201	U-000-127-155, PE-105

FUNCTIONAL CLASSIFICATION AND TRAFFIC DATA	
Urban Minor Arterial Level to Rolling 35 MPH DESIGN SPEED	
FROM:	HATHAWAY ROAD
TO:	POWHITE PARKWAY
ADT (2009)	33,200
ADT (2030)	44,400
DHV =	4087
D%	55-45
T%	5
V (MPH) *See Plan and Profile Sheets for Hor. and Vert. Curve Design Speeds	

CITY OF RICHMOND	
APPROVED FOR RIGHT OF WAY	
DATE	SURVEYS SUPERINTENDANT
DATE	PROJECT MANAGER
DATE	MAINTENANCE ENGINEER
DATE	CITY TRAFFIC ENGINEER
DATE	CAPITAL PROJECTS ADMINISTRATOR
DATE	CITY ENGINEER
DATE	DIRECTOR OF PUBLIC WORKS

CITY OF RICHMOND	
APPROVED FOR CONSTRUCTION	
DATE	SURVEYS SUPERINTENDANT
DATE	PROJECT MANAGER
DATE	MAINTENANCE ENGINEER
DATE	CITY TRAFFIC ENGINEER
DATE	CAPITAL PROJECTS ADMINISTRATOR
DATE	CITY ENGINEER
DATE	DIRECTOR OF PUBLIC WORKS

REVISIONS		
NO.	DATE	COMMENTS:



-YI-
 Curve CHNHW-1
 PI = 11+51.79
 DELTA = 34° 01' 12.65" (RT)
 D = 28° 38' 52"
 T = 61.08'
 L = 118.75'
 R = 200.00'
 PC = 10+90.61
 PT = 12+09.36

-L-
 Curve CHNPFH-1
 PI = 106+12.83
 DELTA = 30° 03' 37.45" (RT)
 D = 5° 59' 58"
 T = 256.43'
 L = 501.04'
 R = 955.00'
 PC = 103+56.40
 PT = 108+57.44

NOTE:
 1. CONSTRUCTION LIMITS FOR THE PRIVATE DRIVE OPPOSITE HATHAMWAY ROAD WILL END AT THE CURB RETURN IN THE SOUTHEAST CORNER OF THE INTERSECTION AND WILL PROJECT PERPENDICULARLY ACROSS THE STREET AND TIE TO THE EDGE OF PAVEMENT IN THE SOUTHWEST CORNER OF THE INTERSECTION.

THESE PLANS ARE UNFINISHED AND ARE NOT TO BE USED FOR ANY TYPE OF CONSTRUCTION

FOREST HILL AVENUE IMPROVEMENT PROJECT



Technical	Administrative
Surveys Superintendent	Capital Project Administrator
Project Engineer	Deputy Director for Transportation / Public Works
Maintenance Engineer	Director of Public Works
City Traffic Engineer	

DEPARTMENT OF PUBLIC WORKS
 RICHMOND, VIRGINIA

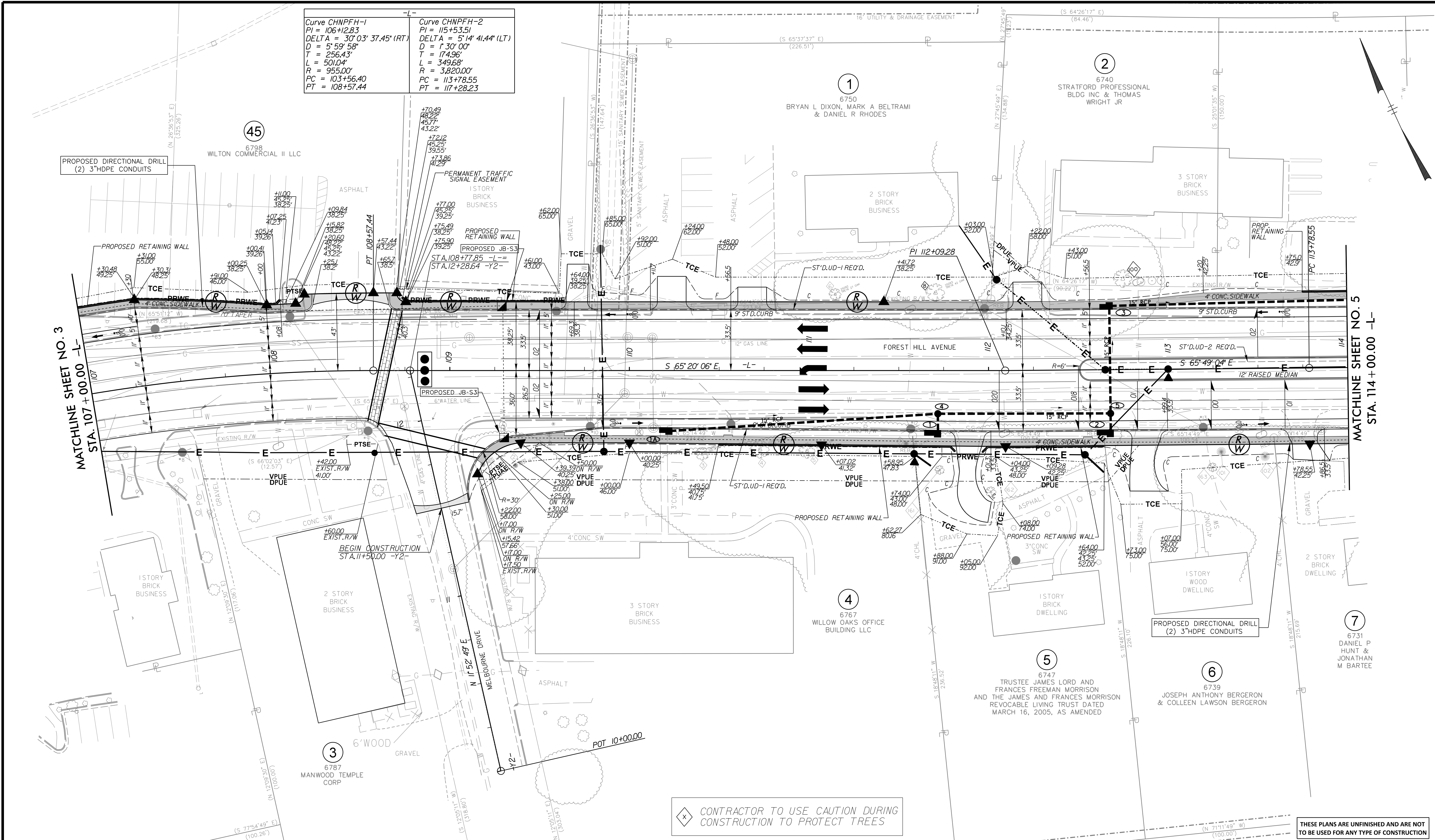
PLAN VIEW

DRAWING #: 0-28520 CIP #: 040-291-8950	DESIGN BY: _____ CHECKED BY: _____	REVIEWED BY: _____	FIELD NOTES	SCALE: HORIZ. 1"=25' VERT. 1"=25'	DATE: 12/13/2016	DRAWING FILE NAME: 171000608_rdy_psh_3.dgn	SHEET NO. 3
---	---------------------------------------	--------------------	-------------	---	------------------	--	-------------

5/FILES

Curve CHNPFH-1
 PI = 106+12.83
 DELTA = 30°03' 37.45" (RT)
 D = 5' 59' 58"
 T = 256.43'
 L = 501.04'
 R = 955.00'
 PC = 103+56.40
 PT = 108+57.44

Curve CHNPFH-2
 PI = 115+53.51
 DELTA = 5°14' 41.44" (LT)
 D = 1' 30' 00"
 T = 174.96'
 L = 349.68'
 R = 3,820.00'
 PC = 113+78.55
 PT = 117+28.23



PROPOSED DIRECTIONAL DRILL
 (2) 3"HDPE CONDUITS

MATCHLINE SHEET NO. 3
 STA. 107+00.00 -L-

MATCHLINE SHEET NO. 5
 STA. 114+00.00 -L-

⊠ CONTRACTOR TO USE CAUTION DURING CONSTRUCTION TO PROTECT TREES

THESE PLANS ARE UNFINISHED AND ARE NOT TO BE USED FOR ANY TYPE OF CONSTRUCTION

FOREST HILL AVENUE IMPROVEMENT PROJECT



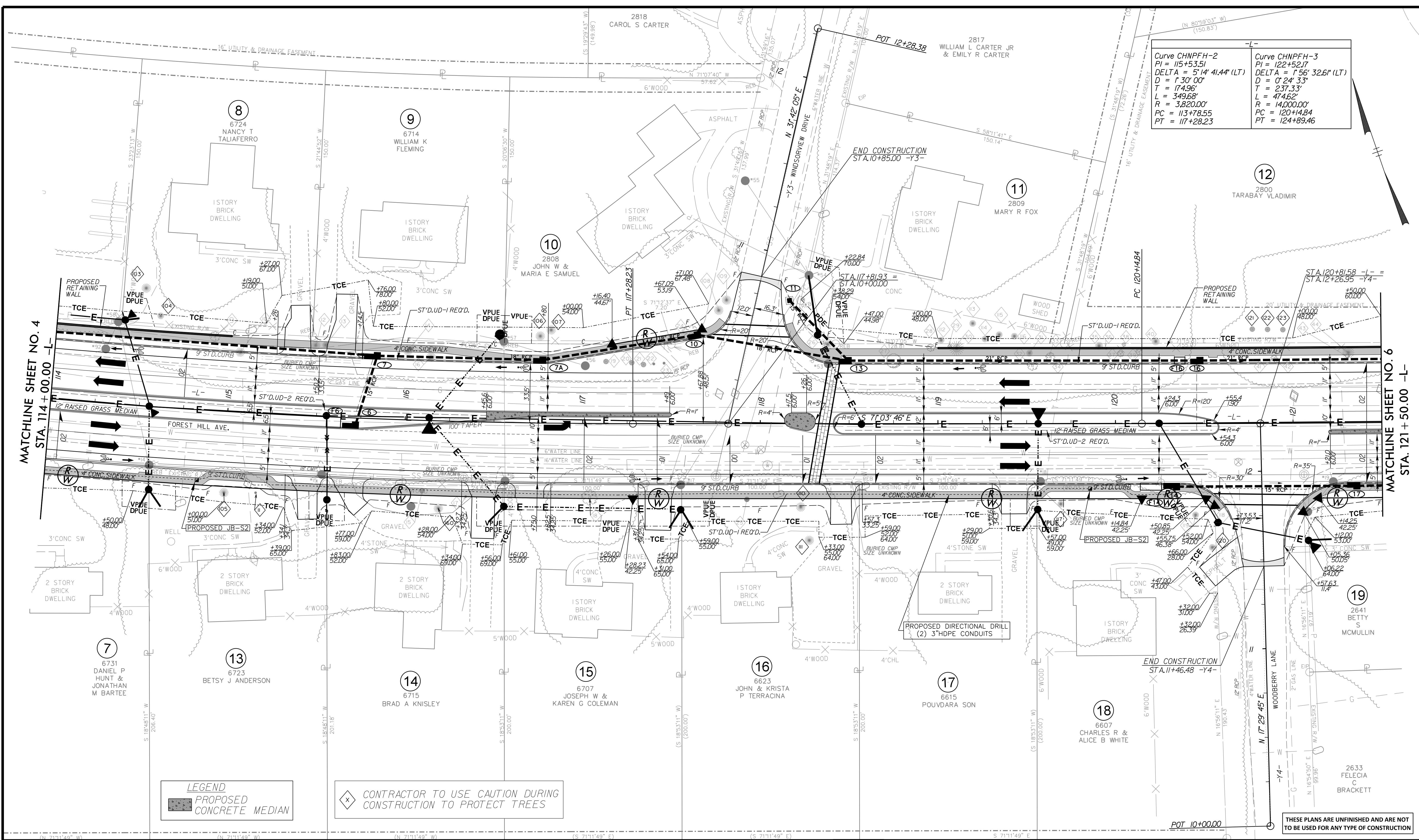
Technical	Administrative
Surveys Superintendent	Capital Project Administrator
Project Engineer	Deputy Director for Transportation / Public Works
Maintenance Engineer	Director of Public Works
City Traffic Engineer	

DEPARTMENT OF PUBLIC WORKS
 RICHMOND, VIRGINIA

DRAWING #: 0-28520 CIP #: 040-291-8950	DESIGN BY: _____ CHECKED BY: _____	REVIEWED BY: _____	FIELD NOTES	SCALE: HORIZ. 1"=25' VERT. 1"=25'	DATE: 12/13/2016	DRAWING FILE NAME: 171000608_rdy_psh_4.dgn	SHEET NO. 4
---	---------------------------------------	--------------------	-------------	---	---------------------	---	----------------

PLAN VIEW

SF:ELLS



Curve CHNPFH-2 PI = 115+53.51 DELTA = 5'14\"/>	Curve CHNPFH-3 PI = 122+52.17 DELTA = 1'56\"/>
--	--

LEGEND
 PROPOSED CONCRETE MEDIAN

CONTRACTOR TO USE CAUTION DURING CONSTRUCTION TO PROTECT TREES

THESE PLANS ARE UNFINISHED AND ARE NOT TO BE USED FOR ANY TYPE OF CONSTRUCTION

FOREST HILL AVENUE IMPROVEMENT PROJECT



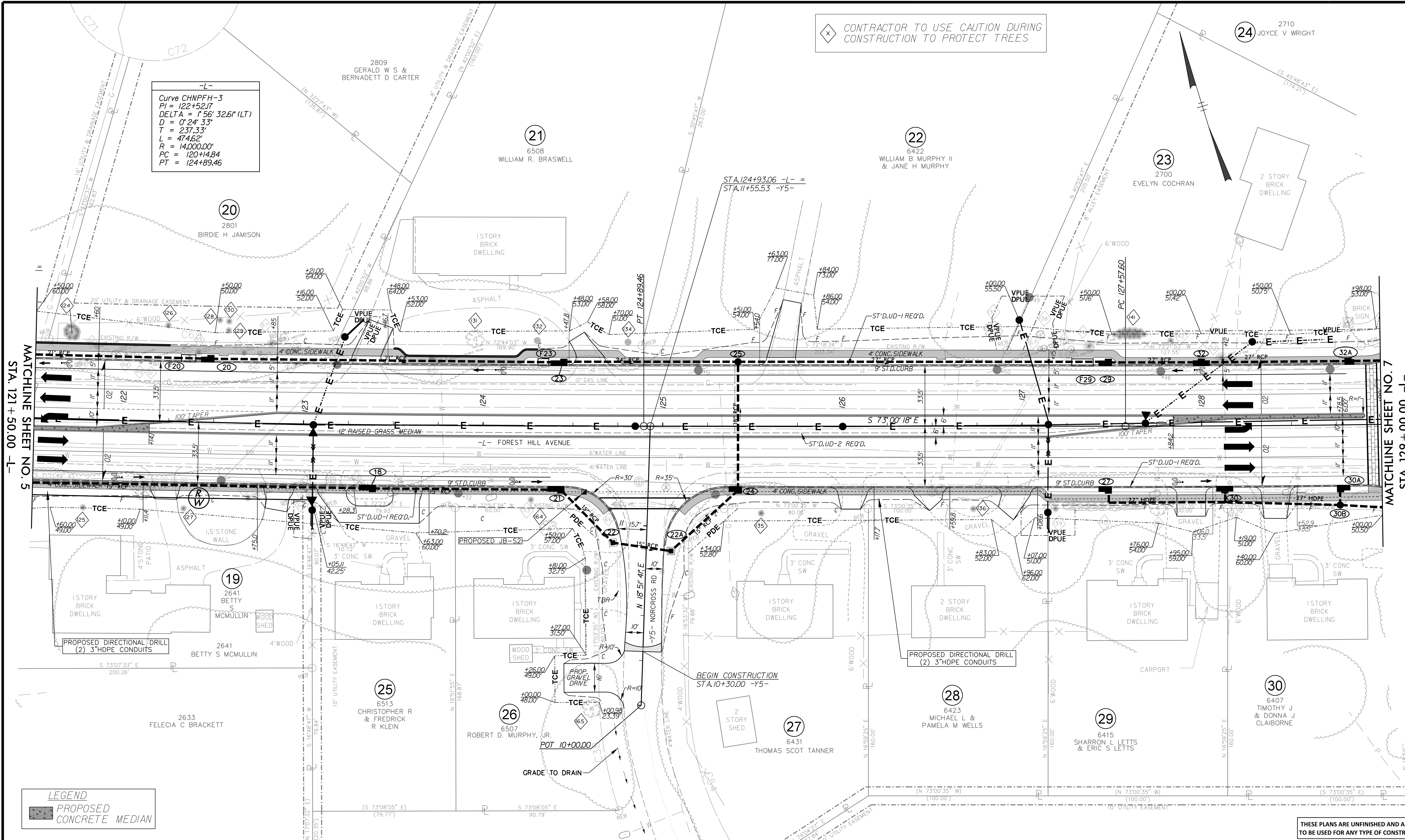
Technical	Administrative
Surveys Superintendent	
Project Engineer	Capital Project Administrator
Maintenance Engineer	Deputy Director for Transportation / Public Works
City Traffic Engineer	Director of Public Works

DEPARTMENT OF PUBLIC WORKS
RICHMOND, VIRGINIA

DRAWING #: 0-28520 CIP #: 040-291-8950	DESIGN BY: _____ DRAWN BY: _____ CHECKED BY: _____	REVIEWED BY: _____	FIELD NOTES	SCALE: HORIZ. 1"=25' VERT. 1"=25'	DATE: 12/13/2016	DRAWING FILE NAME: 171000608_rdy_psh_5.dgn	SHEET NO. 5
---	--	--------------------	-------------	---	------------------	--	-------------

CONTRACTOR TO USE CAUTION DURING CONSTRUCTION TO PROTECT TREES

Curve CHNPFH-3
 PI = 122+52.17
 DELTA = 1°56' 32.6" (LT)
 D = 0° 24' 33"
 T = 237.33'
 L = 474.62'
 R = 14,000.00'
 PC = 120+14.84
 PT = 124+89.46



MATCHLINE SHEET NO. 5
 STA. 121 + 50.00 -L-

MATCHLINE SHEET NO. 7
 STA. 129 + 00.00 -L-

LEGEND
 PROPOSED CONCRETE MEDIAN

THESE PLANS ARE UNFINISHED AND ARE NOT TO BE USED FOR ANY TYPE OF CONSTRUCTION

FOREST HILL AVENUE IMPROVEMENT PROJECT



Technical		Administrative	
Surveys Superintendent		Capital Project Administrator	
Project Engineer		Deputy Director for Transportation / Public Works	
Maintenance Engineer		Director of Public Works	
City Traffic Engineer			

DEPARTMENT OF PUBLIC WORKS
 RICHMOND, VIRGINIA

PLAN VIEW

DRAWING #: 0-28520	DESIGN BY: _____	REVIEWED BY: _____	FIELD NOTES	SCALE: HORIZ. 1"=25'	DATE: 12/13/2016	DRAWING FILE NAME: 171000608_rdy_psh_6.dgn	SHEET NO. 6
CIP #: 040-291-8950	CHECKED BY: _____			VERT. 1"=25'			

8/FILES

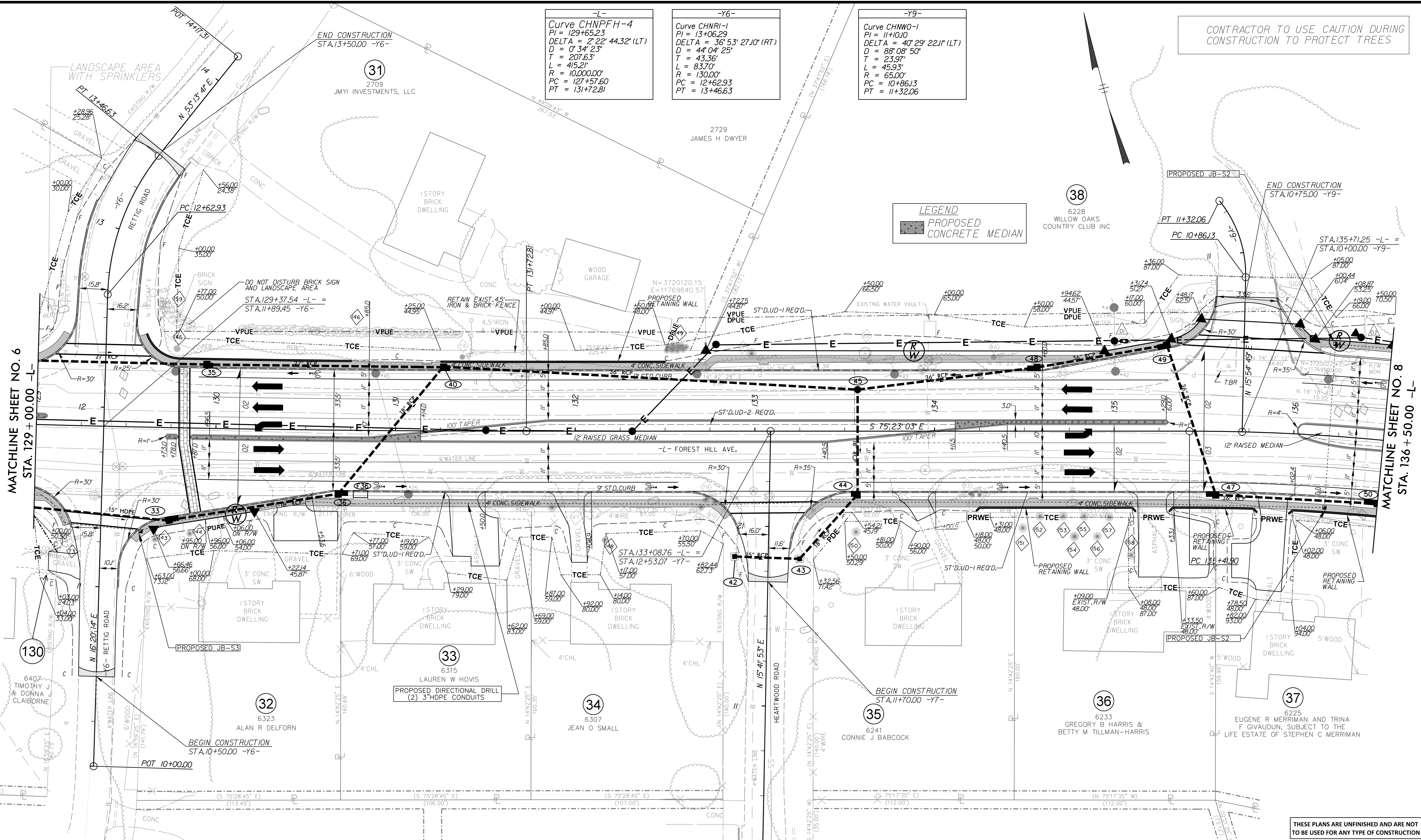
CONTRACTOR TO USE CAUTION DURING CONSTRUCTION TO PROTECT TREES

-L-
Curve CHNPFH-4
PI = 129+65.23
DELTA = 2° 22' 44.32" (LT)
D = 0° 34' 23"
T = 207.63'
L = 415.21'
R = 10,000.00'
PC = 127+57.60
PT = 131+72.81

-Y6-
Curve CHNRI-1
PI = 13+06.29
DELTA = 36° 53' 27.10" (RT)
D = 44° 04' 25"
T = 43.36'
L = 83.70'
R = 130.00'
PC = 12+62.93
PT = 13+46.63

-Y9-
Curve CHNWO-1
PI = 11+10.10
DELTA = 40° 29' 22.11" (LT)
D = 88° 08' 50"
T = 23.97'
L = 45.93'
R = 65.00'
PC = 10+86.13
PT = 11+32.06

LEGEND
PROPOSED CONCRETE MEDIAN



MATCHLINE SHEET NO. 6
STA. 129+00.00 -L-

MATCHLINE SHEET NO. 8
STA. 136+50.00 -L-

FOREST HILL AVENUE IMPROVEMENT PROJECT



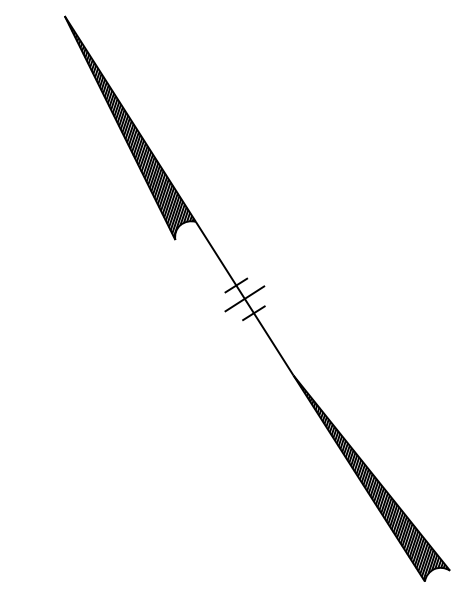
Technical		Administrative	
Surveys Superintendent		Capital Project Administrator	
Project Engineer		Deputy Director for Transportation / Public Works	
Maintenance Engineer		Director of Public Works	
City Traffic Engineer			

DEPARTMENT OF PUBLIC WORKS
RICHMOND, VIRGINIA

PLAN VIEW

DRAWING #: 0-28520 CIP #: 040-291-8950	DESIGN BY: _____ CHECKED BY: _____	REVIEWED BY: _____	FIELD NOTES	SCALE: HORIZ. 1"=25' VERT. 1"=25'	DATE: 12/13/2016	DRAWING FILE NAME: 171000608_rdy_psh_7.dgn	SHEET NO. 7
---	---------------------------------------	--------------------	-------------	---	---------------------	---	----------------

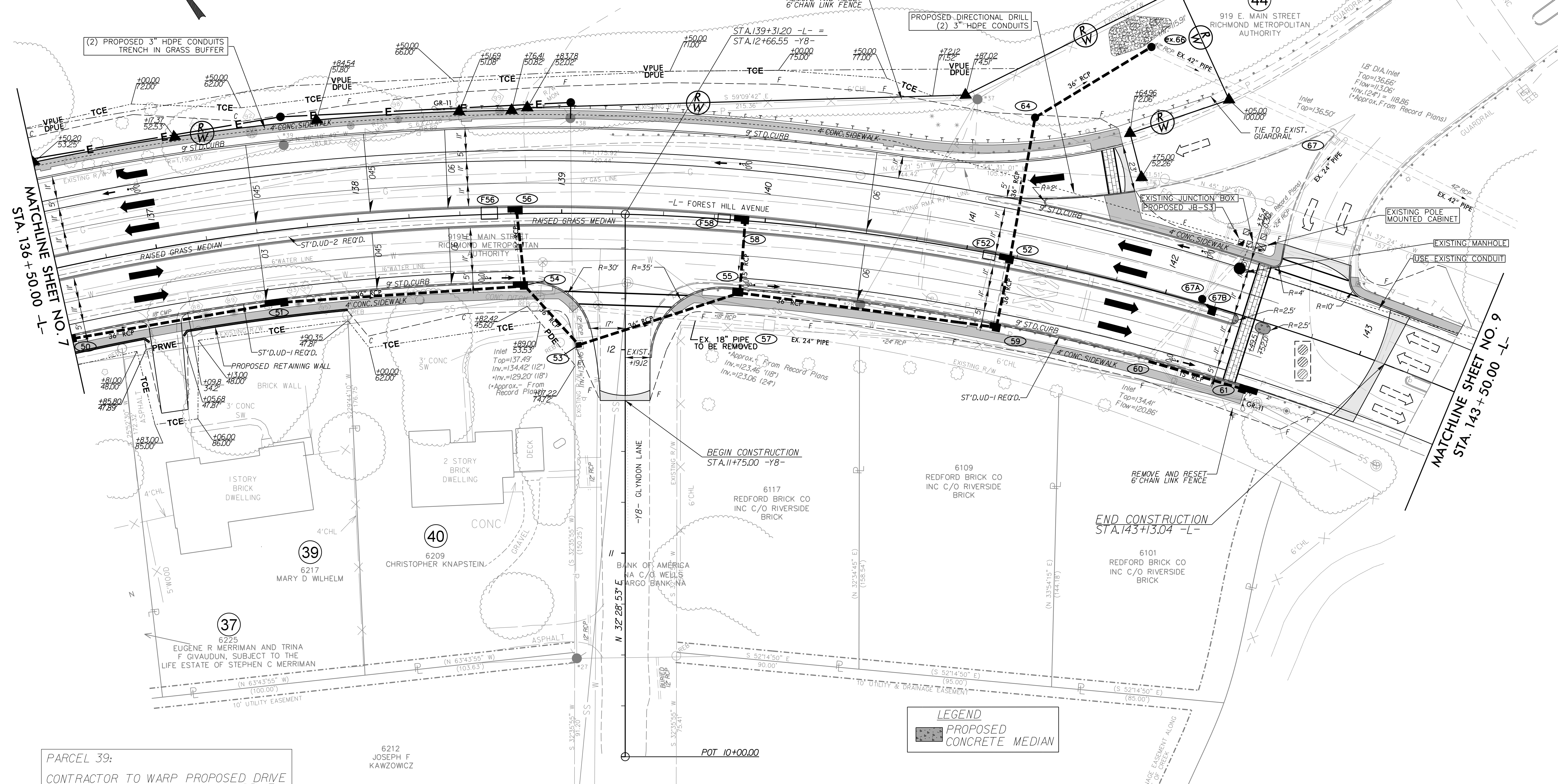
THESE PLANS ARE UNFINISHED AND ARE NOT TO BE USED FOR ANY TYPE OF CONSTRUCTION



38

6228
WILLOW OAKS
COUNTRY CLUB INC

-L-
Curve CHNPFH-5
PI = 140+51.03
DELTA = 47° 56' 41.96" (RT)
D = 5' 00" 14"
T = 509.13'
L = 958.13'
R = 145.00'
PC = 135+41.90
PT = 145+00.04



MATCHLINE SHEET NO. 7
STA. 136 + 50.00 -L-

MATCHLINE SHEET NO. 9
STA. 143 + 50.00 -L-

PARCEL 39:
CONTRACTOR TO WARP PROPOSED DRIVE
TO TIE INTO EXISTING ASPHALT DRIVE

6212
JOSEPH F
KAWZOWICZ

LEGEND
PROPOSED
CONCRETE MEDIAN

THESE PLANS ARE UNFINISHED AND ARE NOT
TO BE USED FOR ANY TYPE OF CONSTRUCTION

FOREST HILL AVENUE IMPROVEMENT PROJECT



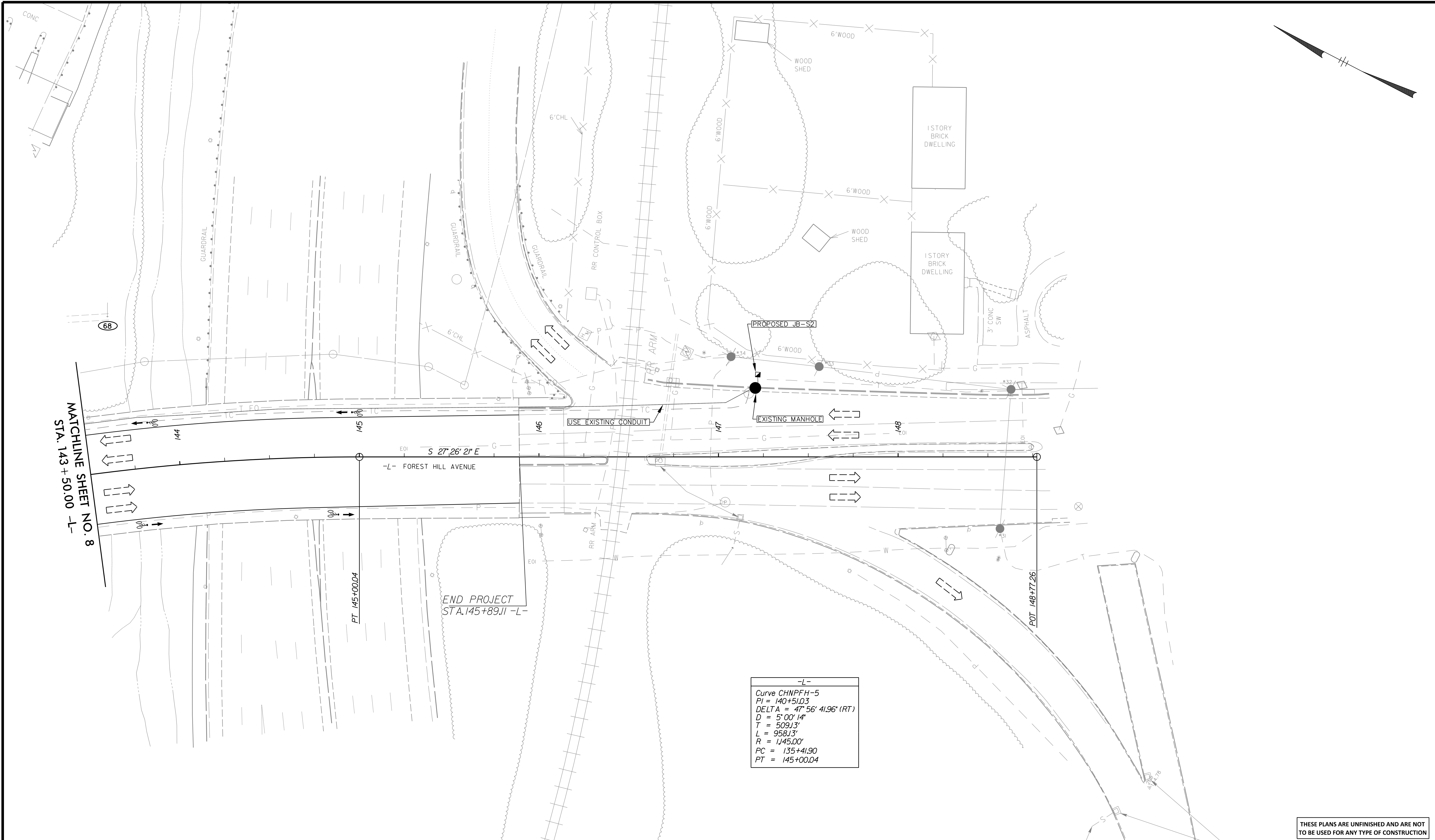
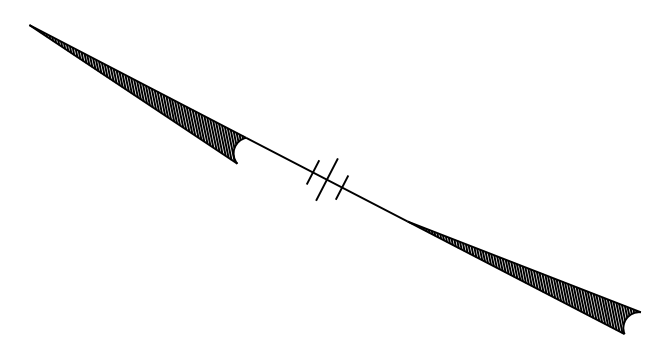
Technical		Administrative	
Surveys Superintendent		Capital Project Administrator	
Project Engineer		Deputy Director for Transportation / Public Works	
Maintenance Engineer		Director of Public Works	
City Traffic Engineer			

DEPARTMENT OF PUBLIC WORKS
RICHMOND, VIRGINIA

PLAN VIEW

DRAWING #: 0-28520	DESIGN BY: _____	REVIEWED BY: _____	FIELD NOTES	SCALE: HORIZ. 1"=25'	DATE: 12/13/2016	DRAWING FILE NAME: 171000608_rdy_psh_8.dgn	SHEET NO. 8
CIP #: 040-291-8950	CHECKED BY: _____			VERT. 1"=25'			

8/FILES



-L-
 Curve CHNPFH-5
 PI = 140+51.03
 DELTA = 47° 56' 41.96" (RT)
 D = 5' 00" 14"
 T = 509.13'
 L = 958.13'
 R = 1,145.00'
 PC = 135+41.90
 PT = 145+00.04

THESE PLANS ARE UNFINISHED AND ARE NOT TO BE USED FOR ANY TYPE OF CONSTRUCTION

FOREST HILL AVENUE IMPROVEMENT PROJECT



Technical	Administrative
Surveys Superintendent	
Project Engineer	Capital Project Administrator
Maintenance Engineer	Deputy Director for Transportation / Public Works
City Traffic Engineer	Director of Public Works

DEPARTMENT OF PUBLIC WORKS
 RICHMOND, VIRGINIA

PLAN VIEW

DRAWING #: 0-28520 CIP #: 040-291-8950	DESIGN BY: _____	REVIEWED BY: _____	FIELD NOTES	SCALE: HORIZ. 1"=25' VERT. 1"=25'	DATE: 12/13/2016	DRAWING FILE NAME: 171000608_rdy_psh_9.dgn	SHEET NO. 9
---	------------------	--------------------	-------------	---	---------------------	---	----------------

8 FILES