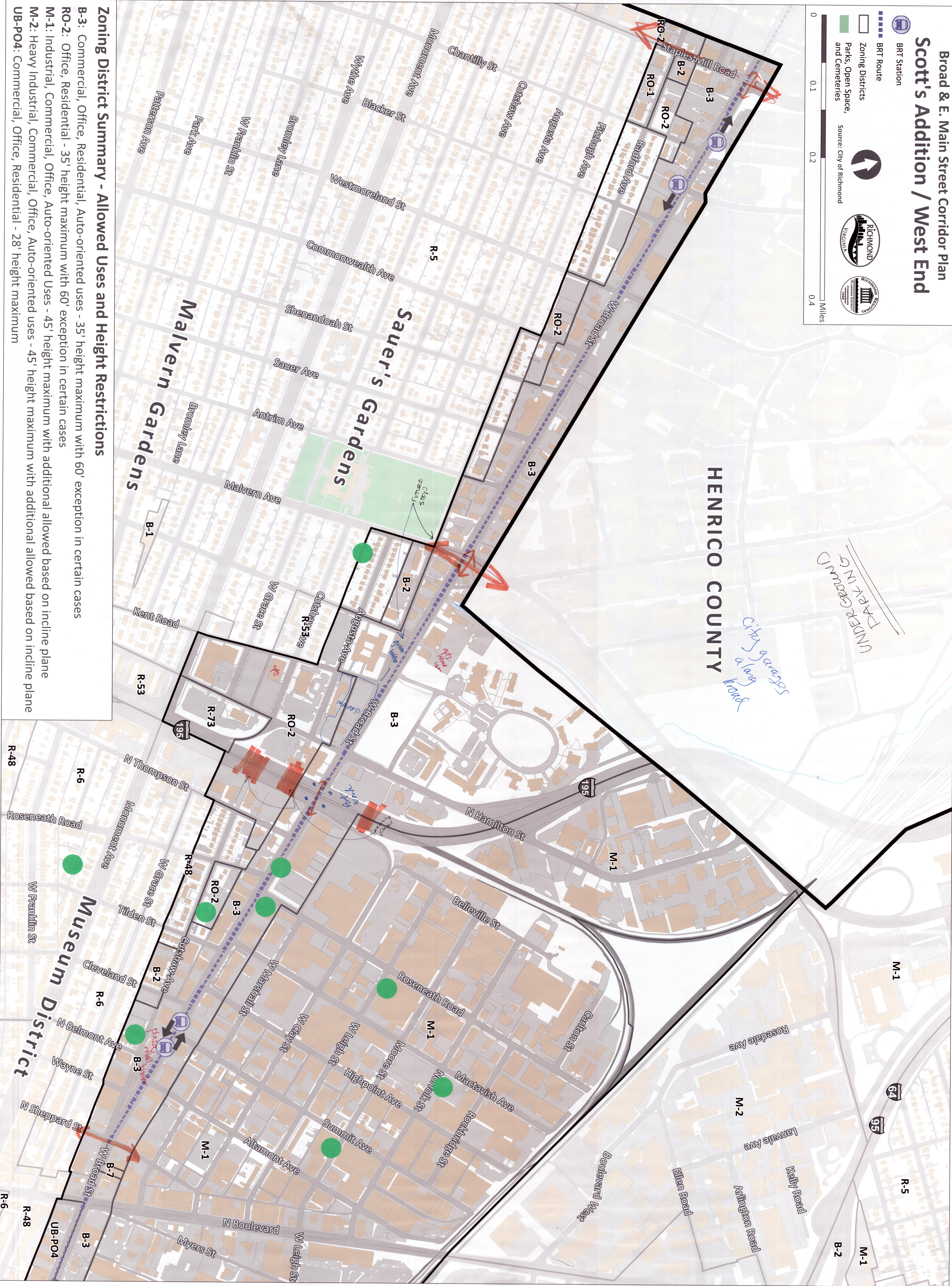


Broad & E. Main Street Corridor Plan Scott's Addition / West End

- BRT Station
- BRT Route
- Zoning Districts
- Parks, Open Space, and Cemeteries

Source: City of Richmond

0 0.1 0.2 0.4 Miles



Zoning District Summary - Allowed Uses and Height Restrictions

- B-3: Commercial, Office, Residential, Auto-oriented uses - 35' height maximum with 60' exception in certain cases
- RO-2: Office, Residential - 35' height maximum with 60' exception in certain cases
- M-1: Industrial, Commercial, Office, Auto-oriented Uses - 45' height maximum with additional allowed based on incline plane
- M-2: Heavy Industrial, Commercial, Office, Auto-oriented uses - 45' height maximum with additional allowed based on incline plane
- UB-PO4: Commercial, Office, Residential - 28' height maximum