

CITY OF RICHMOND, VIRGINIA

DEPARTMENT OF PUBLIC WORKS

TRANSPORTATION ENGINEERING DIVISION



Bike Infrastructure / Roadway Conversion Project

Moore Street Bike Lanes

Belleville Street To N Arthur Ashe Boulevard

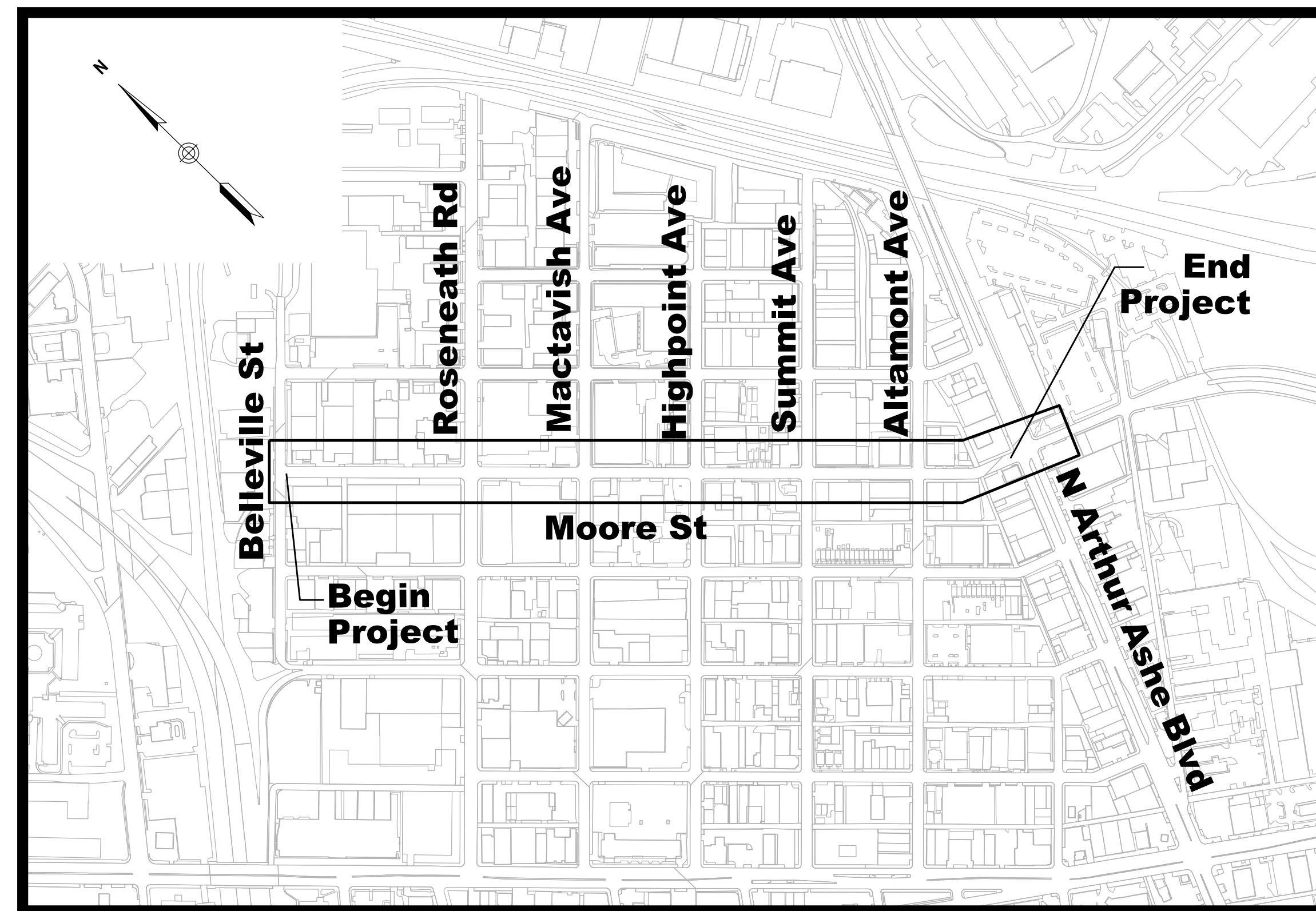
VHB, Inc
Richmond, Virginia
PROFESSIONAL ENGINEER

CITY OF RICHMOND
APPROVED FOR CONSTRUCTION

DATE	SURVEYS SUPERINTENDENT
DATE	PROJECT MANAGER
DATE	MAINTENANCE ENGINEER
DATE	CITY TRANSPORTATION ENGINEER
DATE	CAPITAL PROJECTS ADMINISTRATOR
DATE	CITY ENGINEER
DATE	DIRECTOR OF PUBLIC WORKS

INDEX OF SHEETS	
Sheet Title	Sheet No.
TITLE SHEET & INDEX OF SHEETS	1
GENERAL NOTES	1A
DETAILS	1B
EXISTING CONDITIONS PLAN	2-4
PROPOSED SIGNAGE AND STRIPING PLAN	5-7

- NOTES:
- ALL WORK IS WITHIN THE EXISTING RIGHT OF WAY.
 - DESIGN FEATURES RELATING TO CONSTRUCTION OR TO REGULATION AND CONTROL OF TRAFFIC MAY BE SUBJECT TO CHANGE AS DEEMED NECESSARY BY THE CITY OF RICHMOND.
 - THIS PROJECT IS TO BE CONSTRUCTED IN ACCORDANCE WITH THE 2020 VDOT ROAD AND BRIDGE SPECIFICATIONS, 2016 VDOT ROAD AND BRIDGE STANDARDS, 2009 FHWA MANUAL ON UNIFORM TRAFFIC CONTROL DEVICES (MUTCD), 2011 VIRGINIA SUPPLEMENT TO THE MUTCD (REVISION 1), 2011 VIRGINIA WORK AREA PROTECTION MANUAL (REVISION 2), APPLICABLE CITY OF RICHMOND STANDARDS AND SPECIFICATIONS, AND AS AMENDED BY CONTRACT PROVISIONS AND THE COMPLETE ELECTRONIC VERSION OF THE PLAN ASSEMBLY.
 - PROJECT BASE MAPPING WAS OBTAINED FROM THE CITY OF RICHMOND GIS WEBSITE AND WAS NOT FIELD SURVEYED TO VERIFY ACCURACY. CONTRACTOR SHALL FIELD VERIFY WIDTHS PRIOR TO INSTALLATION OF PROPOSED PAVEMENT MARKINGS.



CITY OF RICHMOND
DEPT. OF PUBLIC WORKS
RICHMOND, VA

LOCATION MAP
NTS
August 2022

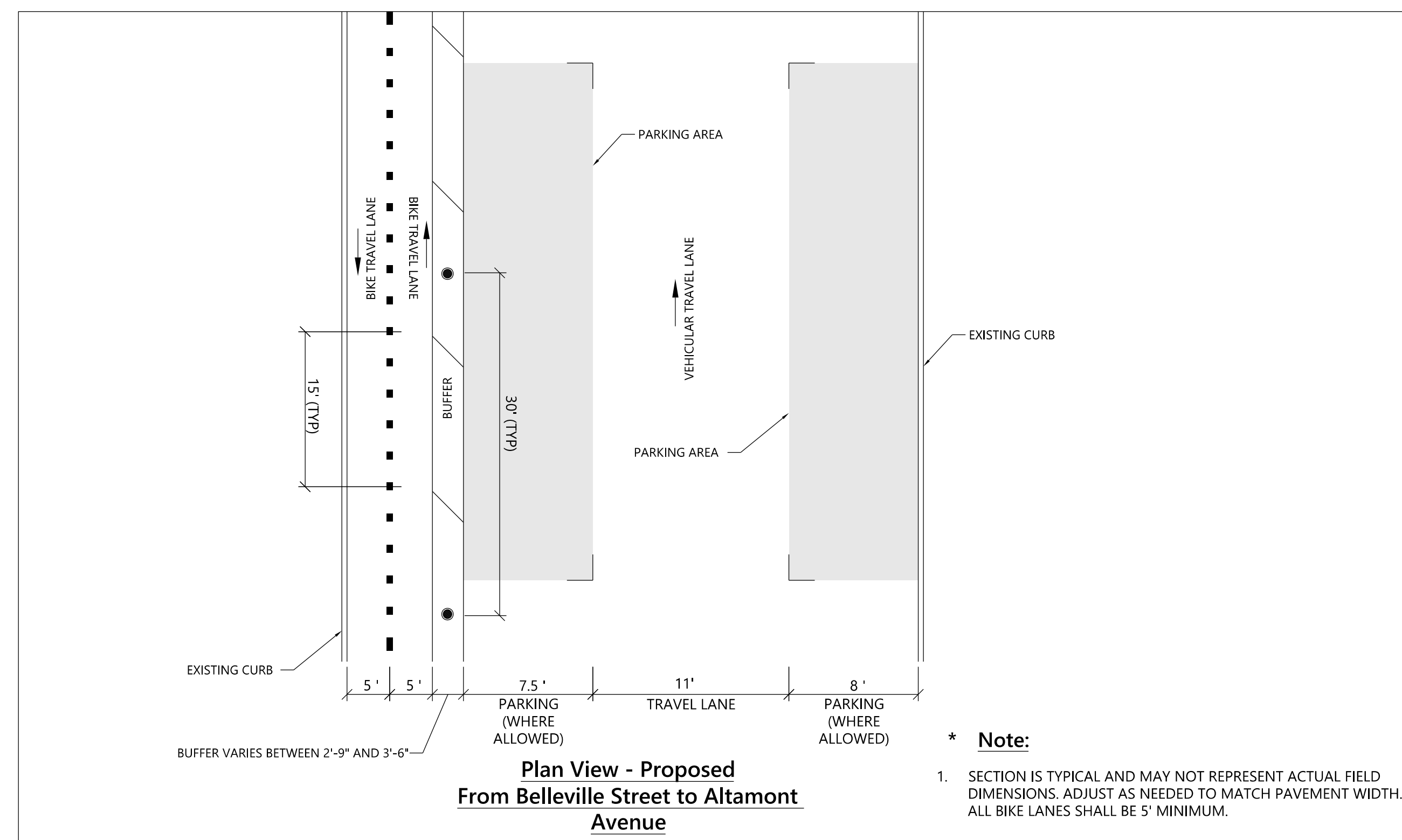
REVISIONS

NO.	DATE	COMMENTS





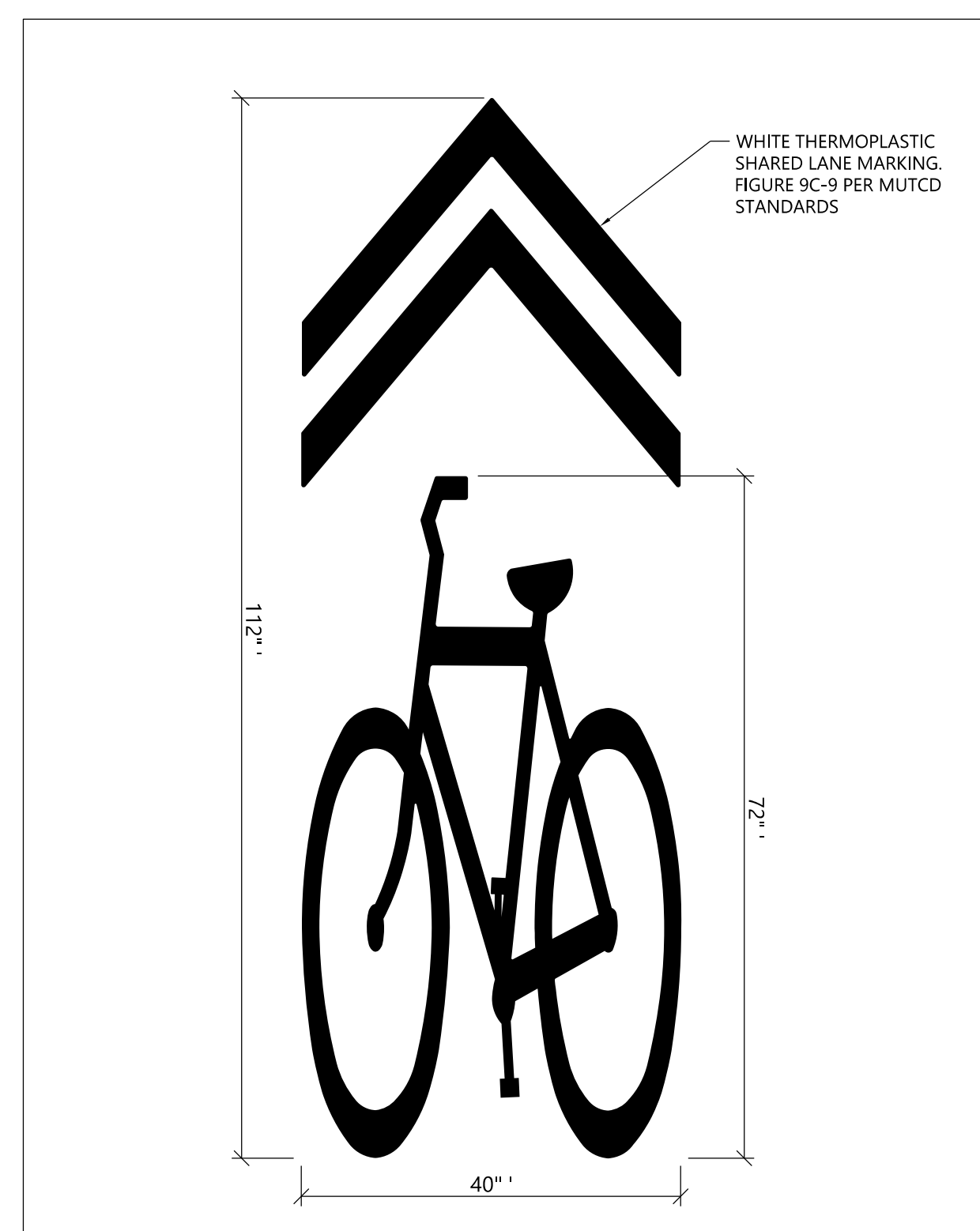
115 South 15th Street
Suite 200
Richmond, VA 23219
804.343.7100



Typical Roadway Dimensions and Section A

N.T.S.

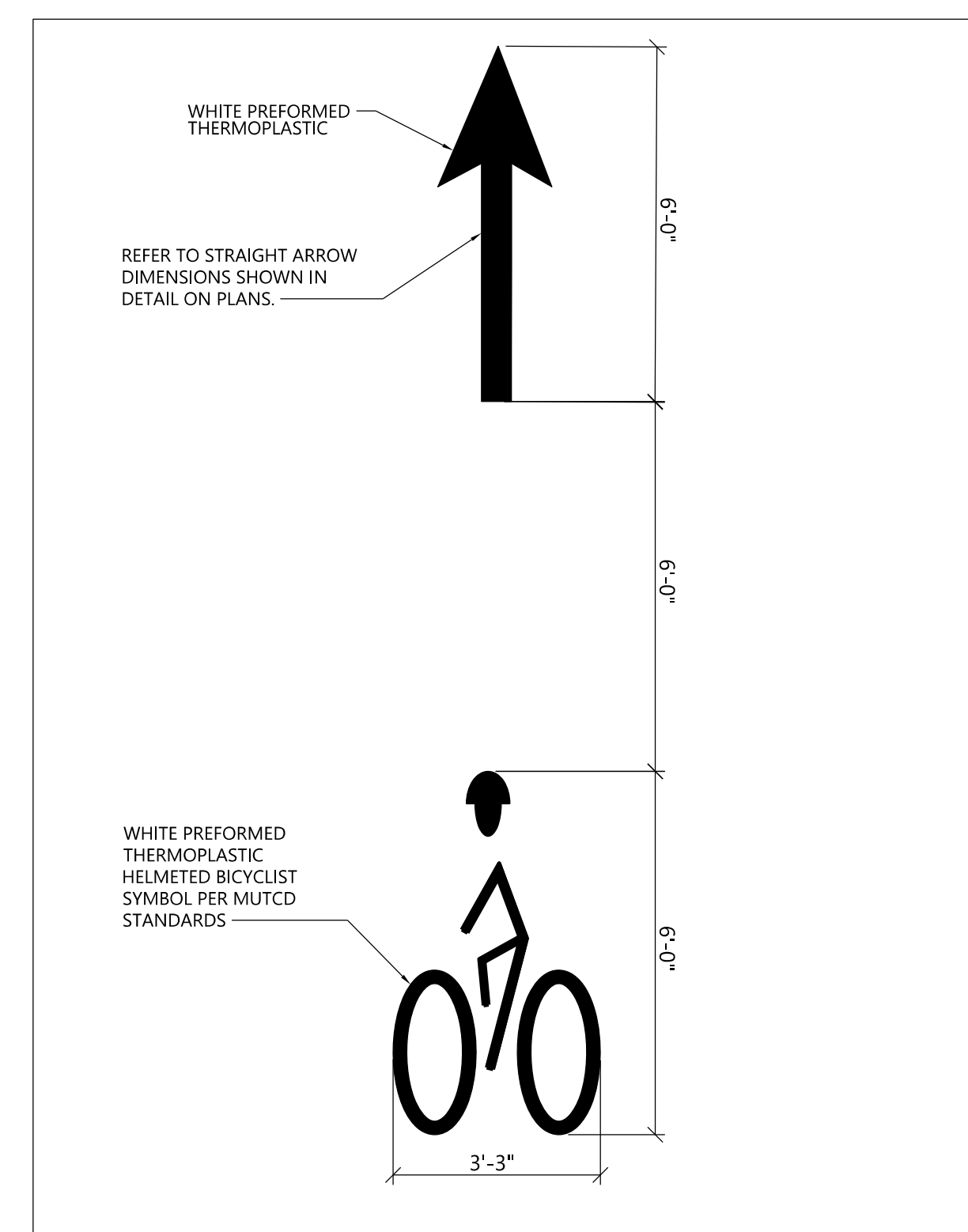
Source: VHB



Shared Lane Marking

N.T.S.

Source: VHB



Helmeted Bicyclist and Arrow

N.T.S.

Source: VHB

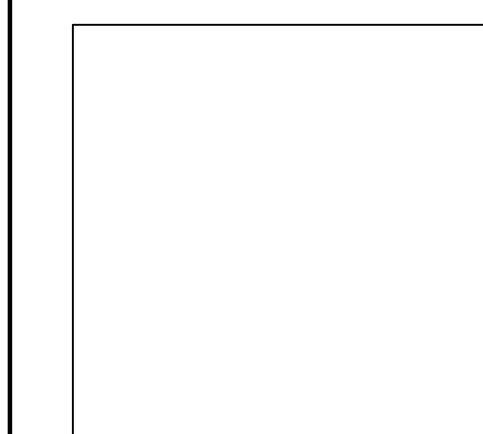
Bike Infrastructure / Roadway Conversion Project
Moore St
Richmond, Virginia

No.	Revision	Date	Appvd.

Designed by **AFD** Checked by **JLB**

Issued for **Detailed Design** Date **August 2022**

Drawing Title
Details



VHB, Inc.
Richmond, Virginia
PROFESSIONAL ENGINEER

PROJECT
34965.26

SHEET NO.
1B

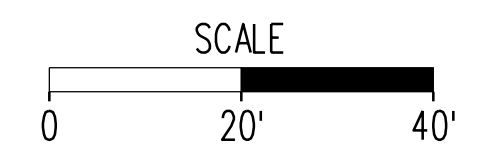


115 South 15th Street
Suite 200
Richmond, VA 23219
804.343.7100

**Bike Infrastructure /
Roadway Conversion Project**
Moore St
Richmond, Virginia

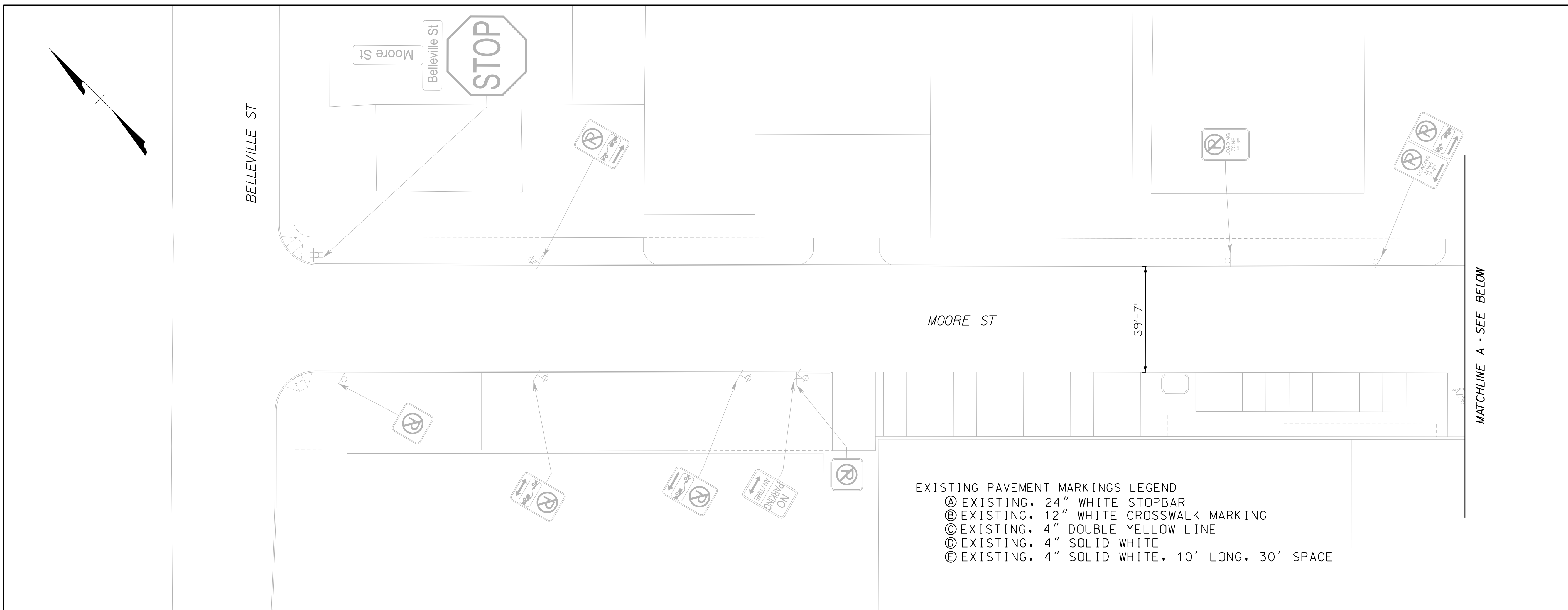
No.	Revision	Date	Appvd.

Designed by	AFD	Checked by	JLB
Issued for	Detailed Design	Date	August 2022

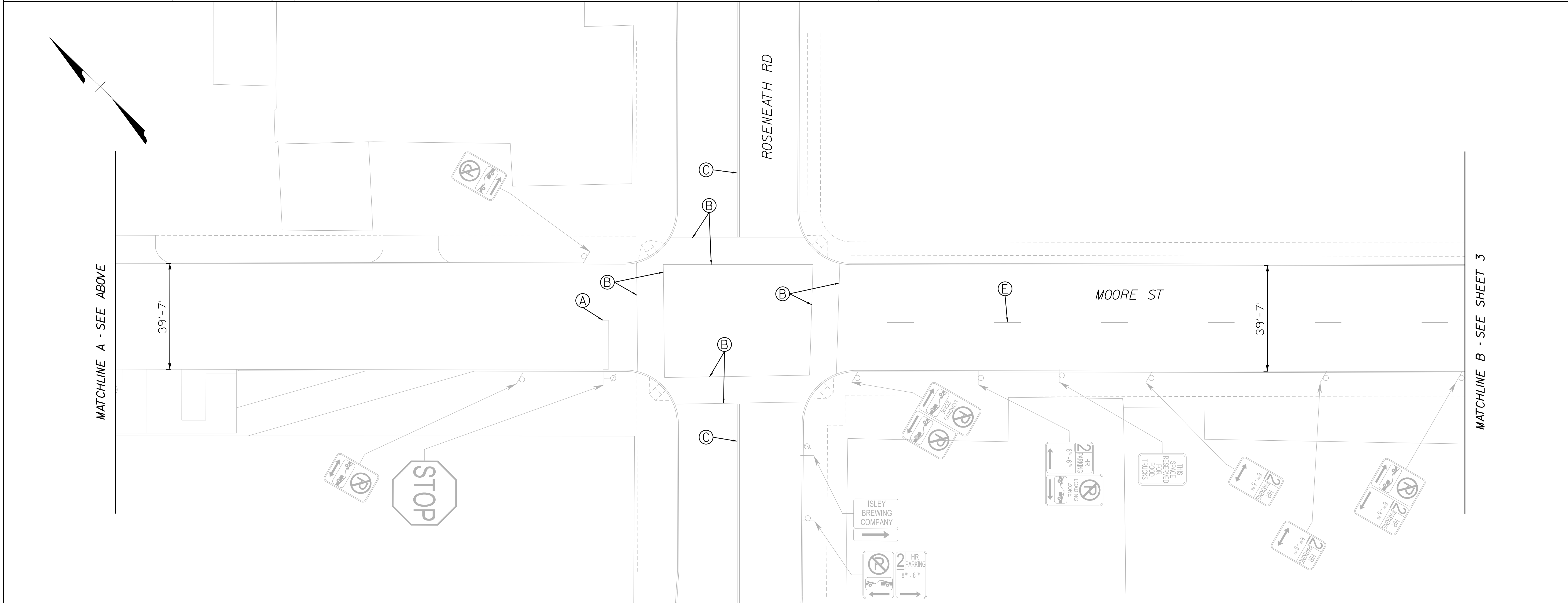


Drawing Title
Existing Conditions

VHB, Inc Richmond, Virginia PROFESSIONAL ENGINEER	PROJECT 34965.26	SHEET NO. 2
---	----------------------------	-----------------------



EXISTING PAVEMENT MARKINGS LEGEND
 Ⓐ EXISTING, 24" WHITE STOPBAR
 Ⓑ EXISTING, 12" WHITE CROSSWALK MARKING
 Ⓒ EXISTING, 4" DOUBLE YELLOW LINE
 Ⓓ EXISTING, 4" SOLID WHITE
 Ⓔ EXISTING, 4" SOLID WHITE, 10' LONG, 30' SPACE



8/15/2022
3:29:01 PM

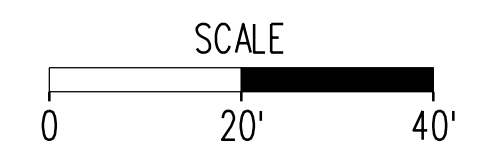


115 South 15th Street
Suite 200
Richmond, VA 23219
804.343.7100

**Bike Infrastructure /
Roadway Conversion Project**
Moore St
Richmond, Virginia

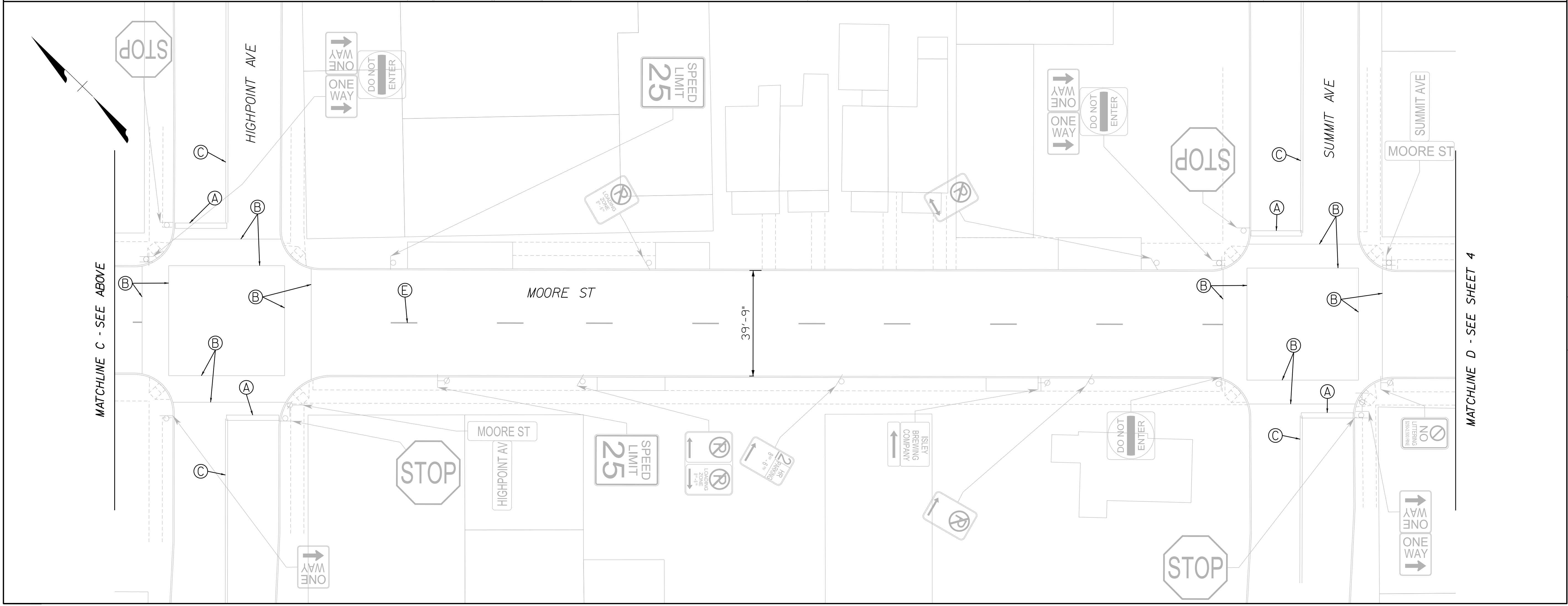
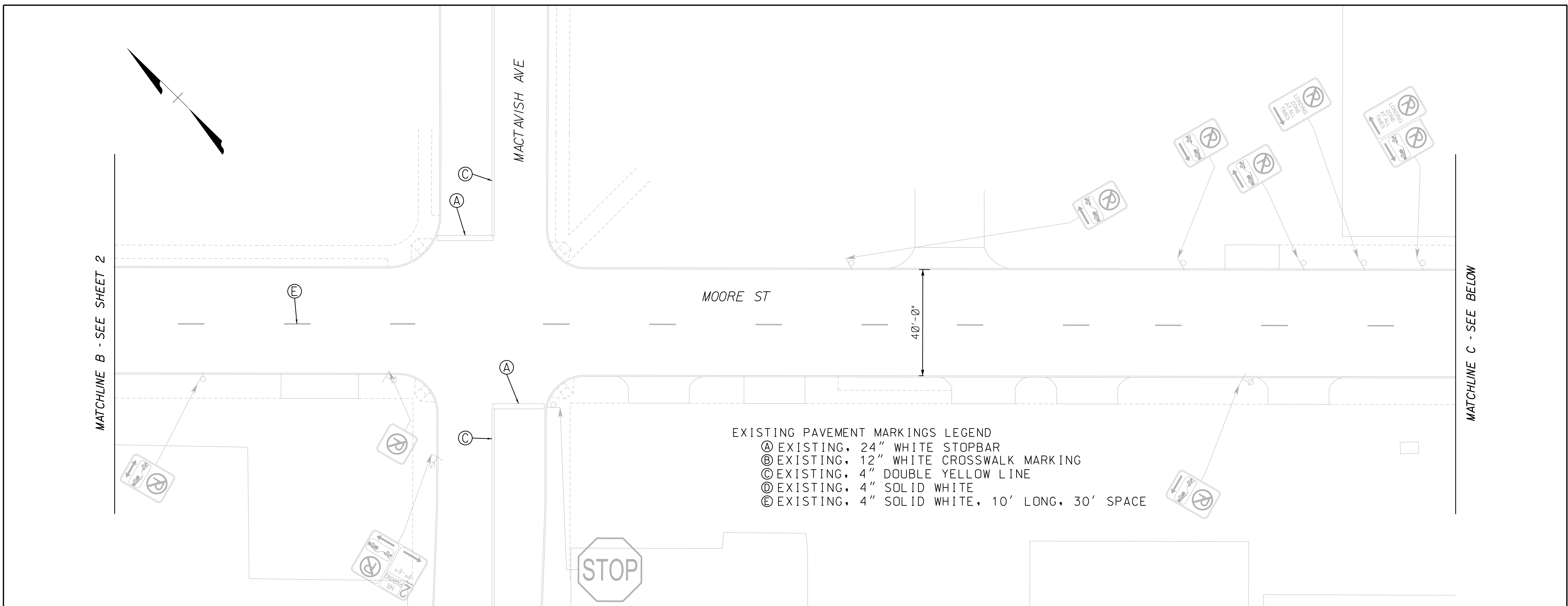
No.	Revision	Date	Apprv.

Designed by: AFD Checked by: JLB
Issued for: Detailed Design Date: August 2022



Drawing Title
Existing Conditions

VHB, Inc Richmond, Virginia PROFESSIONAL ENGINEER	PROJECT 34965.26	SHEET NO. 3
---	----------------------------	-----------------------



8/15/2022
3:29:06 PM

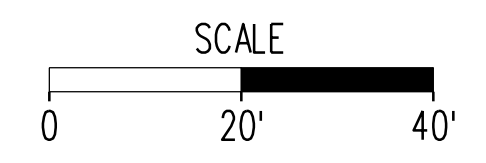


115 South 15th Street
Suite 200
Richmond, VA 23219
804.343.7100

**Bike Infrastructure /
Roadway Conversion Project**
Moore St
Richmond, Virginia

No.	Revision	Date	Apprv.

Designed by **AFD** Checked by **JLB**
Issued for **Detailed Design** Date **August 2022**



Drawing Title
Existing Conditions

VHB, Inc Richmond, Virginia PROFESSIONAL ENGINEER	PROJECT 34965.26	SHEET NO. 4
---	----------------------------	-----------------------



- EXISTING PAVEMENT MARKINGS LEGEND**
- Ⓐ EXISTING, 24" WHITE STOPBAR
 - Ⓑ EXISTING, 12" WHITE CROSSWALK MARKING
 - Ⓒ EXISTING, 4" DOUBLE YELLOW LINE
 - Ⓓ EXISTING, 4" SOLID WHITE
 - Ⓔ EXISTING, 4" SOLID WHITE, 10' LONG, 30' SPACE

8/15/2022
3:29:10 PM



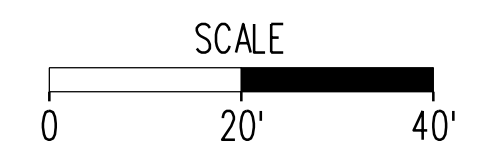
115 South 15th Street
Suite 200
Richmond, VA 23219
804.343.7100

Bike Infrastructure / Roadway Conversion Project

Moore St
Richmond, Virginia

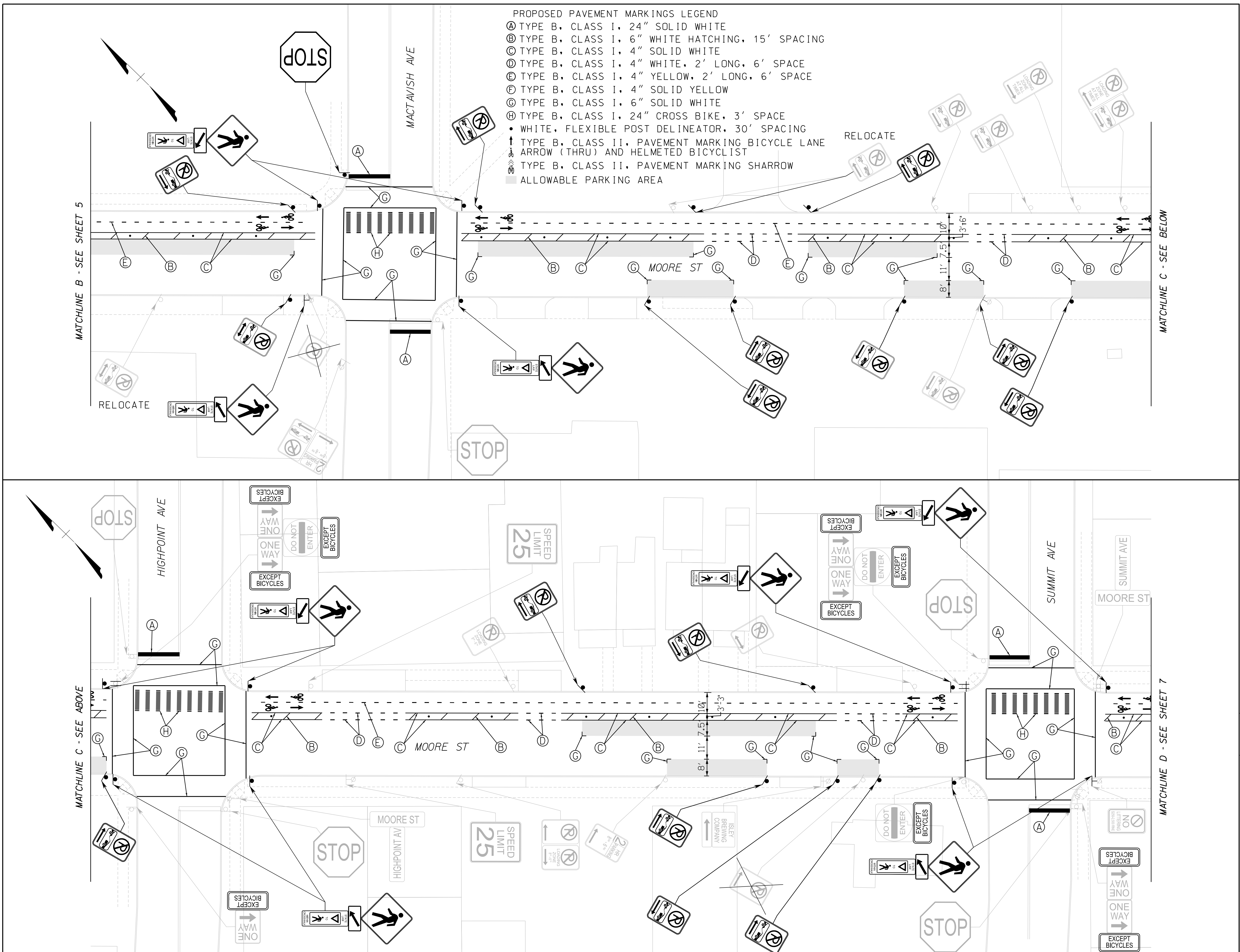
No.	Revision	Date	Apprv.

Designed by: AFD Checked by: JLB
 Issued for: Detailed Design Date: August 2022



Drawing Title
Proposed Conditions

- PROPOSED PAVEMENT MARKINGS LEGEND
- Ⓐ TYPE B, CLASS I, 24" SOLID WHITE
 - Ⓑ TYPE B, CLASS I, 6" WHITE HATCHING, 15' SPACING
 - Ⓒ TYPE B, CLASS I, 4" SOLID WHITE
 - Ⓓ TYPE B, CLASS I, 4" WHITE, 2' LONG, 6' SPACE
 - Ⓔ TYPE B, CLASS I, 4" YELLOW, 2' LONG, 6' SPACE
 - Ⓕ TYPE B, CLASS I, 4" SOLID YELLOW
 - Ⓖ TYPE B, CLASS I, 6" SOLID WHITE
 - Ⓜ TYPE B, CLASS I, 24" CROSS BIKE, 3' SPACE
 - WHITE, FLEXIBLE POST DELINEATOR, 30' SPACING
 - ↑ TYPE B, CLASS II, PAVEMENT MARKING BICYCLE LANE ARROW (THRU) AND HELMETED BICYCLIST
 - ↔ TYPE B, CLASS II, PAVEMENT MARKING SHARROW
 - ALLOWABLE PARKING AREA

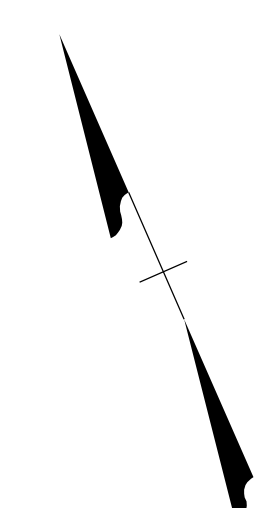
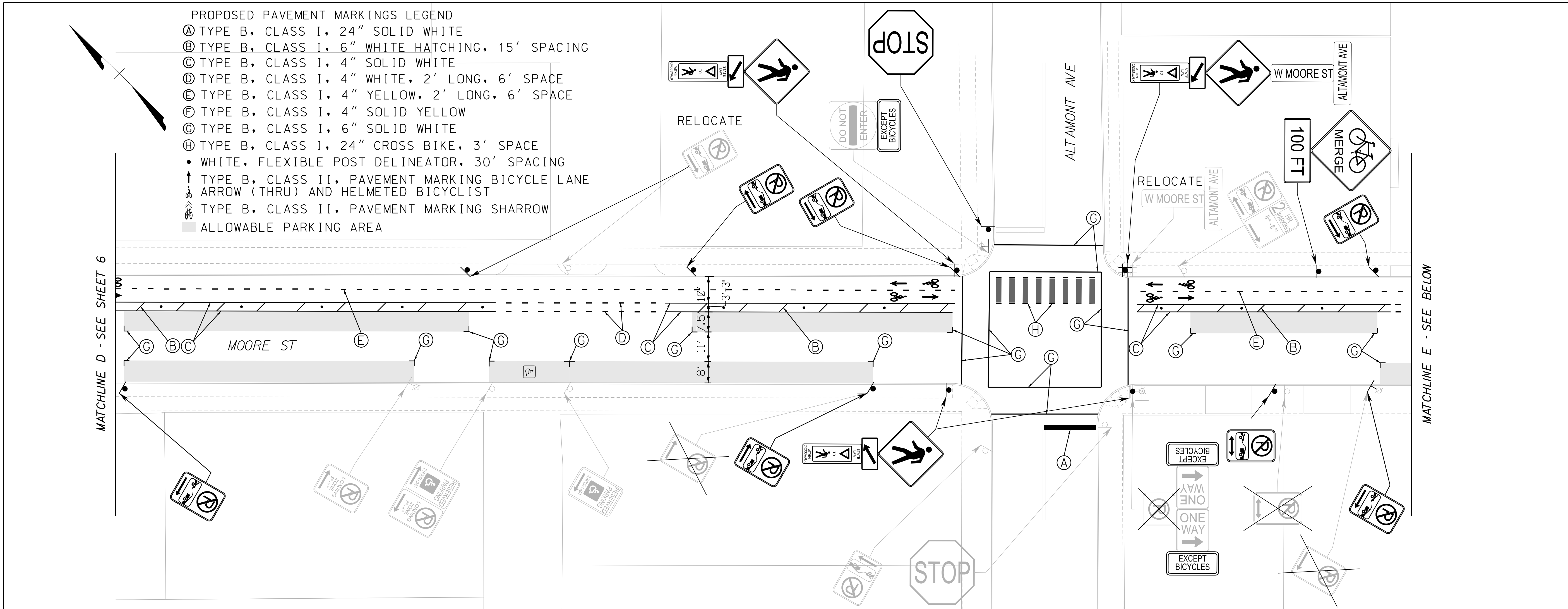


8/15/2022
3:29:21 PM

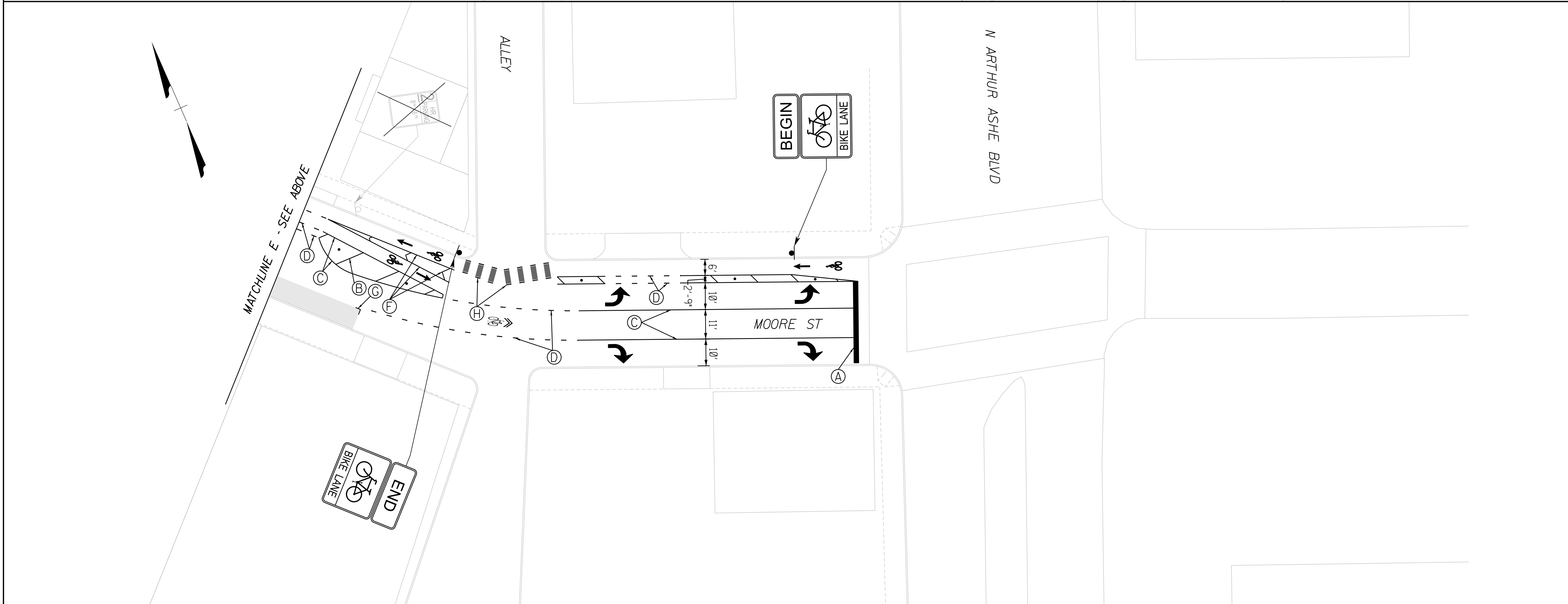
- PROPOSED PAVEMENT MARKINGS LEGEND
- Ⓐ TYPE B, CLASS I, 24" SOLID WHITE
 - Ⓑ TYPE B, CLASS I, 6" WHITE HATCHING, 15' SPACING
 - Ⓒ TYPE B, CLASS I, 4" SOLID WHITE
 - Ⓓ TYPE B, CLASS I, 4" WHITE, 2' LONG, 6' SPACE
 - Ⓔ TYPE B, CLASS I, 4" YELLOW, 2' LONG, 6' SPACE
 - Ⓕ TYPE B, CLASS I, 4" SOLID YELLOW
 - Ⓖ TYPE B, CLASS I, 6" SOLID WHITE
 - Ⓗ TYPE B, CLASS I, 24" CROSS BIKE, 3' SPACE
 - WHITE, FLEXIBLE POST DELINEATOR, 30' SPACING
 - ↑ TYPE B, CLASS II, PAVEMENT MARKING BICYCLE LANE
 - ↗ ARROW (THRU) AND HELMETED BICYCLIST
 - ↘ TYPE B, CLASS II, PAVEMENT MARKING SHARROW
 - ALLOWABLE PARKING AREA

MATCHLINE D - SEE SHEET 6

MATCHLINE E - SEE BELOW



MATCHLINE E - SEE ABOVE

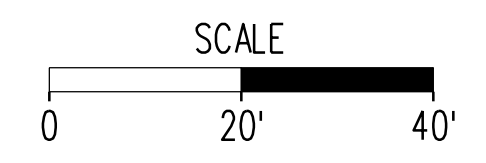


115 South 15th Street
Suite 200
Richmond, VA 23219
804.343.7100

Bike Infrastructure / Roadway Conversion Project
Moore St
Richmond, Virginia

No.	Revision	Date	Appvd.

Designed by: AFD Checked by: JLB
Issued for: Detailed Design Date: August 2022



Drawing Title
Proposed Conditions

VHB, Inc Richmond, Virginia PROFESSIONAL ENGINEER	PROJECT 34965.26	SHEET NO. 7
---	----------------------------	-----------------------

8/15/2022
3:29:25 PM